

2026 EISM HANDBOOK



WEBSITE
WWW.EISM.AU

EXECUTIVE OFFICER
MS MARISSA FILLIPOU

SOCIAL MEDIA
@EISMSPORT



PRESIDENT
MR BRAD FRY



2026 OFFICE BEARERS

EXECUTIVE COMMITTEE:

PRESIDENT	Mr Brad Fry Tintern Grammar
VICE-PRESIDENT	Dr Vivianne Nikou Alphington Grammar
TREASURER	Mr Hirian Hinson Kilvington Grammar School
SECRETARY	Mr Rob French Kilvington Grammar School
ORDINARY EXECUTIVE MEMBERS	Mrs Karen Jebb Emmaus College Mr Richard Lisle Eltham College
EXECUTIVE OFFICER:	Ms Marissa Fillipou

ACKNOWLEDGEMENTS

OFFICE FACILITIES	Emmaus College
ACCOUNTING SUPPORT	Mount Lilydale Mercy College

EISM OFFICE CONTACT DETAILS

EXECUTIVE OFFICER Marissa Fillipou 0409 859 144 mfillipou@eism.au	ACTING SPORT DELIVERY & PROMOTION OFFICER Emily O'Sullivan 0410 473 274 eosullivan@eism.au	SPORT EVENTS OFFICER Cara Bartlett 0414 346 260 cbartlett@eism.au	SPORT DELIVERY OFFICER <i>(Maternity Leave; Feb – Oct 2026)</i> Rachel Piper 0466 097 784 riper@eism.au
---	--	---	--

C/- Emmaus College – Burwood Campus
3-9 Central Avenue
Burwood 3125

CONTENTS

	Page
<u>EISM</u>	
President's Report	5
Regulations of the Association	6
Division Structure	9
Program Structure	11
History of the EISM	13
<u>PROGRAM</u>	
Inter Association Events	18
Awards	20
General Information	
– Handbook	22
– Disputes & Protests	22
– Venue and Risk Management	22
– Registration of Officials & Photographers	22
– Student Supervision	22
<u>POLICIES, ETHICS & BEHAVIOUR</u>	
EISM Policies	23
Code of Ethics & Behaviour	24
Sporting Code of Conduct	26
EISM Child Safety Code of Conduct	27
Guidelines for Cancellation of Weekly Sport & Association Events	
– Heat Out Policy	28
– Air Quality Policy	29
– Thunderstorm Asthma Policy	29
– Electrical Storms/Lightning Policy	29
– Unsafe Playing Conditions	29
<u>SAFETY CONSIDERATIONS</u>	
First Aid	30
<u>WEEKLY SPORT</u>	
Weekly Sports – Central Division 2026	31
Weekly Sports – North Eastern Division 2026	32
Weekly Sports – South Eastern Division 2026	33
Conduct of Weekly Sport	
– Team Entries	34
– General Uniform Regulations	35
– Minimum Match Durations	36
– Match Amendments	36
– Home Teams	36
– Away Teams & External Venues	36
– Venues Booked by EISM	37
– Forfeits	37

CONTENTS cont'd

	Page
WEEKLY SPORT cont'd	
Conduct of Weekly Sport cont'd	
– Process for Management of Forfeits.....	38
– Process for Management of Withdrawals.....	38
– Process for Management of No Play Dates.....	38
– Protocol for When a Suspected Ineligible Player Has Participated in EISM Sport.....	39
– Results	40
– Finals	40
Match Officials.....	42
Pre-Match Protocol	45
Match Regulations	
– 5-A-Side Soccer	46
– Badminton	47
– Basketball	48
– Football	49
– Hockey	50
– Hockey Modified	51
– Indoor Cricket	52
– Indoor Soccer.....	53
– Netball	54
– Soccer.....	55
– Softball.....	56
– Table Tennis.....	57
– Tennis.....	58
– Touch Football.....	59
– Twenty/20 Cricket.....	60
– Ultimate Frisbee.....	61
– Volleyball.....	62
ASSOCIATION EVENTS	
Conduct of Events	63
Event Regulations	
- Athletics	64
- Cross Country	68
- Swimming	69
Gala Days	
- Chess	72
- Golf	73
- Tennis	75
- 5-A-Side Soccer.....	76
APPENDICES	
I Hall of Fame	77
II Scoresheets.....	82
III Home Team Match Day Checklist	100
IV EISM Team Withdrawals.....	101

CONTENTS cont'd

	Page
APPENDICES cont'd	
V Member Schools	102
VI Heads of Sport	104
VII 2026 School Divisions.....	107
VIII Calendar 2026	108
IX Map of Member Schools	110

PRESIDENT'S REPORT

I am pleased to submit the Eastern Independent Schools of Melbourne (EISM) President's Report for the year 2025.

It has been a year of the Board and EISM staff working for consistency and continuity on the back of a period of change in governance and operational activity. This consolidation follows the work done over the last three years by the EISM Executive Officer, EISM staff, and the EISM Board to formalise our Conference Structures, Parameters of Membership and reimagine the association's commitment to eastern suburbs' sporting opportunities. We have come through this period as a healthier, more diverse, and more competitive association.

During 2025, the association has been living the experience that the changes in structure, procedures and expectations have created, along with working through the inevitable wrinkles that plague any large association that undergoes significant change. Overall, our association is more functional, more contemporary and the student experience richer; all good things for our 21 schools and their communities.

We are very grateful to our schools' Heads and Directors of Sport, the coaches of our teams, and our athletes for their hard work and commitment to the EISM program.

I want to take this opportunity to express my gratitude, and that of the association, to the Executive and the Board of EISM. The consistent and thoughtful work of the Executive: Vice President Viv Nikou, Secretary Tim Argall, Ordinary Members Jacqui Layfield and Rob French, and Treasurer Hirian Hinson has been much appreciated and ensures that our Board Meetings are well informed and proceed with a more strategic focus. Hirian as Treasurer has enabled us to maintain our strategic focus on finances which will support our long-term sustainability, and I thank him for his foresight and commitment to EISM.

I also thank Marissa Fillipou, Executive Officer, for all her work. Marissa is an energetic and proactive EO and has driven the evolution of EISM impressively since her commencement in the role. She has also retained a strong connection with the Heads and Directors of Sport, all Principals, and the students of EISM through her visits to schools and meetings with Principals and Directors of Sport over recent times. Her efforts have been instrumental in continuing the smooth functioning of EISM.

Rachel Piper, as Sport Delivery Officer, and Emily O'Sullivan, as Sport Administration and Compliance Officer have also been integral members of the team, assisting Marissa efficiently. Their work in assisting the direction of the Board, the Executive and Marissa as the EO has been committed and of an impressive standard and on the behalf of the association, I thank them both.

We wish Rachel our very best as she heads off on Parental Leave and look forward to her return when she feels the time is right. In the interim, we also look forward to Emily stepping up in her role and working with her in a full-time capacity in 2026.

In conclusion, we are very proud of EISM's achievements in the past year and grateful to everyone who has contributed to our success. We are committed to continue providing our students the best possible education and sporting opportunities and look forward to the future with optimism and enthusiasm.

I wish you well and look forward to working together for the association in 2026.

Brad Fry

PRESIDENT

13th November 2025

REGULATIONS OF THE ASSOCIATION

EISM PURPOSE

EISM exists to provide a sustainable program of sporting opportunities that are engaging, meaningful, and competitive, for students in its member schools.

RULES OF ASSOCIATION

These can be viewed on the ACNC website www.acnc.gov.au (Australian Charities and Not-for-Profits Commission).

MEMBERSHIP

A list of the current membership is in Appendix V

Other schools may become members by:

- (i) Invitation and acceptance (by the Association).
- (ii) Application and acceptance (by the School).

Obligations

Member schools will be required to take a highly responsible attitude to their participation in the Association's activities as detailed in the 'EISM Code of Ethics and Behaviour'. It is the obligation of member schools to contribute to the life of the Association in such a way that the activities of the Association, as a whole, are viable and effective. Once committed to particular arrangements in a year or a term, the Principal is to see that such EISM arrangements are given the highest possible priority.

Finance

A fixed fee, in conjunction with a 'per student' contribution, to be determined at a Meeting of Principals shall finance the Association's activities. The Association's accounts shall be audited each year. A Statement of Accounts to be presented each term. As per the Rules of Association, member rights are suspended if the annual subscription fee is not paid by the due date.

REGULATIONS OF THE ASSOCIATION cont'd

EISM PARAMETERS OF MEMBERSHIP

In late 2023, it was established as a key strategic priority of the organisation to develop a set of Parameters of Membership for both current and future members of EISM. In mid-2024, the Board ratified the following;

1

A school must be situated in the general Eastern area of Melbourne and in a viable distance range for competition.

2

The school must be coeducational or have a brother/sister school relationship.

3

The school should not be a member of any other secondary school sports association that runs weekly sport.

4

The school must be represented at Principals' and Heads of Sports meetings.

5

Schools commit to providing officials to assist at events and competent match officials must be supplied to officiate at the school's weekly matches, as set out in the EISM Handbook.

6

Sportsmanship and appropriate conduct, as embodied in the 'EISM Code of Ethics and Behaviour', would be expected in all sporting engagements.

7

Commit to entering teams in all compulsory sports in an age group, in whatever structure is determined to ensure integrity of the competition.

8

Schools commit to participating in the EISM Athletics, Swimming and Cross Country Carnivals, in addition to the Weekly Sport program

9

Schools commit to entering teams in all age group competitions as relevant to the Conference/Division that they are competing in, with schools of 300 students or less having the opportunity to apply for an exemption from Junior Sport competitions on application in writing to the EISM Executive Officer (available to existing member schools only, on a year to year basis), for consideration by the EISM Executive.

10

Schools commit to prioritising sport departure times to ensure a start time of between 1.30pm and 1.45pm, and agree to achieving minimum game durations per sport as stated in EISM Handbook to ensure quality and integrity of competition is able to be met for all fixtures.

NOTES;

- Only existing EISM member schools are eligible to apply for the exemption as outlined in Point 9 above.
- Any schools wishing to apply for new membership of EISM must meet all of the above criteria.

REGULATIONS OF THE ASSOCIATION cont'd

GOVERNANCE

The Executive

Comprises:- President, Vice President, Secretary, Treasurer and two Ordinary Members.

The Executive Officer is an ex-officio member of the Executive. The Executive Committee will ideally comprise of at least one member from each of the Eastern Division Conferences and at least one member from the Central Division. The Executive will meet 4 times per year

The Board EISM Member Schools

Comprises:- The Principal (or their Representative) from each EISM Member School as listed on the ACNC Responsible Persons Register.

The Board will meet four times per year. The Board has the power to veto the resolution of the Head of Sport Committee. The Executive Officer attends the Board Meetings in an ex-officio capacity.

Heads of Sport Committee Eastern Division Schools | Central Division Schools

Comprises:- The Head of Sport from each Member School.

The Executive Officer will attend as an ex-officio member. The Head of Sport Committee will be scheduled to meet once per term. Current School Divisions are in Appendix VII.

Head of Sport Committee Members are required to:-

- be familiar with the contents of the EISM Handbook
- communicate with all Sports Teachers regarding their EISM responsibilities
- communicate with their Board Member regarding EISM policy changes
- communicate with the EISM Executive Officer regarding fixtures, teams & other sporting issues
- attend Heads of Sport Committee Meetings once a term
- manage event host/Carnival Committee duties effectively as required by EISM Executive Officer
- ensure weekly sport operates in an effective manner

EISM
Executive
Officer

Change of Regulations:

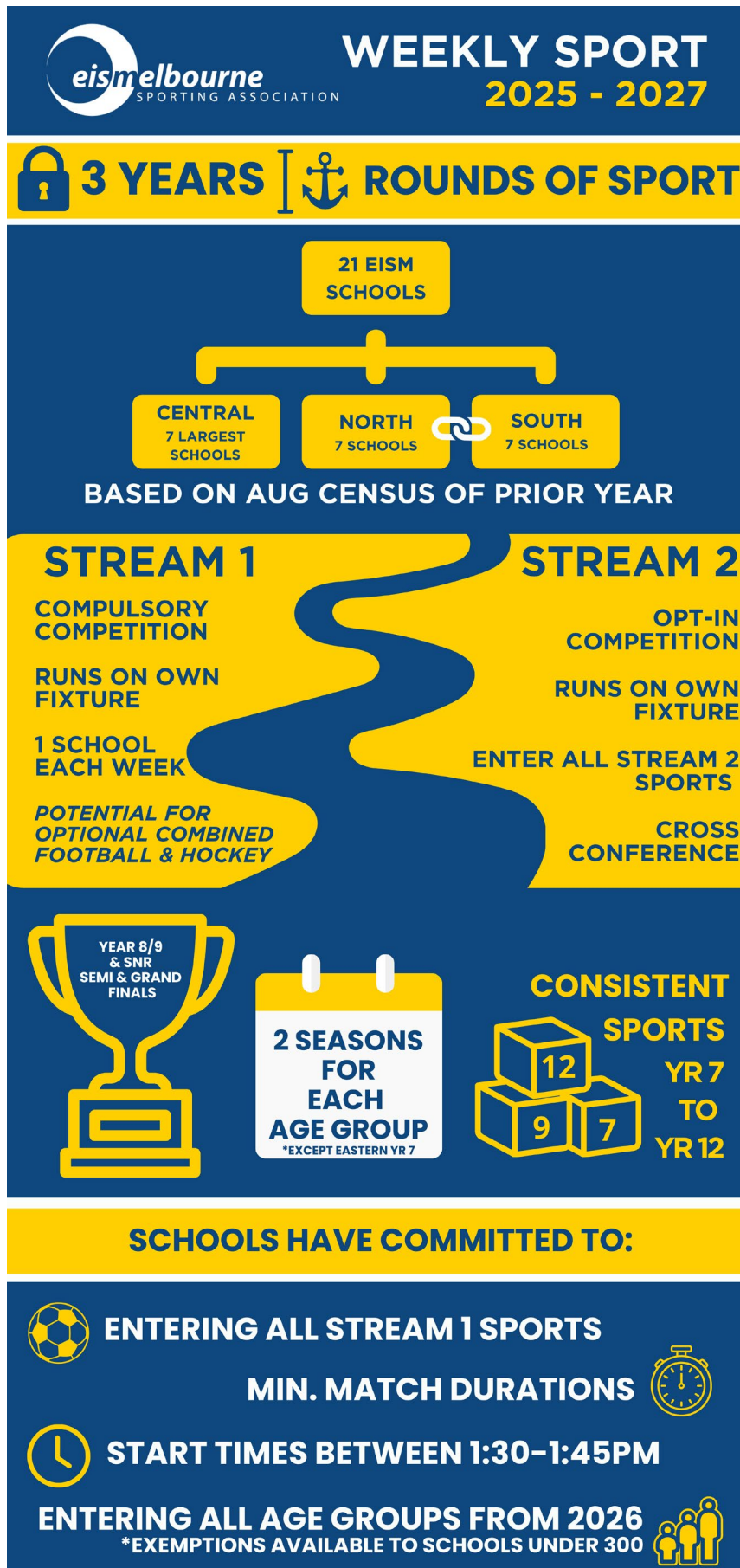
A written proposal must be submitted for consideration by the Board Members. These regulations may be altered only by a majority vote of Members at a Board Meeting after a seven day notice of motion has been given. For a special resolution to alter rules or any of the purposes of the EISM, 75% of the Board needs to vote in favour of the resolution for the resolution to pass.

Support for the Executive Officer

The professionalism of the association is important to all; member schools must give the Executive Officer the staff support requested to conduct events **unless** any change to the Executive Officer's requests has been appropriately negotiated with the appropriate Board Member(s) of the Association.

DIVISION STRUCTURE

The EISM Board have ratified changes to the structure of EISM sport, and have locked in the following design for the 2025 – 2027 school years;



DIVISION STRUCTURE cont'd

CENTRAL DIVISION

Will consist of the seven largest schools by secondary student enrolment based on the February Census in the previous year. Principals will be asked to provide their secondary enrolment numbers to the Executive Officer in February each year to inform the Division structure, and then again in August to inform Membership Fees payable.

- Schools are to enter all Stream 1 Sports in the year level that they are participating, without exception.
- Entry into Stream 2 competition is optional, but if nominating, schools must enter all sports offered in Stream 2.
- Exceptions are available for Football and Hockey, which are offered in Stream 1, but are optional.

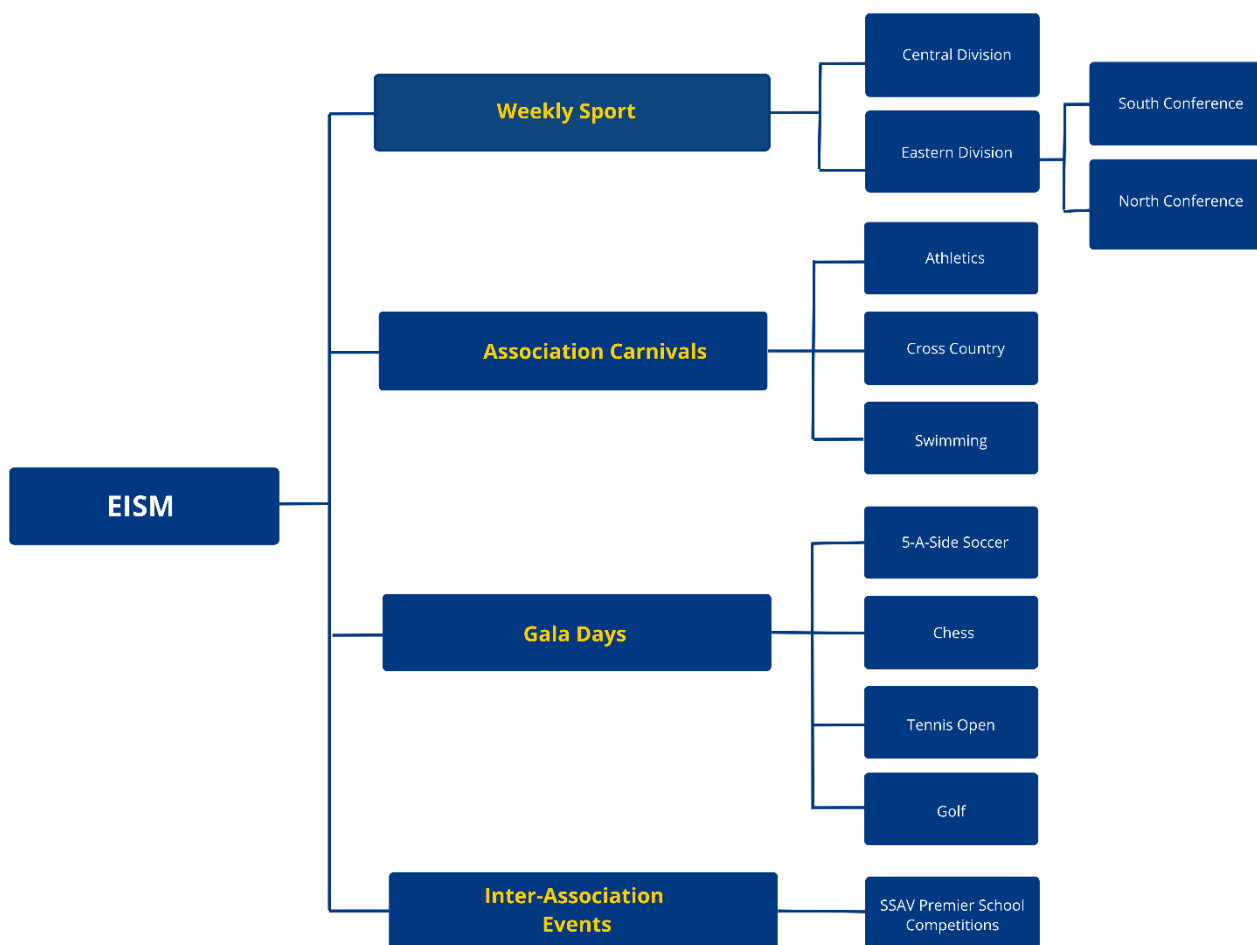
*By mutual agreement between the relevant Principals only, an Eastern Division school may decline the invitation to replace a school in the Central Division for the calendar year.

EASTERN DIVISION

Will consist of the 14 remaining schools and comprise 2 Conferences (North and South) based on geographical location to endeavour to minimise travel times for weekly sport competitions. The boundary for the North and South Conferences may alter depending on the location of schools competing in the Central Division.

- Schools are to enter all Stream 1 Sports in the year level that they are participating, without exception.
- Entry into Stream 2 competition is optional, but if nominating, schools must enter all sports offered in Stream 2.
- Exceptions are available for Football and Hockey, which are offered in Stream 1, but are optional.

PROGRAM STRUCTURE



Weekly Sport

- All sports offered are played by both Boys and Girls
- Boys/Girls alternate Home/Away games – to better maximise access to school facilities
- When finalising the EISM calendar, best endeavours are made to be considerate of key school dates, holidays, events
- As per the EISM Parameters of Membership, schools will liaise on a sport start time of between 1.30pm – 1.45pm, to prioritise ensuring that at least minimum game durations for each sport can be met
- The priority of Junior sport competitions (Year 7 – 9) is to expose students to EISM sport. Finals are not played until Year 9 competitions in the Central Division with participation the primary focus. Finals are played at all year levels in Eastern Division competitions.
- Senior Sport (Yrs 10-12) is the pinnacle sporting competitions across the EISM where competitiveness and participation combine to showcase the EISM spirit.

Association Carnivals

- One Day Carnivals are offered in the key sports of Swimming, Athletics and Cross Country.
- Carnivals are conducted in three Divisions, with the dissemination of conferences based on a promotion and relegation system.

Gala Days

- Additional Gala Days are offered primarily for sports that are not offered as weekly sport options, or are offered in a different format to weekly sport.

Inter-Association Events

- EISM is a member of the School Sports Associations of Victoria (SSAV)
- The SSAV prioritises providing opportunities for EISM Premiership teams to participate in competitions against Premiership teams from other associations in a range of sports.
- Entry to events is via qualification or direct entry with the relevant peak sporting body

HISTORY OF THE EISM

The first instance of the Independent Schools in the Eastern suburbs of Melbourne coming together is in 1964. The 5 foundation member schools were:

<i>Aquinas College</i>	<i>(Ringwood)</i>	<i>St Leos College</i>	<i>(Box Hill)</i>
<i>Kingswood College</i>	<i>(Box Hill)</i>	<i>Whitefriars College</i>	<i>(Donvale)</i>
<i>Luther College</i>	<i>(Croydon)</i>		

Initially the competition was for boys only, and the only sport offered was Australian Rules Football. It developed rapidly to include Athletics, Cross-Country and Swimming carnivals, Cricket, Tennis, and Debating. These competitions were held on Saturdays. It was called the **Eastern Independent Schools Association**.

The 1966 Swimming carnival was held at Croydon Memorial Pool on Saturday March 5th, commencing at 7.30pm. Competition was in the evening and by 1966 there were 8 schools competing:

<i>Aquinas College</i>	<i>(Ringwood)</i>	<i>St Josephs College</i>	<i>(Ferntree Gully)</i>
<i>Kingswood College</i>	<i>(Box Hill)</i>	<i>St Leos College</i>	<i>(Box Hill)</i>
<i>Luther College</i>	<i>(Croydon)</i>	<i>St Thomas More College</i>	<i>(Forest Hill)</i>
<i>Salesian College</i>	<i>(Chadstone)</i>	<i>Whitefriars College</i>	<i>(Donvale)</i>

The 1967 carnival saw Yarra Valley become involved, and they competed in the 1968 carnival as well. They left the association after this time. The 1968 carnival was the first occasion that Mazenod College (Mulgrave) was involved with the EISM. They took the place of Salesian College who moved on to the ACC.

There was a push for girls to have access to inter-school sport, and after extensive meetings in 1970 the following schools formed the **Eastern Independent Girls Schools Association (EIGSA)**:

<i>Aquinas College</i>	<i>(Ringwood)</i>	<i>Mt Lilydale College</i>	<i>(Lilydale)</i>
<i>Chavoin College</i>	<i>(Burwood)</i>	<i>Mt Scopus Memorial Coll.</i>	<i>(Burwood)</i>
<i>Huntingtower</i>	<i>(Mt Waverley)</i>	<i>Our Lady of Sion</i>	<i>(Box Hill)</i>
<i>Luther College</i>	<i>(Croydon)</i>		

Tennis, Softball and a Swimming carnival were contested for the first time in the 1971 season. Matches were conducted on a school afternoon.

The Boys by this stage had included Soccer, Basketball and Table Tennis into their sporting fixtures. Huntingtower joined the boys section of the EISM in 1971, but the boys competition and the girls competition were run as two entirely different entities.

The organizing of the EISM was on a rotational basis with each school having their Head of Sport act as the Secretary for 12 months. This was satisfactory for a short while, but it soon became apparent that a permanent Sports Association Secretary would need to be employed. This position became effective from 1977. The initial appointment was Mr George Wilson, Head of Sport at Kingswood College. George held the position of EIS Secretary until the end of 1998. He had been involved with the EISM since its inception and gave the Association expert leadership and guidance in his time there. George was the one constant in the EISM during the many changes that occurred over the years. His innovations and guidance have seen the EISM grow to become the 'Premier Midweek Co-Educational Sporting Competition'.

Part of the original intention of the EISM was for it to have a cultural component for the boys. This took the form of a Music Festival. Students from all schools would meet at a central venue and give a performance. The girls also had the opportunity to do this as well as participate in a Drama festival.

1977 saw changes within the EIGSA. Mater Christi (Belgrave) began competing at the start of that year but opted out of the association in September of the same year. Kingswood sought membership of the EIGSA, EISM Handbook 2026

whilst Aquinas notified the association that they would not compete in 1978. It was also the year that moves were initiated to combine the boys and girls competitions, with the two meeting formally in the middle of Term 2, 1978. After 12 months of joint meetings, the motion "*That there be an amalgamation of E.I.S.A. with E.I.G.S.A. to form one association*" was put to the Principals meeting on the 8th August 1979. The motion was defeated. An alternative motion was then put which established a committee of Principals and Sports teachers whose task was to investigate the special needs of schools and draw up a draft set of rules and regulations. The second draft of this committee had the name of the association as the ESISA, The Eastern Suburban Independent Schools Association. Eventually, the name **Association of Eastern Independent Schools** was agreed upon in April 1980.

The year 1978 was the year when boys first played their matches on weekday afternoons. In 1978 there were 13 full member schools of the EIS. A further 3 schools were associate members and could compete in carnivals. Schools were also given invitations to attend carnivals and Parkmore College and St Anne's and Gippsland Grammar School accepted this invitation during the 1980's.

The associate schools were:

<i>Billanook College</i>	<i>(Mooroolbark)</i>
<i>Eltham College</i>	<i>(Eltham)</i>
<i>St Leonards College</i>	<i>(Brighton)</i>

The above associate schools became full members in due course. John-Paul College (Frankston) entered the EIS in 1979 and remained until 1986 when they concentrated on the SIS competition.

It was in 1982 that the Drama component of EISM discontinued due to a lack of involvement from member schools.

With regard to the contact between the EISA and EIGSA, it was deemed that there should be two divisions of boys' schools for carnivals and one division for girls. In the first year of two divisions, the larger schools were placed in Division 2, and schools with a smaller enrolment were placed in Division 1. This changed for the 1980 carnivals, with Division 1 being the larger schools' competition. 1980 also saw the return of Aquinas College girls to competition.

In 1980, the Principals agreed that there should be an Executive of the EIS consisting of a President/Treasurer, Vice-President/Secretary, Committee member and Sports Secretary. This Executive was voted in, in October of 1980. Prior to this, the Principals rotated the position of President of the EIS amongst the member schools. In 1981, a representative for girls sport was included on the Executive. This position came from the Sports mistresses from within the EIS.

A competition was held to design a logo. It was deemed that just the letters EIS be incorporated into the logo. A student from Mazenod College was the successful contributor. From the time of the acceptance of this logo, until the latest name change in 1999, the name of the association was EIS, **Eastern Independent Schools**.

In 1984, Salesian College re-entered the EISM after being in the ACC. They stayed in the EIS until the end of 1998. 1986 was also the final of four years of St Johns competing in the EIS. They were also affiliated with the SIS schools, and as that competition grew, St Johns felt they would be overcommitted if they continued in both associations.

HISTORY OF THE EISM cont'd

In 1987, Yarra Valley re-entered the EIS, this time with their girls as participants. St Bedes (Mentone) and Kingswood College (Doncaster), were also admitted at this time. Kingswood Doncaster stayed in the EIS until the end of 1989.

A number of schools were interested in after-school sport for their students, and seven schools competed in a Junior competition (Years 7 & 8) on a Tuesday and Intermediate competition (Years 9 & 10) on a Thursday. This competition ran from 1989 to 1993. The schools initially involved were: Mt Scopus, Sion, Kingswood, Emmaus, Luther, Billanook, Kingswood (Doncaster). The matches were scheduled for the times of 3.30pm to 4.45pm.

In 1991, Loyola College (Bundoora) and Knoxfield College (Wantirna South) entered the EIS. St Leos College, a founding member of the EIS, closed in 1994 due to a fall in student numbers. The late 90's saw significant changes to the composition of the member schools of the association. Bialik College and Donvale Christian College joined in 1996, and when Melbourne Rudolf Steiner School (Warranwood), Plenty Valley Christian School and Williamstown and Westbourne Grammar (Hoppers Crossing) joined in 1997, the EIS had 25 member schools.

1997 was the last year of involvement for Eltham, Loyola, St Leonards, St Michaels and Williamstown & Westbourne. They formed a new association, the Association of Co-Educational Schools (ACS) starting in 1998. St Bedes were affiliated with two associations and decided to continue only with their ACC commitment. Sion also left the association at the end of 1997, opting to do without sport for a year. Part of the reason for the dramatic shift in schools at this time was the release of the Shilbury Report in the January of 1998. Schools had expressed concerns in 1997 about distances travelled, time of day that sport was being played and the place of sport in the school curriculum. The recommendations of the Shilbury Report were for the EIS to aspire to be the '*premier midweek co-educational sporting competition*'. It also went on to suggest that decisions needed to be made as to the geographical area that the EIS should be servicing, and the co-educational nature of member schools entering the EIS.

Two new schools joined in 1998, Alphington Grammar School and Oakleigh Greek Orthodox College. At the end of that year, Whitefriars, a founding member, Salesian and Mazenod all went across to the ACC.

1998 was the final year of George Wilson's tenure as Sports Secretary. Steve Kenworthy took up the appointment of Executive Officer at the start of 1999 and continued in this position until the end of 2019.

The Yarra Valley Grammar girls and boys were competing in a different association (boys in the AGSV) at their school. When the AGSV and APS formed a girls competition with girls from both associations combining to compete in weekly sport, they opted to join this collaborative sporting entity.

The final name change for the association occurred on November 11th 1999. The name now being **Eastern Independent Schools Melbourne Inc.** (EISM).

In 2001, Nunawading Adventist College and Lilydale Adventist Academy joined the EISM. The Tintern Schools (Ringwood) followed them in 2003 and The King David School (Armadale) in 2004.

In 2008, Oxley College entered the association. The Central Division was divided into two equal conferences with Alphington, Donvale, Lilydale, Nunawading, Oxley, Plenty Valley & Rudolf Steiner going into the Northern conference and Bialik, Huntingtower, King David, Kingswood, Knox and OGOC in the Southern conference. The top team in each conference plays off in the final.

Tintern girls had competed in the EISM carnivals since 2003 but had restricted their weekly sport involvement to the GSV competition. From 2010 onwards, all Tintern students competed in EISM for weekly sport and carnivals. 2010 also saw Eltham College re-enter the EISM after several years with the ACS competition.

HISTORY OF THE EISM cont'd

Lilydale Adventist Academy had 10 years membership with the EISM. Sadly, they moved across to another association that catered for smaller schools at the end of 2010.

Kilvington Girls Grammar School went co-educational at the beginning of 2012 and to provide sport for their boys they joined the EISM from Girls Sport Victoria (GSV). They became the 22nd school in the association.

In 2013, the EISM instituted a third Division for weekly sport to be named the Southern Division. The Eastern Division is for schools with student enrolments over 600. The Central Division is for schools with 400 – 600 students and Southern Division schools have fewer than 400 students. The Southern Division schools will contest weekly sport in a stand-alone competition for most sports but there are still several sports that will be offered to both Central and Southern schools. In Cross Country, the Southern Division will be contesting for their own specific individual awards and trophies.

It was with sadness that St Josephs advised EISM that they would be joining ACC in 2017. St Josephs was a founding member of the then EIS. The school had experienced significant growth in numbers in recent years and was a consistent performer in all sports. The EISM wished them well in their new venture.

The EISM office was initially located at Kingswood. It then moved to Billanook in the early 90's before moving to Aquinas in 1999. From 2010 the office was at Luther before moving again to Emmaus (Burwood campus) at the end of 2019.

The EISM announced the appointment of Nathan Bower to the position of Executive Officer in late 2020. Nathan had a background with AFL and Cricket Australia and brought a wealth of knowledge to the position.

The years 2020 and 2021 were challenging for EISM due to the ongoing impact of the Covid-19 pandemic and its related restrictions. The Central and Eastern Division naming conventions were alternated from the 2008 model from 2021 onwards to better reflect the geographical location of the competing member schools for each Division. The seven largest schools (by student numbers) were combined to create the Central Division whereas the remaining 14 schools were combined into the Eastern Division that was made up of a North and a South Conference of seven schools each depending on school location.

A post-COVID consolidation phase from 2022 allowed the Association to see the new Divisional Structure in action for the first time. The association implemented its tiered structure of weekly sport engagement offering compulsory 'A' competitions and optional 'B' and Recreational competitions for Schools to engage at a level they are comfortable with. It was pleasing to all to see students engaging in sport without the threat of COVID implications hanging over our schools.

In mid-2022, Nathan Bower informed the EISM Board that he would be leaving the association to pursue another opportunity within the sports industry. The Board embarked on a thorough process for recruiting Nathan's replacement, and were pleased to appoint Marissa Phillipou to the role. Marissa brought a wealth of experience to the EISM, including roles at the Australian Institute of Sport, Gymnastics Victoria, Netball Victoria and the AFL Players' Association, before spending three years as the Head of Sport Program and Operations at Caulfield Grammar School. Marissa also has a background as a High Performance Basketball Coach, having coached the Australian Under 17 Women's Team at two FIBA World Championships.

With Marissa Phillipou taking six months Maternity Leave in the first half of 2023 following the birth of her second child, Interim Executive Officer, Noel Stevens steered the association through a challenging start to the year. Through the year, schools continued to provide feedback regarding challenges with the multi-faceted fixture, extensive travel requirements and high bus and staffing costs, as well as the inherent difficulties associated with schools of varying size competing in the same Divisions.

HISTORY OF THE EISM cont'd

In late 2023, the EISM embarked upon an independently led Governance, Structural and Strategic Review designed to address these issues and set the association up for the future. Four key Strategic Priorities for 2024 were identified from this work;

1. Develop and agree on a resonant purpose statement for EISM for the future
2. Achieve real clarity around the expectations of membership of EISM
3. Undertake a comprehensive review of the Governance Structure of EISM
4. Establish a viable Conference Structure that is true to our purpose, whilst accepting that we are a diverse membership with varying needs and therefore meeting the needs of all schools, at all times, is unrealistic

The outcomes of this work shaped the development of the 2025 – 2027 EISM Strategy on a Page, providing transparent direction for all involved in the functioning of the association for the short term. Importantly, the Board also resolved to lock all elements of competition structure in for this same three year period, to provide consistency and certainty for all schools in to the future.

The year 2025 ushered in a much welcomed period of stability for the association, and with the certainty of the selection of sports and the structure of the competition locked in, member schools set about continuing to grow and evolve the culture of sport within their schools.

EISM entered the social media space for the first time, launching its EISMSport brand on both Instagram and Facebook. This foray in to this growing area was well received, and has provided a platform for EISM to tell stories about student and team successes and to shape its narrative directly to those that matter most, its student participants.

Additionally, the EISM Executive drove a process of modernisation of its Rules of Association through 2025, with the Board voting to accept these changes at its Annual General Meeting in November.

INTER ASSOCIATION EVENTS

EISM Premier Schools are invited to participate in the following competitions:

AFL Herald-Sun Shield

- In the Boys and Girls Competition there are two divisions with semi-finals and grand finals. Relegation and promotion are possible between the divisions. EISM teams currently compete in Division 2.
- Schools can nominate their Senior teams to participate in the play off day, to determine the EISM representative for the current year.
- The winners of the Central and Eastern Year (8)/9 Grand Finals will organise a play off to determine who will represent EISM in the following year.
- The organising body is AFL Victoria and matches are played predominantly in Term 3.

Cricket

- Senior Boys and Girls have the opportunity to compete in a T20 competition over two days.
- The premier team from Central Division Senior Boys T20 Cricket is invited to compete each year. In the absence of an EISM Girls outdoor cricket competition, the girls representative team will be decided at the discretion of the EISM Executive Officer.
- The organising body is Cricket Victoria and the competition is held in the second week of December.

Golf

- The winning team(s) of the EISM Golf Gala Day will be invited to represent EISM at the SSAV Golf event.
- The organising body is School Sport Associations Victoria
- The competition is held in Term 2 at Lonsdale Links

Indoor Cricket

- Boys and Girls compete in a competition with a round robin and finals on one day.
- The premier teams from the Senior EISM Boys and Girls Eastern Division competitions qualify. The Executive Officer will extend the invitation to the most appropriate teams based on results and standard of play. Where there is a separate North and South Division competition, the winners of the two Divisions will have the opportunity to play off to be the EISM representative at the event.
- The organising body is School Sports Associations Victoria in conjunction with Cricket Victoria.

Soccer

- Boys and Girls compete in a competition with a round robin and semi-finals on one day, followed by finals on another day.
- Schools can nominate their teams to participate in the play off day, to determine the EISM representative for the current year.
- There is the potential for a second EISM team to compete if a space in the draw allows this.
- The organising body is Football Federation Victoria and the competition is held in early September.

Softball

- Girls compete against other premier teams from SSAV schools on a single afternoon with a semi-final and grand final.
- The organising body is School Sport Associations Victoria.
- The competition is held in Term 2 at Jells Park.

Tennis

- Boys and Girls compete in separate teams based competition
- Schools who wish to be considered can submit the UTRs of their best four players to the Executive Officer
- The team which has the highest combined UTR will be selected to represent EISM
- The competition is held in Term 2

Swimming

- The EISM is one of fourteen associations competing in the Victorian School Associations Competition.
- Selection for the EISM squad will be by nomination only, with any student wishing to be selected having to compete in their relevant EISM Division Swimming Carnival in the year of nomination.
- The EISM Team will be selected on assessment of swimmers' best times according to the Swimming Australia Database, Swim Central, in the six month time period prior to the VSAC event.
- The Meet will be held at MSAC in May.
- There will be three age groups offered.
- Students can enter up to a maximum of 5 events (including relays).

Athletics

- As a member of the collaborative School Sports Associations Victoria group, EISM supported the introduction of an Inter-Association Athletics event for the first time in 2026.
- Selection for the EISM squad will be by nomination only, with any student wishing to be selected having to compete in their relevant EISM Division Athletics Carnival in the year of nomination.
- The EISM Team will be selected based on an established set of criteria, to be circulated to all schools in due course.
- The Meet will be held at Lakeside Oval in Albert Park early in Term 4.

AWARDS

TROPHIES, PENNANTS AND MEDALLIONS

Athletics, Cross Country and Swimming:

- Aggregate Perpetual Trophy for highest combined girls' and boys' score.
- Girls Perpetual Trophy for the highest girls' score.
- Boys Perpetual Trophy for the highest boys' score.
- Most Improved School Perpetual Trophy
- Highest Achieving Small School Perpetual Trophy (Five smallest EISM schools eligible if in Division 3).
- The best age group per gender will be announced and recorded on the Annual Summary Pennant.
- All trophy/age group wins will be recorded on the Annual Summary Pennant.
- Personalised Plaque awarded to record breakers (Athletics and Swimming Only).

Weekly Sport Senior, Year 9, Year 8/9, Year 7 (Eastern) Grand Finals:

- The Premiers will be presented with a Perpetual Trophy
- The Premiers will be presented with blue ribboned 'Premiership' medallions for all team members who played in the Grand Final.
- The Best Player from each school will be awarded a yellow ribboned 'Best Player' medallion. This is a peer group decision with each team voting for the recipient of the other school.
- Premiers and Runners Up (where relevant) will be recorded on the Annual Summary Pennant.

Weekly Sport Junior (Yr7 & Yr8) Premiers:

- Premiers and Runners Up (where relevant) will be recorded on the Annual Summary Pennant.

Chess Gala Day:

- A Perpetual Trophy will be presented to the winning team in the Junior and Senior Division.
- All participants from the winning team in the Junior and Senior Division will be awarded a blue ribboned medallion.
- The highest scoring individual from the Junior and Senior Division will be awarded a yellow ribboned medallion.
- The winning team will be recorded on the Annual Summary Pennant.

Tennis Open:

- An individual trophy will be presented to the winner of the boys' and girls' divisions.
- An individual trophy will be presented to the runners up of the boys' and girls' divisions.

5-A-Side Gala Day:

- A perpetual trophy will be presented to the winning team in each division.
- All participants from the winning teams in each division will be awarded a blue ribboned medallion.
- An individual medal will be presented to the best player in the Grand Final of each division, as judged by the referee.
- The winning teams will be recorded on the Annual Summary Pennant.

Golf Gala Day:

- An individual trophy will be presented to the best individual male and female player
- A perpetual trophy will be presented to the winning Open and Female team
- All participants from the winning teams in each division will be awarded a blue ribboned medallion.
- The winning teams will be recorded on the Annual Summary Pennant.

AWARDS cont'd

All school achievements for each calendar year will be listed on a large Annual Summary Pennant. These pennants will be presented to schools at the Term 1 Heads of Sport Meetings.

It is incumbent on schools to update the engraving on trophies, and ensure they are kept clean. No liquid should be used to polish the new trophies. A wipe over with a cloth should be sufficient to maintain their shine.

Engraving should be in a font which is consistent with prior engravings, and schools should list their full school name on the trophy.

Weekly Sport Senior, Year 9 (Central Division) and Year 8/9 and Year 7 (Eastern Division) Trophies are to be given to the host school of the Grand Final, preferably at the Head of Sport meeting where Grand Final hosts are selected for the relevant sport.

Procedures for missing or lost trophies:

A school that does not receive a Trophy at the time of the Event or Grand Final is required to inform the EISM office in writing. A copy of this written notification should also be forwarded to the previous year's trophy holder. Once written notification has been received by the EISM, the responsibility is then on the previous year's trophy holder to locate the trophy or to replace it. If no written notification is received **within a fortnight of the Event or Grand Final**, then the new Premiers will be deemed responsible for its replacement.

GENERAL INFORMATION

HANDBOOK

A Handbook is prepared by the EISM Office, covering the rules and regulations for all Weekly Sporting activities and Association Events. An electronic copy and two hard copies will be sent to each school.

Heads of Sport and Coaches are required to have a full understanding of the content of the EISM Handbook when participating in EISM Sport. Before lodging a protest, regulations and procedures in this Handbook need to be checked.

DISPUTES, PROTESTS & APPEALS

- Weekly Sport: Disputes should be negotiated in the first instance by the teachers/coaches concerned. If there is no resolution to the dispute, the Heads of Sport from the two schools need to attempt to resolve the problem. Failing that the dispute may be brought to the Executive Officer. This should be done in writing and be signed by that school's Principal. The Executive Officer will refer major disputes to the Principals of the schools involved.
- Events:
 - a. Individual Results: Any protest for an individual competition result must be received by the Executive Officer at least 5 minutes before the final competition of the day. It is preferable that the protest be lodged at the first available opportunity to allow a full investigation to occur before Final Event Results are announced.
 - b. Final Event Results: Any school, wishing to protest a declared Final Event Result, should lodge that complaint in writing with the Association through the Executive Officer within 24 hours of the Event Result being announced. The protesting school may or may not choose to inform the school against whom the protest is being lodged, but the Association, not the schools, should resolve all further matters in the dispute.
- Appeals: Heads of Sport may appeal the decision as handed down by the Executive Officer by submitting a written document that is counter-signed by their Principal.

VENUE AND RISK MANAGEMENT

Schools are required to manage their internal school facilities from a risk perspective for Home games and to provide visiting schools with risk management documentation upon request. EISM to provide schools with the appropriate risk management documentation for any EISM booked external venue. This documentation along with EISM Handbook (or relevant extracts), to be available at every EISM fixtured match. Documentation to include:-

- Venue Overview
- Diagram(s) of the Venue
- Certificate of Public Liability Currency
- Risk Assessment Matrix for Indoor and Outdoor Sport
- EISM Home Team Match-Day Checklist (Appendix III)
- Critical Incident Management Checklist

REGISTRATION OF OFFICIALS & PHOTOGRAPHERS

The EISM endeavours to pre-register all Officials & Photographers attending Events through an online form on the EISM Website. Any Official that does not pre-register needs to provide appropriate Photo ID, WWCC/VIT and sign their agreement to the EISM Child Safety Code of Conduct prior to entering any competition area.

STUDENT SUPERVISION

It is the responsibility of each School to ensure that team members and supporters are adequately supervised in all areas of the venue and to be aware that some venues will have prohibited areas. This applies to both weekly sport and events. Of particular importance, is the need for active supervision at venues where there is public access. Schools need to have a supervision policy in place for when an emergency procedure occurs.

EISM POLICIES

Below are the EISM Policies and Sport Operations Protocols. These can be found on the EISM website under the 'About' tab.

Operational Policies: Sport

- Adverse Weather and Thunderstorm Asthma Policy
- Sport Adverse Weather Policy
- Medical Attention Guidelines
- Quality/Condition of Sporting Facilities Guidelines
- Concussion In Sport Policy
- Diversity and Inclusion Policy

Operational Policies: Risk

- Privacy Policy
- Social Media and Networking Policy
- Food Safety Policy General
- Anaphylaxis Policy General
- Transportation of Students Policy General
- Critical Incident Management Plan

Child Safe Policies

- Code Of Conduct
- Child Safe Policy and Commitment Statement
- Child Safe Procedure
- Mandatory Reporting Policy

Sport Operations Protocols

- Heat Out Policy
- Withdrawals and Forfeits Protocols
- Protocol in the Case of an Ineligible Player

EISM Website: www.eism.au

CODE OF ETHICS & BEHAVIOUR

Introduction

The Principals of EISM schools promote sport between their schools as a part of the educational experience for their students. To be successful it needs the active participation of qualified teachers and/or coaches and the support of parents.

In formulating the 'EISM Code of Ethics & Behaviour', the Principals want to encourage their students to attain to the highest degree the skills appropriate to a particular sport and to enjoy a healthy spirit of competition. The Code is to ensure that school communities, students, coaches, teachers and parents work together to attain these goals in a manner that promotes the best standards of respect and sporting behaviour. The Code of Ethics and Behaviour is applicable to all EISM Events, Weekly Sport (including Grand Finals) and Gala Days

THE SCHOOL

- 1.1 The school will communicate any changes of plans to the opposing school before the day of the fixture.
- 1.2 The school will cancel fixtures only in the most extreme circumstances. Two points need to be made; Firstly, the school not forfeiting has the right to claim the points. Secondly it is in the spirit of EISM that both schools make every effort to reschedule the match.
- 1.3 The school will act as a good host, and ensure that directions for visiting teams are clear, that grounds and courts are properly marked, in good repair and safe for play. Change rooms are to be clean and open. If possible, the visiting school should be provided with a key to their change room.
- 1.4 The school will act as good visitors and ensure that teams do not intrude on or disrupt other activities of the host school, the host school's property is respected, that change rooms are not misused and that non-playing visitors are properly supervised.
- 1.5 The host school must ensure that where umpires are to be provided, they are experienced in the game, properly uniformed, unbiased, courteous and have a current WWCC.
- 1.6 The host school must ensure that there are adequate first aid and emergency facilities in place. The contact details of each School's First Aid Officer can be found in Appendix VI at the back of this handbook. Schools should have a Student Accident Management plan in place.
- 1.7 Travelling teams are expected to be equipped with a first aid kit and mobile phone. A list of those students in attendance at the sport matches should be available to safety wardens of the home school in the case of lock down or emergency evacuation.
- 1.8 Both sides must ensure that games begin on time. However, where a team is delayed and phone contact made with the school, the spirit of EISM is that a game be played if possible. A forfeit can only be claimed after consultation between the competing schools' Heads of Sport, or in other circumstances by the Executive Officer.

THE PLAYERS

All players must follow the Sporting Code of Conduct. In addition, players must also comply with the following:

- 2.1 The highest standards of sporting behaviour will be observed at all times.
- 2.2 The uniform worn by all players is to meet the standards as set by the EISM.
- 2.3 Bad language, abuse or poor sporting behaviour will result in the player being removed from the ground by their coach/manager.
- 2.4 Players are encouraged to applaud good play by either side.
- 2.5 Players may not enter into dialogue with spectators.
- 2.6 Players will greet their opponents at the commencement of the game, and at the conclusion of the game acknowledge their opposition in the manner proper to that sport.
- 2.7 Sunscreen and hats should be worn during all summer sports played outdoors
- 2.8 Take-away or delivered food is not to be arranged for consumption during match times at school or external venues.

COACHES AND SUPERVISING STAFF

All Coaches and Supervising Staff must follow the Sporting Code of Conduct. In addition, players must also comply with the following:

- 3.1 Coaches and staff will insist on the highest standard of sporting behaviour at all times.
- 3.2 Coaches must wear a school identifying Photo ID or Name Tag.
- 3.3 Coaches may coach from the sidelines according to the practice of good sporting behaviour appropriate to the particular sport.
- 3.4 Coaches will support the umpire/referee's decisions unequivocally at all times.
- 3.5 Where coaches have legitimate complaints against their opponents, they will state these courteously at the time and report the matter to the appropriate authority upon returning to their own school. Where action is taken by the offended school it must follow the procedure as outlined in the EISM Handbook under section '*Program, General Information – Disputes & Protests*'. If coaches feel the matter should be discussed at the time of the problem, it should be in private and in a courteous and professional manner. If necessary, the Head of Sport or a senior member of either schools' staff should be present to act as a mediator.
- 3.6 As a last resort, coaches have the power to stop a game if it is considered dangerous and injuries are liable to occur. Coaches should remove players from the field for inappropriate behaviour and not wait for the umpires to do so. Refer to the EISM Handbook '*Weekly sport, Code of Conduct - Time Outs*'.

SPECTATORS

- 4.1 All students must be supervised and accounted for at all times
- 4.2 Spectators must not abuse any players or the umpire/referee.
- 4.3 Spectators should applaud good play by either side.
- 4.4 All spectators are to abide by these Code of Ethics and Behaviour, as well as the school's rules and regulations. If they are deemed not be acting in accordance to these rules, then they will be asked to leave the school grounds by the coach of the team that the person is supporting. The Principal will be asked to intervene if there are any problems with the spectator leaving the school grounds. The match will re-commence when the spectator has left the vicinity.
- 4.5 Student spectators must be appropriately dressed.
- 4.6 Any behaviour that interferes with the orderly conduct of an event, or the comfort and freedom of others to watch and enjoy the event, is unacceptable.
- 4.7 Areas used by spectators should be left free of litter.
- 4.8 1:20 Staff to Student ratio to be adhered to for adequate excursion supervision
- 4.9 At least one of the school staff accompanying student spectators must have a current VIT Registration and will be the staff member responsible for the group. Additional school staff must have a valid 'Working With Children Check'
- 4.10 Schools to consider a student's attitude and behaviours when selecting school crowd support
- 4.11 Visiting students and parents are to respect opposition team, officials and venue
- 4.12 Failure to comply with Code of Behaviour expectations may result in penalties including (but not limited to):
 - In-match penalties against the offending school from the match officials
 - Student/s and Schools unable to attend future Grand Finals
 - EISM suspension for offending Student/s

SPORTING CODE OF CONDUCT

PLAYERS

- Have knowledge of the rules. These are available on the EISM Website
- Play by the rules and regulations of the EISM
- Do not argue with Officials. If there is a dispute, this should be brought to the attention of your Coach, Team Manager or Captain. Only these people can approach the Official in a break of play.
- Control your temper. Verbally abusing Officials or Players is unacceptable. Provoking other players is also unacceptable.
- Be a good sport and team player. It is good sportsmanship to appreciate and applaud other team's performances. You could eventually play in an EISM representative team together or in local competitions. Work equally hard for yourself and for your team. You are the public face of your school, and your actions reflect upon the school.
- Treat all players fairly. There should be no bullying or taking advantage of other players.
- Abide by the EISM Child Safety Code of Conduct. This is available on the EISM Website.
- Cooperate with your Teammates, Coaches and opponents. Without these people, there would be no competition.
- No comments on race, gender, sexuality or religion are to be made.
- Enjoy the opportunity to play sport with your schoolmates. After your school years are over, you will never get the chance to experience this again.

COACHES

- Teach your students and abide by the rules of the game. Be sure that all players are aware of specific EISM rules as noted in the EISM website. EISM sport is provided to the students for the participation of the students, not for the glory of coaches. Do not take away the inherent pleasure of playing sport by your actions.
- Never ridicule your players or use derogatory/inappropriate language. Do not abuse or ridicule your players if they make a mistake or do not successfully carry out an instruction.
- Never direct any adverse comments to players of the other team.
- Abide by the EISM Child Safety Code of Conduct. Available on the EISM website in 'About Us'.
- Have read and abide by the EISM Child Safety Policy. Ensure that the safety of the students is foremost in your thoughts. Any injured player is to be dealt with in an appropriate manner immediately. Nothing should compromise this position. Abide by the Child Protection Mandatory Reporting Obligation.
- Develop team respect for the ability of opponents. Respect also for the judgement of Officials and opposing Coaches. Players will look to your example of what is acceptable behaviour.
- Give all players equal opportunity to participate. When in a winning position, give players of lesser ability a chance to increase their participation. Massive wins over lower teams does not increase your percentage or chances of making finals.
- Keep up to date with coaching developments and innovations.
- No comments on race, gender, sexuality or religion are to be made.
- Coaches to supervise the conduct of spectators. Coaches to ensure that the spectators at EISM matches abide by EISM Code of Ethics and Behaviour and also the school rules and regulations. Ensure that spectators (1) do not interfere with the orderly conduct of an event, or the comfort and freedom of others to watch and enjoy the sport, (2) are encouraged to applaud the good play of both sides, (3) leave the area free of litter at the conclusion of the match.

EISM CHILD SAFETY CODE OF CONDUCT

The EISM Child Safety Code of Conduct outlines standards of conduct that are expected of all EISM staff, team members and parents/spectators.

An objective of this Code of Conduct is to promote and ensure child safety.

This Code of Conduct is intended to provide a guidance framework only and is not an exhaustive list of the required standards.

Full details of the following are available through the EISM Website (www.eism.au):-

EISM Child Safety – Code of Conduct

EISM Child Safety – Child Safety Policy and Commitment Statement

EISM Child Safety – Child Safe Procedure

EISM Child Safety - Mandatory Reporting Policy

GUIDELINES FOR CANCELLATION OF WEEKLY SPORT & ASSOCIATION EVENTS

HEAT OUT POLICY:

1. Prior to the Day of Competition

- 1.1 If at 10.00am on the day prior to the competition the predicted temperature in the Greater Melbourne and Metropolitan area as provided by the Bureau of Meteorology (BoM) is 40oC or above, then the EISM Sports Office in conjunction with the Heads of Sport will by 11.00am on the day prior, cancel all sport (for the sake of clarity this includes indoor and outdoor sport).
- 1.2 Prior to the competition, the monitoring of the predicted temperature will be the responsibility of the EISM Sports Office.
- 1.3 If there is an advance hot weather forecast, when both Heads of Sport agree, the matches between those schools can be cancelled prior to the day.

2. On the day of the competition and/or event

- 2 If at 8.00am on the day of the competition, the predicted temperature in the Greater Melbourne and Metropolitan area as provided by the Bureau of Meteorology (BoM) is 35oC or above, all sport will be cancelled by the EISM Executive Officer, who shall notify all schools by email.

3. During the Day of Competition and/or Event

- 3.1 At 31oC (ambient temperature) Directors of Sport, Sport Coordinators and Coaches must consider and implement where appropriate management procedures consistent with the advice provided in Appendix 1 which will attempt to ensure that environmental and risk factors relevant to heat stress are minimised.
- 3.2 Once the ambient temperature is 35oC or above, then the competition or training must be suspended (pool venues excluded). If the temperature does not fall below 35oC during the subsequent 30 minute period then the competition or training must be cancelled. If, following this suspension of play, Minimum Match Durations (as listed in the EISM Handbook 2025) cannot be met, the fixture should be cancelled and the Heat Out Policy enacted.
- 3.3 On the day of the competition or training, it is the responsibility of the Home School Sports Coordinator or their delegated representative, with the support of their Principal, to monitor the BoM Website to determine local temperatures.

4. Competition Implications of a Heat Out

- 4.1 All scheduled matches on “Heat Out” days are deemed a draw, unless a suitable reschedule date can be found.
- 4.2 Schools fixtured with a bye in a round that is declared a Heat Out, will receive 4 points.
- 4.3 Other matches from that round that are scheduled to be played on a different date are to proceed as listed. Results of matches already played will stand.
- 4.4 If a Heat Out is declared on a Grand Final day, fixtures may proceed if being played in an air-conditioned venue.

GUIDELINES FOR CANCELLATION OF WEEKLY SPORT & ASSOCIATION EVENTS cont'd

AIR QUALITY POLICY:

- a) When the Air Quality Index (AQI) reading reaches **51+ PM2.5**, Heads of Sport and coaches, where appropriate, must consider and implement management procedures consistent with the advice provided in Appendix 2 of the Air Quality Policy which will attempt to ensure that environmental and risk factors relevant for respiratory issues/stresses are minimised.
- b) Once the AQI reading reaches 100 PM2.5 or above, then the game/training must be suspended. If the AQI reading does not fall below 100 PM2.5 during the subsequent 60-minute period then the game/training must be cancelled.
- c) On the day of the Competition and or Training, the responsibility for monitoring air quality is as described below:
 - **Outdoors:** It is the responsibility of the *Home School Head of Sport* or their delegated representative to monitor the Air Visual App to determine local air quality.
 - **Indoors:** It is the responsibility of the *Home School Head of Sport* or their delegated representative to use an air quality detector to measure the air quality.

THUNDERSTORM ASTHMA POLICY:

- a) During grass pollen season (indicatively 1 October to 31 December) people may notice an increase in asthma and/or hay fever symptoms. Grass pollen season increases the chance of epidemic thunderstorm asthma. EISM Member Schools must:
 - develop a school Thunderstorm Asthma Policy and sign an annual attestation that the policy complies with Thunderstorm Asthma Policy Requirement - General Framework at Appendix 3 of Thunderstorm Asthma Policy;
 - ensure that any internal school policies reflect the requirement of EISM as outlined in Thunderstorm Asthma Policy Requirement - General Framework at Appendix 3 of Thunderstorm Asthma Policy; and
 - monitor the public information and amend their own policies consistent with any changes.

ELECTRICAL STORMS/ LIGHTNING:

- a) In the event of electrical/thunderstorms, (especially if the time delay between thunder and the flash is less than 30 seconds) players, coaches and officials should seek urgent safe shelter. Play should only restart if at least 20 minutes has passed since the last sound of thunder and coaches and officials are confident of player safety.
- b) Severe Hail: When safety is compromised by severe hail, coaches and officials should agree to abandon play and seek immediate shelter until the hail stops and it is safe to restart play.

MAJOR EVENTS:

In the event of an imposed delay or cancellation due to adverse weather for EISM Athletics Carnivals and Gala Days, these events may continue when it is safe to proceed in whole or part at the discretion of the EISM Office and in conjunction with the EISM Executive Officer.

UNSAFE PLAYING CONDITIONS

If a coach and an official agree that a playing surface is unsafe then the match shall be rescheduled (if possible) or deemed a draw. If the match started but was then abandoned refer to 'Conduct of Weekly Sport' for Allocation of Results for Incomplete Matches.

ALLOCATION OF RESULTS FOR INCOMPLETE MATCHES (WEATHER EVENT, INJURY, ETC)

Refer to Conduct of Weekly Sport.

FIRST AID

GUIDELINES FOR TREATMENT OF BLEEDING & BLOOD BORNE INFECTIONS

- a) No Member School shall allow any player to participate or continue to participate in any EISM match for so long as such player is bleeding or has blood on any part of their person or uniform.
- b) On the direction of any officiating Umpire:
 - A player who is bleeding or has blood on their clothing must immediately leave the playing field or court and seek medical attention.
 - The bleeding must be stopped, the wound dressed and blood on the player's body cleaned off before they return to the game.
 - Play must cease until all blood on the ground or equipment is cleaned up. Any player thus directed to leave the field can be replaced immediately in accordance with normal interchange rules.
- c) All blood and body fluids should be treated as though they are potentially infectious, latex gloves should always be used when treating a player.
- d) Each Member School shall ensure that any bloodied item of uniform or clothing of a player or official is placed as soon as possible in a hygienic sealed container i.e. closed plastic bag and laundered to ensure the removal of all blood.
- e) Each Member School shall ensure that all towels, wipes, bandages, dressings and other materials used in the treatment of bleeding players shall be placed as soon as possible in a hygienic sealed container and discarded or laundered in such a way as to remove all blood and risk of infection.
- f) It is strongly recommended that all coaches, students and officials participating in body contact sports should be vaccinated against Hepatitis B.

Blood Rules Ok Pamphlet:

https://sma.org.au/wp-content/uploads/2023/03/Blood_rulesOK-pamphlet.pdf

WEEKLY SPORTS – CENTRAL DIVISION 2026

All fixtures and ladders are available on the EISM Website (www.eism.au)

SENIOR					
Season 1		Season 2			
Stream 1		Stream 1			
BOYS	GIRLS	BOYS	GIRLS		
Badminton	Badminton	Netball A	Netball A		
Basketball A	Basketball A	Netball B	Netball B		
Basketball B	Basketball B	Table Tennis	Table Tennis		
Softball	Softball	Volleyball A	Volleyball A		
Tennis	Tennis	Volleyball B	Volleyball B		
Touch Football	Ultimate Frisbee	Ultimate Frisbee	Touch Football		
Twenty/20 Cricket	Indoor Cricket	Soccer	<i>Hockey (opt.) (comb.)</i>		
<i>Hockey (opt.)</i>	Soccer	<i>Football 12s (opt.)</i>	<i>Football 12s (opt.)</i>		
YEAR 9					
Season 1		Season 2		Season 3	
Stream 1		Stream 1		Stream 1	
BOYS	GIRLS	BOYS	GIRLS	BOYS	GIRLS
Indoor Cricket	Indoor Cricket	Badminton	Badminton	5-A-Side Soccer	5-A-Side Soccer
Tennis	Tennis	Netball A	Netball A	Basketball A	Basketball A
Volleyball A	Volleyball A	Netball B	Netball B	Basketball B	Basketball B
Volleyball B	Volleyball B	Soccer	<i>Hockey (opt.)</i>	Softball	Softball
Ultimate Frisbee	Touch Football	<i>Football 12s (opt.)</i>	<i>Football 12s (opt.)</i>	Table Tennis A	Table Tennis A
<i>Hockey (opt.)</i>	Soccer			Table Tennis B	Table Tennis B
				Touch Football	Ultimate Frisbee
YEAR 8					
Season 1		Season 2			
Stream 1		Stream 1			
BOYS	GIRLS	BOYS	GIRLS		
Basketball	Basketball	Badminton	Badminton		
Softball	Softball	Netball	Netball		
Tennis	Tennis	Touch Football	Indoor Cricket		
Volleyball	Volleyball	<i>Hockey (opt.)</i>	Soccer		
Indoor Cricket	Touch Football	<i>Football 12s (opt.)</i>	<i>Football 12s (opt.)</i>		
Soccer	<i>Hockey (opt.)</i>				
YEAR 7					
Season 1		Season 2			
Stream 1		Stream 1			
BOYS	GIRLS	BOYS	GIRLS		
Netball	Netball	Basketball	Basketball		
Table Tennis	Table Tennis	Indoor Cricket	Indoor Cricket		
Soccer	Touch Football	Ultimate Frisbee	Ultimate Frisbee		
<i>Football 12s (opt.)</i>	<i>Football 12s (opt.)</i>	Volleyball	Volleyball		
<i>Hockey Mod. (opt.)</i>	<i>Hockey Mod. (opt.)</i>	Touch Football	Soccer		

WEEKLY SPORTS – NORTH EASTERN DIVISION 2026

All fixtures and ladders are available on the EISM Website (www.eism.au)

SENIOR					
Season 1		Season 2			
Stream 1		Stream 1			
BOYS	GIRLS	BOYS	GIRLS		
Basketball	Basketball	Badminton	Badminton		
Soccer	Soccer	Indoor Cricket	Indoor Cricket		
Softball	Softball	Netball	Netball		
Table Tennis	Table Tennis	Volleyball	Volleyball		
Stream 1 (Combined)		Stream 1 (Combined)			
<i>Hockey (opt.)</i>		<i>Football 15s (opt.)</i>		<i>Football 12s (opt.)</i>	
				<i>Hockey (opt.)</i>	
Stream 2 (Combined)		Stream 2 (Combined)			
Basketball B	Basketball B	Netball B	Netball B		
Basketball C	Basketball C	Volleyball B	Volleyball B		
Table Tennis B	Table Tennis B	Badminton B	Badminton B		
YEAR 8/9					
Season 1		Season 2		Season 3	
Stream 1		Stream 1		Stream 1	
BOYS	GIRLS	BOYS	GIRLS	BOYS	GIRLS
5-A-Side Soccer	5-A-Side Soccer	Indoor Soccer	Indoor Soccer	Badminton	Badminton
Basketball A	Basketball A	Table Tennis	Table Tennis	Indoor Cricket	Indoor Cricket
Basketball B	Basketball B	Ultimate Frisbee	Ultimate Frisbee	Netball	Netball
Soccer	Soccer	Volleyball A	Volleyball A	Tennis	Tennis
Softball	Softball	Volleyball B	Volleyball B	Touch Football	Touch Football
<i>Hockey (opt.)</i>					
		Stream 1 (Combined)		Stream 1 (Combined)	
		<i>Football 12s (opt.)</i>		<i>Football 12s (opt.)</i>	
				<i>Hockey (opt.)</i>	
Stream 2 (Combined)		Stream 2 (Combined)		Stream 2 (Combined)	
Basketball C	Basketball C	Volleyball C	Volleyball C	Netball B	Netball B
Basketball D	Basketball D	Volleyball D	Table Tennis B	Netball C	Badminton B
Indoor Soccer	Indoor Soccer	Table Tennis B		Badminton B	
YEAR 7					
Season 1		Season 2		Season 3	
Stream 1		Stream 1		Stream 1	
BOYS	GIRLS	BOYS	GIRLS	BOYS	GIRLS
Badminton	Badminton	Indoor Cricket	Indoor Cricket	Basketball	Basketball
Netball	Netball	Table Tennis	Table Tennis	Indoor Soccer	Indoor Soccer
Soccer	Soccer	Volleyball	Volleyball	Softball	Softball
Stream 1 (Combined)		Stream 1 (Combined)			
<i>Hockey (opt.)</i>		<i>Hockey (opt.)</i>		<i>Football 12s (opt.)</i>	
		<i>Football 12s (opt.)</i>		<i>Football 12s (opt.)</i>	
Stream 2 (Combined)		Stream 2 (Combined)		Stream 2 (Combined)	
MIXED		MIXED		BOYS	GIRLS
Badminton B		Table Tennis B		5-A-Side Soccer	5-A-Side Soccer
				Basketball B	

WEEKLY SPORTS – SOUTH EASTERN DIVISION 2026

All fixtures and ladders are available on the EISM Website (www.eism.au)

SENIOR					
Season 1		Season 2			
Stream 1		Stream 1			
BOYS	GIRLS	BOYS	GIRLS		
Basketball	Basketball	Badminton	Badminton		
Soccer	Soccer	Indoor Cricket	Indoor Cricket		
Softball	Softball	Netball	Netball		
Table Tennis	Table Tennis	Volleyball	Volleyball		
Tennis	Tennis				
Stream 1 (Combined)		Stream 1 (Combined)			
<i>Hockey (opt.)</i>		<i>Football 15s (opt.)</i>		<i>Football 12s (opt.)</i>	
Stream 2 (Combined)		Stream 2 (Combined)			
Basketball B	Basketball B	Netball B	Netball B		
Basketball C	Basketball C	Volleyball B	Volleyball B		
Table Tennis B	Table Tennis B	Badminton B	Badminton B		
YEAR 8/9					
Season 1		Season 2		Season 3	
Stream 1		Stream 1		Stream 1	
BOYS	GIRLS	BOYS	GIRLS	BOYS	GIRLS
5-A-Side Soccer	5-A-Side Soccer	Indoor Soccer	Indoor Soccer	Badminton	Badminton
Basketball A	Basketball A	Table Tennis	Table Tennis	Indoor Cricket	Indoor Cricket
Basketball B	Basketball B	Ultimate Frisbee	Ultimate Frisbee	Netball	Netball
Soccer	Soccer	Volleyball A	Volleyball A	Tennis	Tennis
Softball	Softball	Volleyball B	Volleyball B	Touch Football	Touch Football
<i>Hockey (opt.)</i>					
Stream 1 (Combined)		Stream 1 (Combined)		Stream 1 (Combined)	
		<i>Football 12s (opt.)</i>		<i>Football 12s (opt.)</i>	
Stream 2 (Combined)		Stream 2 (Combined)		Stream 2 (Combined)	
Basketball C	Basketball C	Volleyball C	Volleyball C	Netball B	Netball B
Basketball D	Basketball D	Volleyball D	Table Tennis B	Netball C	Badminton B
Indoor Soccer	Indoor Soccer	Table Tennis B		Badminton B	
YEAR 7					
Season 1		Season 2		Season 3	
Stream 1		Stream 1		Stream 1	
BOYS	GIRLS	BOYS	GIRLS	BOYS	GIRLS
Badminton	Badminton	Indoor Cricket	Indoor Cricket	Basketball	Basketball
Netball	Netball	Table Tennis	Table Tennis	Indoor Soccer	Indoor Soccer
Soccer	Soccer	Volleyball	Volleyball	Softball	Softball
				Tennis	Tennis
Stream 1 (Combined)		Stream 1 (Combined)			
<i>Hockey (opt.)</i>		<i>Hockey (opt.)</i>		<i>Football 12s (opt.)</i>	
Stream 2 (Combined)		Stream 2 (Combined)		Stream 2 (Combined)	
MIXED		MIXED		BOYS	GIRLS
Badminton B		Table Tennis B		5-A-Side Soccer	5-A-Side Soccer
				Basketball B	

CONDUCT OF WEEKLY SPORT

The following requirements are regarded as basic to the proper conduct of games in terms of our sporting ideals and essential to the smooth administration of the program. The basic consideration behind these regulations is the realization of the ideals of the Association, the maximum enjoyment of all participating in these games, their welfare, dignity, and safety.

TEAM ENTRIES

- Schools are to enter all Stream 1 Sports when participating in a year level. Entry into Stream 2 Sports is optional, but if nominating, schools must enter all sports offered in the Stream 2 competition. Exceptions are available for Football and Hockey, which are offered in Stream 1, but are optional.
- Notification must be made to the EISM Office of any team withdrawal from a nominated Optional sport or from all Stream 2 sports, and must be done by completing the form 'EISM Team Withdrawals & Additions' (Appendix IV).
- The EISM Board have approved the following Operational Protocols as included in this document, and these must be adhered to by all schools;
 - Withdrawals and Forfeits Protocol
 - Protocol in the Case of an Ineligible Player
- All players and coaches are to have the EISM Sporting Code of Conduct explained to them prior to the commencement of the season.
- In all sports where applicable, the best players should constitute the 'A' team. During the season, swapping of 'A' & 'B' players is permissible, but should always comply with the best player available playing in the 'A' team.
- No student may play more than once in any EISM round of games, e.g. (i) Year 9 & Senior, (ii) volleyball and cricket, or any other combination. Once a student has completed playing in their nominated competition, their EISM season has concluded. No student from these teams is to play in any other sport for the remainder of that season.
- The number of students per team is listed below. If teams cannot meet or maintain the minimum number on the field, a forfeit can be called by the opposition Head of Sport. Where safe to do so, friendly matches should still go ahead with the numbers available. This could include playing matches with shared players.

Sport	Team Numbers		Forfeit Score (To determine finalists)
	Team Size	Minimum	
5-A-Side Soccer	5	3	7-0
Badminton	8	Schools unable to field all players shall forfeit those sets that are not played. If 50% or more of the matches are forfeited, the entire fixture will be considered a forfeit.	2/30-0/0 2/42-0/0
Basketball	5	4 to start the game; 2 to continue	50-0
Football 12s	12	8	60-0
Football 15s	15	9	60-0
Hockey	11	8	7-0
Hockey – Modified	7	5	7-0
Indoor Cricket	8	6	35-0
Indoor Soccer	5	3	7-0
Netball	7	5	30-0
Soccer	11	7	7-0
Softball	9	6	15-0
Table Tennis	6	Schools unable to field all players shall forfeit those sets that are not played. If 50% or more of the matches are forfeited, the entire fixture will be considered a forfeit.	6-0
Tennis	C – 4 E – 6		4-0
Touch	6	4	10-0
Twenty/20 Cricket	11	7	0/50
Ultimate Frisbee	7	5	3-0
Volleyball	6	4	3-0; 54-0

CONDUCT OF WEEKLY SPORT cont'd

GENERAL UNIFORM REGULATIONS

1. Schools shall register their sports uniforms with the EISM Executive Officer for presentation on the EISM Website. Photos of the uniform items are to be sent to the Executive Officer.
2. Wherever confusion arises because competing teams have similar colours, the visiting team shall have preference and the home team wear the 'clash strip' or clash vests.
3. Players in a team must wear identical uniforms, with all playing tops being the same colour. In netball, teams must wear either netball dresses, or t-shirts and shorts/skirts. A combination of both within the same team is not permitted. Bibs must be identical.
4. Before the match commences, coaches must establish that the students of both teams are in their schools' correct uniform. This is a confidential discussion between coaches and is not to involve students.
5. Any compression garment that is not visible and is worn under the student's uniform is permissible. eg. under track pants in an indoor sport.
6. Visible compression garments may be worn, provided they are of similar colour to the school's main sport uniform colour/s. Skin coloured compression garments may also be worn.
7. Long pants are only permitted where specifically identified under the sport specific section of this document.
8. No jewellery is to be worn, and nails are to be cut short.
9. Sport specific uniform requirements are outlined in the Weekly Sport Match Regulations pages following. All schools are required to adhere to these requirements.
10. No jackets should be worn during any sporting contest. Where long sleeves are appropriate, these must be worn under playing tops and must be in the same colour as the playing uniform. School issue Rugby Tops (or equivalent) may be appropriate in some sports, as per the Sport Specific Uniform Regulations further in this document.
11. Appropriate sport specific shoes/football boots must be worn at all times during EISM sport competitions and events
12. EISM must remain a culturally safe sporting environment for students. Exemptions to uniform regulations may be given for students due to cultural or medical reasons. In these cases, the student's Head of Sport can grant this exemption, and they must then inform their opposition Head of Sport of the exemption each week to ensure that relevant opposition coaches are aware on the day.
13. Where failure to meet uniform regulations endangers the player or other players, the player should not be permitted to play until the issue has been resolved.
14. Numbered playing tops are required in the following sports: Basketball, AFL and Touch Football.
15. Numbered tops are preferred in the following sports: Soccer and Hockey. Numbered playing tops will become compulsory in these sports, as per the timeline below:

Timeline for Implementation of Compulsory Numbered Playing Tops					
Sport	Year 7	Central – Year 8	Central – Year 9	Eastern – Year 8/9	Senior
Basketball	2025	2025	2025	2025	2025
AFL	2025	2025	2025	2025	2025
Touch Football	2025	2025	2025	2025	2025
Soccer	2027	2027	2028	2028	2029
Hockey	2027	2027	2028	2028	2029

CONDUCT OF WEEKLY SPORT cont'd

MINIMUM MATCH DURATION

1. The starting time of games is between 1.30pm and 1.45pm. Start times must be observed, however games may start at other times by mutual agreement. Heads of Sport should confirm arrangements prior to every round; match officials and venues must be notified accordingly. Regardless of start time, all matches must meet the minimum game lengths outlined under the individual sport Match Regulations.
2. If a team arrives after 1:45pm, without prior agreement, the late team is obligated to stay to ensure minimum match durations are met. The opposition who were on time, should make every effort to stay to ensure minimum match durations are met, however are entitled to call a forfeit against the late team, if they are unable to stay long enough to meet minimum match durations. In this case, a friendly match should still be played (see forfeit guidelines on page 37).
3. Minimum match durations do not apply in exceptional circumstances, such as lightning or power outages. Teams should refer to the Incomplete Match Guidelines outlined under the individual sport Match Regulations
4. Playing only to minimum match durations, rather than expected match durations, should be a rare occurrence. Where a school consistently arrives at a time that only allows minimum match durations to be met, the Executive Officer may intervene.

MATCH AMENDMENTS

1. All amendments must be presented to the EISM Office for approval.
2. When a school makes an amendment to an existing match, schools are responsible for notifying the opposition school, venues, and officials of the changes that have been made.

HOME TEAMS

1. Home schools are to ensure that the venues listed on Clipboard are correct. Any changes to venues must be communicated to opposition schools in a timely manner, and it is the responsibility of the home school to ensure the opposition school have acknowledged any late changes.
2. To confirm arrangements, the visiting team must contact the home school at least two days before matches are to be played.
3. In the event of a team attending the wrong venue, the venue which is on Clipboard will be deemed the correct venue, unless the mistaken team can prove that communication around a venue change was inadequate.
4. Visiting teams are to be greeted on arrival by a representative of the home team and directed to the various venues.
5. Home schools are to provide facilities for players, and the match ball.
6. Schools should make every effort to ensure that visiting teams are suitably accommodated, guided to the changerooms, and given whatever assurance may be necessary about their belongings.
7. Home Teams should complete the 'Home Team Match Day Checklist' Appendix III

AWAY TEAMS & EXTERNAL VENUES

1. The Coach must be conversant with the ideals of the Association and its Regulations. Staff/Coaches-Student ratios must follow Victorian Education Department policies. Games may not go ahead without adequate supervision.
2. When visiting a school or external venue, their rules need to be observed.
3. Schools need to have a staff member with appropriate qualifications, a First Aid Kit, Mobile Phone, contact details for each School's First Aid Officer and a Student Accident Management Plan.
4. Any student diagnosed as having anaphylactic reactions MUST have with them their own epipen whenever they attend EISM sport.
5. Teams need to have with them the appropriate Venue and Risk Management Information as well as the relevant information from the EISM Handbook.
6. An attendance register for away teams needs to be provided upon request to the Host School.
7. All visiting staff should display appropriate identification (eg. VIT, School ID, WWC Check).

CONDUCT OF WEEKLY SPORT cont'd

VENUES BOOKED BY EISM

1. EISM book external venues for: Badminton, Hockey, Indoor Cricket, Indoor Soccer and 5-A-Side Soccer.
2. The home team will be invoiced for the cost of venue hire, either by the venue, or via invoice from EISM.
3. Schools must notify EISM of any known forfeits or date changes which impact on external venue bookings, and follow the Process for Management of Forfeits protocol.
4. Bookings at external venues are subject to their cancellation policies, and matches cancelled without sufficient notice may still be charged.

FORFEITS

1. The priority of EISM and its member schools is to have students involved in meaningful sporting matches wherever possible.
2. **Forfeits should only be given when absolutely necessary, and only Heads of Sport or the EISM Executive Officer have the authority to declare forfeits.**
3. Heads of Sport may declare a forfeit for a variety of reasons, including, but not limited to: Teams not arriving at the venue for competition (if the venue on Clipboard is correct), teams not being ready to play by 1:45pm (without prior agreement), or teams having insufficient numbers. Consideration should be given to the impact those issues had on the outcome of the match when declaring a forfeit.
4. In 2025, incorrect uniform is not a viable reason to enforce a forfeit. In the instance that a school has a concern regarding the way its opposition has presented for a fixture with regards to uniform, the school should put that concern in writing to the EISM Executive Officer within 48 hours of the fixture. The communication should be attributed to the Principal of the school issuing the complaint. The Executive Officer will then forward that complaint to the school in question. The Executive Officer will keep a register of all complaints made to this end.
5. When it is a safe and viable option, scored matches should go ahead with adjustments as needed, and a forfeit be discussed between Heads of Sport following the match. Coaches should make note of any events which impacted the match and report back to their Head of Sport.
6. Where it is not possible to go ahead with an official match i.e. insufficient numbers; schools are encouraged to play a friendly match, which may include sharing players.
7. Matches should not go ahead where a forfeit is declared based on safety issues.
8. In the event that a school is short of players, the A match must go ahead in the first instance. If the A team is short of players, B players must fill the A team to ensure that contest goes ahead, regardless of the impact on the B team. If this results in insufficient numbers for the B team, the B team must forfeit the match.
9. A forfeit must be agreed upon within the results entry timeframes outlined under 'Results'. Where agreement cannot be reached, Heads of Sport must advise the EISM Executive Officer in writing within 48 hours of the match commencing. Once a forfeit is confirmed on Clipboard by both schools, it is considered official.
10. A list of schools' forfeited matches shall be provided to the Principals at the end each term.
11. Where a match scheduled on a religious holiday, and a reschedule date cannot be found, the match will be deemed a draw.
12. Where a school is closed or unable to travel due to extreme weather, unplanned school-wide closures or other unavoidable extreme circumstances, the match should be rescheduled in the first instance. Where a match cannot be rescheduled, it will be deemed a draw.
13. In the event of a heat out or wash out, if a reschedule date that suits both schools cannot be found, the match will be deemed a draw.

CONDUCT OF WEEKLY SPORT cont'd

PROCESS FOR MANAGEMENT OF FORFEITS

As of 2025, the EISM Board have ratified the following process to be enacted in the event of a school forfeiting a fixture prior to the scheduled start time of the fixture;

1. The school requesting the forfeit is responsible for managing all venue impacts, including where a centralised venue is used. In these circumstances, the school must contact the external venue directly to inform them that the fixture will not be going ahead.
2. Where the school fails to contact the external venue, any cancellation fees stemming from this lack of communication will be forwarded to the school for their payment.
3. The school making the forfeit must contact their opposition school with enough time for them to cancel buses, or use the venue for training if desired.
4. Where the school fails to alert their opposition school of the forfeit, OR there is insufficient time for the opposition school to cancel buses without incurring a fee, the school will be liable to cover the costs of any buses/bus cancellation fees.
5. The school forfeiting the fixture is required to cover the costs of umpires/officials.
6. The school forfeiting the fixture is also required to mark the fixture as a forfeit in Clipboard, to ensure that the outcome is correctly recorded.

PROCESS FOR THE MANAGEMENT OF WITHDRAWALS

As of 2025, the EISM Board have ratified the following process to be enacted in the event of a school requesting to withdraw teams from competition;

1. From 2025 onwards, withdrawals will only be relevant in Stream 2 sports, as well as the Optional Sports of Football and Hockey.
2. If Withdrawals are sought prior to, or at the completion of, the first week of the relevant Pre-Season period, no sanctions will apply.
3. Where a school requests a withdrawal following the deadline outlined in Point 2, a one-off fee will apply (\$100 per team withdrawn). This fee is designed to be a deterrent to schools from withdrawing teams, whilst also providing a small pool of funds to cover costs associated with managing withdrawals, such as rescheduling, venue relationships and other costs.

PROCESS FOR THE MANAGEMENT OF NO PLAY DATES

1. Schools are eligible to apply for one No Play Date per season. EISM will make best endeavours to cater for this when fixturing, by either fixturing a bye if possible, or in the case of two schools requesting the same No Play Date, fixturing them to play each other. However, there are no guarantees that No Play Date requests will be met due to a number of factors, i.e. fixtures with even numbered teams do not provide for a natural bye, multiple schools requesting the same No Play Date etc.
2. In the case where schools request more than one No Play Date in a season, it will be up to the school to reschedule on the subsequent date from Point 1 above.
3. When attempting to reschedule due to a second No Play Date, schools must manage these directly with their opposition school.
4. If the school is unable to reschedule the fixture for any reason, including availability of their opponent, then the game will be declared a Forfeit (with the exception of religious holidays).
5. Should a No Play Date be unable to be accommodated, and that No Play Date was requested for religious reasons, schools should attempt to reschedule in the first instance. If a reschedule is unable to be facilitated, both teams will be awarded a draw for that fixture.

CONDUCT OF WEEKLY SPORT cont'd

PROTOCOL FOR WHEN A SUSPECTED INELIGIBLE PLAYER HAS PARTICIPATED IN EISM SPORT

1. Schools are encouraged to engage in respectful conversation should a suspected ineligible player be preparing to play, however if a consensus cannot be reached in the moment, the fixture should go ahead with the player in question being allowed to participate.
2. If required, discussions regarding the legitimacy of the fixture should be continued after its completion, between the respective Heads of Sport or Principals only.
3. A school that suspects that an ineligible player has participated in an EISM sporting fixture, must inform the Executive Officer of the EISM in writing. The communication should come from the Principal of that school.
4. The Executive Officer will inform the EISM President, and will then investigate accordingly.
5. If it is established that an infraction has occurred, the opposition school will be awarded with the win for all fixtures that the ineligible player has participated in.
6. The EISM Board will be informed of the status of the ineligible player at the next Board Meeting.

Categories of Ineligible Player

CATEGORY	DESCRIPTION	PROTOCOL
Playing an Overage Player	A student participates in sport in a year level competition below that which they are enrolled in at the school	As above
Playing a Student that is not a Bonafide Student of the School	A student that is not enrolled in a particular school, competes in an EISM fixture representing that school. This also applies if a student is either a past or future student of the school, but is not actually enrolled in the school at the time of the fixture	As above
Playing in more than one game per week	A student plays in more than one EISM weekly sport fixture in a given week In this case, the first fixture that the student plays in in any given week is the eligible fixture. Any game after that, will be ruled as the student being ineligible for that particular fixture	As above
Gender Identity and Participation Policy	Where the school fails to enact their responsibilities under the EISM Gender Identity and Participation Policy At any point where the policy is enacted (ie mid season) and the student is ruled as eligible to play, they can begin playing in the next available fixture.	As above
Concussion Protocols	A student participates in sport whilst known by the student's own school to be in Concussion Protocols due to a concussive event of any nature	As above
Eligibility for Finals	As per the EISM Handbook, it is a requirement of schools to keep accurate records of all students that participate in EISM sporting contests each week. Students are eligible to play in finals if they have participated in at least 50% of fixtures for that sport throughout the season.	If it can be proven, the team forfeits the final in which the ineligible player participated NOTE: It should be noted that in the instance that a student is injured through the season, where they have remained a part of the team whilst injured, they should be considered eligible to play finals

CONDUCT OF WEEKLY SPORT cont'd

RESULTS

1. For all weekly sporting matches, both teams are to either enter or confirm their results in Clipboard Compete by 2pm on the Friday of the week the match was played.
2. Scores for the final round of sport (Round 7), scores must be entered by 11:30am on the day following the match, and ideally would be entered the same day as the match is played.
3. Unconfirmed results will be made official after 2pm Friday of the week the match was played, unless EISM are notified, in writing, of results in dispute or extenuating circumstances.
4. Any disputed results must be discussed prior to confirming results. Once a score is confirmed in Clipboard, it will be considered final.
5. For disputed results, Heads of Sport should communicate with their opposition school to resolve the issue. Where an agreement cannot be reached, schools must put their dispute in writing to the EISM Executive Officer prior to 2pm Friday of the week the match was played. The EISM Executive Officer will determine an outcome within 7 days of the disputed match.
6. Points are allocated as follows: Win/Bye – 4 points; Draw – 2 points; Loss – 0 points
7. Schools must indicate if a match was forfeited or cancelled due to weather, by updating the match status. 4 points are allocated to the non-forfeiting school, and heat or wash outs are allocated as 2 points to each team (if the match is unable to be rescheduled).
8. Percentage is not considered for ladder positions, and any equal ladder positions impacting on finals, are assigned based on the steps outlined under Conduct of Weekly Sport: Finals.
9. If a score/match status is missing after Round 7, neither team will receive points for the match, unless prior arrangements have been made with EISM.

FINALS

Qualification for Weekly Sport Finals.

1. The student must have played at least half of their games in the team that has qualified for a final. Playing a couple of games in an 'A' team to help, does not disqualify a player from playing in 'B' finals. Players are not to swap teams mid-season to strengthen a team with finals aspirations.
2. If a school has an 'A' & 'B' team from the same sport playing in finals, normal team selections that are used during the season would apply to that school.
3. In the case where a school challenges the qualification of a student for a final, Heads of Sport should be contacted to resolve the issue before play commences.
4. If requested, you must be able to justify your team selections to the Executive Officer.
5. Schools must have a written record of the number of times a student has played in each team, which can be presented to the Executive Officer upon request.

Completion of Weekly Sport Season

1. If games are postponed, they must be played at least one week prior to any finals to ensure that all ladders are completed by that time. This allows schools time to make proper arrangements before finals.

Finalists will be determined on a head-to-head basis

1. When two teams are tied for a place in the Semi-Finals, Grand Finals, or Declared Premiership (not including Yr 7 & 8 competitions) the team that won the match between those two schools will take the higher place on the ladder. If the schools have played twice, then an aggregate score of those two games is taken. If the schools have not played, or have had a tied result during the season, then the two tied teams will have their scores compared with the highest placed team that both schools have played.
2. If three or more teams are tied, all results from between those teams will be made into a mini ladder. The teams from this mini ladder are then placed back into the main ladder in the same order as the mini ladder.
 - Teams that did not play will be given a draw for that match.
 - Teams that have played twice will have an aggregate score.
 - Goals/Sets for and against will be used to break a deadlock in the mini ladder. If a school does not nominate how many games they won, it will be deemed to be "0".

CONDUCT OF WEEKLY SPORT cont'd

FINALS cont'd

Nominations for Grand Final Hosts

1. During each season, schools are given the opportunity to nominate to host Grand Finals. EISM reserve the right to allocate Grand Final hosts, where no nominations are received.
2. EISM are responsible for passing on all medallions once a host is nominated.
3. Schools are welcome to swap hosting duties, but the initial host is responsible for ensuring all medallions and trophies are in the correct location for the Grand Final, unless other arrangements have been made.
4. Current trophy holders should bring the trophy to the relevant Head of Sport meeting where Grand Final hosts are allocated, to pass on to the new host.

Duties of Grand Final Hosts

1. Host schools for Grand Finals need to arrange a venue, book all match officials, and have someone in place to run presentations post-match. Part of the duty is to ensure that the trophy is in place which may involve contact with the previous year's premier.
2. Costs of Grand Final venues and match officials are covered by EISM. Schools must have invoices made out to EISM by external parties, or invoice EISM for costs incurred, within a reasonable timeframe of the match occurring.

Instances where teams are unavailable to play Finals due to school-based clashes (i.e. camps etc)

1. The two teams that initially qualified for the final work together to reschedule the final for a date that suits both teams.
2. In instances where rescheduling is not possible, the team who is unavailable on the Grand Final date will forfeit their place to the next highest placed team according to ladder positions. If the next highest placed team is not available, the opportunity will be given to the next highest ranked team and so on.
3. Should this instance arise with regards to a Semi Final, the rescheduled match must be played within the same week as originally scheduled, and prior to the Grand Final date.

SPORTS REQUIRING PLAYER RANKINGS

There are some sports in EISM that require schools to rank their students and play against students from the other school of the same ranking. This is a partly subjective assessment, though there are times when students from within the same school can play off to determine the rankings.

Sports that require a rank:

- Badminton
- Table Tennis
- Tennis

Please note the following:

- Every effort should be made to have students accurately ranked
- On a week-to-week basis, there could be some slight adjustment to ranking
- Once a match has commenced, a student cannot drop their ranking. If a substitution is made, it is possible that you can play at a higher rank during that week's match.
- With all the of the sports listed above, you can substitute as many players as you wish between the singles and doubles matches. Those players that have played already cannot drop in the ranking when this happens. They can play at a higher rank.

MATCH OFFICIALS

Competent match officials are required in accordance with details in the EISM Handbook.

1. All match officials are to have a current 'Working With Children Check'. They are required to present this to the school/venue upon request.
2. All match officials must sign in when entering a school.
3. Match officials should be professionally attired so that they are clearly distinct from the playing group.
4. Match officials should be booked for a sufficient length of time, which allows a full match to be played if play starts at the latest permitted time of 1:45pm (or later if by prior arrangement).
5. Match officials are not to dictate the length of matches. Match length is for discussion between coaches and Heads of Sport only, and match officials requesting to leave early is not a valid reason to play only to the minimum match durations, provided play commences on time.
6. If a school chooses to use a coach (where allowed), the home school must supply the officiating coach, unless both schools agree on alternative arrangements.
7. For Year 7 & Year 8 matches, if you are unable to supply a paid match official, students may be used so long as they are competent in their knowledge of the rules, they are two year levels older than the age being officiated, and there is no visual link between the match official and the school.
8. It is incumbent on the schools to inform the match officials of the EISM rules that are relevant to each sport. All associated EISM rules are to be available to the match officials at the commencement of each match.
9. Match officials should only let a match commence when they are content that the match is being properly timed by reliable people using electronic or other suitable timing equipment, and the conditions are safe for play.
10. It is still the coach's prime responsibility to have their players play within the rules of the game, and to remove them from the match if in the opinion of the coach, the student is not playing within the spirit of the game.
11. At no time should match officials be left alone with students.
12. In the event of a match official who was booked, not arriving at a match, the following solutions should be considered, in order of priority listed below:
 1. Play - Both schools provide an umpire/coach to officiate the game.
 2. Play - Each school to officiate for one half, or if agreed, one school may officiate the whole game.
 3. No Game – re-match in Catch-up Round (if available)
 4. No Game - social match, share points.
 5. No Game - go home, share points.
13. If a school fails to book a match official, and no agreement can be reached in regard to a replacement official, the opposition Head of Sport is entitled to call a forfeit if the match is unable to go ahead. In this instance, where safe to do so, a friendly match should still be played.

MATCH OFFICIALS cont'd

The following guidelines for booking match officials should be observed, to ensure the correct number of match officials are present for each match.

The home school is to organise and pay for the match official, unless otherwise stated.

CENTRAL MATCH OFFICIALS 2026		
SPORT	YEAR LEVEL	MATCH OFFICIALS
5-A-Side Soccer	All Year Levels	Provided by Venue (except at Dandenong Soccer 5s – 1 ref required)
Badminton	All Year Levels	Self-Umpired
Basketball	Year 7 & 8	Minimum 1 Qualified Referee (Preferably 2 Qualified Referees)
	Year 9	2 Qualified Referees
	Senior	
Football	Year 7 & 8	1 Qualified Field Umpire 1 Goal Umpire per School (student or staff, preferably staff)
	Year 9	2 Qualified Field Umpires 1 Goal Umpire per School (student or staff, preferably staff)
	Senior	
Hockey - Modified	Year 7	1 Qualified Umpire
Hockey	Year 8	2 Qualified Umpires
	Year 9	
	Senior	
Indoor Cricket	All Year Levels	Provided by Venue *Schools notified if unavailable
Indoor Soccer	All Year Levels	Provided by Venue *Schools notified if unavailable
Lawn Bowls	All Year Levels	Self-Umpired
Netball	All Year Levels	2 Qualified Umpires
Soccer	All Year Levels	1 Qualified Referee 1 Linesman per school (student or staff)
Softball	All Year Levels	1 Qualified Umpire or Coach
Table Tennis	All Year Levels	Self-Umpired
Tennis	All Year Levels	Self-Umpired
Touch Football	All Year Levels	1 Qualified Referee
Twenty/20 Cricket	Senior	1 Qualified Umpire or Coach per school
Ultimate Frisbee	All Year Levels	Self-Umpired
Volleyball	All Year Levels	1 Qualified Referee or Coach

MATCH OFFICIALS cont'd

The following guidelines for booking match officials should be observed, to ensure the correct number of match officials are present for each match.

The home school is to organise and pay for the match official unless, otherwise stated.

NORTH EASTERN AND SOUTH EASTERN MATCH OFFICIALS 2026		
SPORT	YEAR LEVEL	MATCH OFFICIALS
5-A-Side Soccer	All Year Levels	Provided by Venue (except at Dandenong Soccer 5s – 1 ref required)
Badminton	All Year Levels	Self-Umpired
Basketball	Year 7	Minimum 1 Qualified Referee (Preferably 2 Qualified Umpires)
	Year 8/9	2 Qualified Referees
	Senior	
Football	Year 7	1 Qualified Umpire 1 Goal Umpire per School (student or staff)
	Year 8/9	2 Qualified Umpires
	Senior	1 Goal Umpire per School (student or staff)
Hockey	Year 7	Minimum 1 Qualified Umpire (Preferably 2 Qualified Umpires)
	Year 8/9	2 Qualified Umpires
	Senior	
Indoor Cricket	All Year Levels	Provided by Venue *Schools notified if unavailable
Indoor Soccer	All Year Levels	Provided by Venue *Schools notified if unavailable
Netball	All Year Levels	2 Qualified Umpires
Soccer	All Year Levels	1 Qualified Referee 1 Linesman per school (student or staff)
Softball	All Year Levels	1 Qualified Umpire or Coach
Table Tennis	All Year Levels	Self-Umpired
Tennis	All Year Levels	Self-Umpired
Touch Football	All Year Levels	1 Qualified Referee
Ultimate Frisbee	All Year Levels	Self-Umpired
Volleyball	All Year Levels	1 Qualified Referee or Coach

PRE-MATCH PROTOCOL

All Schools when attending an EISM fixtured match should have access to the following documentation:-

- 1) EISM Handbook / website (or extracts pertaining to the 'Conduct of Weekly Sport')
- 2) Venue Overview Report (EISM external venues).

When visiting other EISM Member Schools, refer to them for relevant information.

- 3) Risk Management Matrix (Indoor Sport/Outdoor Sport)
- 4) Critical Incident Management Plan

ON ARRIVAL:

Before a match can begin, the Home team is responsible for completing the Appendix III 'Home Team Match Day Checklist' to ensure student safety and minimum venue requirements for EISM sport are met. These should be filed at the appropriate school for the duration of that season.

Upon arrival of the Visiting team at the venue, the home coach is to introduce themselves to the opposition coach. An Attendance Register of the visiting School to be provided upon request. At this point any special arrangements that need to be discussed can be addressed. (NOTE: it is the duty of the Heads of Sport to make these arrangements prior to the day and the coaches should follow these wherever possible.) If there is a special circumstance that has happened, any change to the original time frame can be allowed, provided it meets the minimum match durations. Schools should also agree to when 'time' will be called in sports without a timed clock.

On entering the field of play:

Before each match commences, teams from both schools are to line up facing each other. This should preferably be on the playing area where the match is to be played.

1. The Home Coach should then welcome the Visiting Team.
2. Reminders on behalf of the EISM: -
 - Play hard but fair and always accept the Umpires decision.
 - All players must be dressed in the appropriate uniform. Any infractions should now be addressed, confirm uniforms have been checked on the EISM results sheet.

If players can find the correct items of uniform, they can then be part of the EISM Competition. If they are unable to comply, they are not permitted to play. Coaches should first take responsibility for the uniforms of the Students from their own school. If the minimum team numbers do not have the correct attire, a forfeit is given. A social match between the teams can be played.
 - All visiting staff to display appropriate identification (eg. VIT, School ID, WWC Check).
3. Players are to shake hands with the opposition player who is standing opposite them. This is a way of the players introducing themselves to each other.
4. Coaches are to be mindful of the collegial nature of school sport. The positive spirit of the EISM is always to be encouraged by both coaches and students.

EISM MATCH REGULATIONS – 5-A-SIDE SOCCER

TECHNICAL REQUIREMENTS

Team Size	On Court	Minimum - Minimum number must be met to constitute a scored match
	5 players	3 players
Equipment	Size 5 Soccer Ball	
Match Officials	Provided by the venue (except at Dandenong Soccer 5s – 1 ref required)	
Uniform Requirements	All Players	<p>Compulsory School Issued Uniform:</p> <ul style="list-style-type: none"> - Short or Long-Sleeved Playing Top or Polo (numbered if possible) - Long Socks - Shorts <p>Compulsory Protective Equipment</p> <ul style="list-style-type: none"> - Shin Guards <p>Recommended Protective Equipment</p> <ul style="list-style-type: none"> - Mouth Guard
	Goalie	<p>Goalie Compulsory Playing Equipment:</p> <ul style="list-style-type: none"> - Goalkeeping Gloves - Unique Coloured Playing Top or Bib/Vest
Expected Match Duration	2 x 20-minute halves	2-minute half time
Minimum Match Duration	2 x 15-minute halves	2-minute half time
Mercy Rule	Once a team is up by 8 goals remove one player. If you are winning comfortably, give fringe players a turn.	
Incomplete Matches (emergencies & adverse weather)	If 75% or more of match time has been played, the winner shall be the team who is winning when time is stopped. If 75% of the match has not been played, it is a draw.	
Tied Grand Final	Teams are to play 5 minutes each way, golden goal applies. If still tied, a shared premiership is awarded.	

MATCH RULES

SFaS.1.	All games to be played in accordance with the current rules of KRFC unless contra indicated below.
SFaS.2.	<p>Fouls:</p> <p>a) You may not tackle from behind. You can challenge from the side, as long as no contact is made during the challenge.</p> <p>b) After the 5th foul in each half, the defending team is not permitted to set up a player 'wall'. All players must be 2 meter either side of the ball. Players cannot join the play until the ball has hit a structural wall, Keeper or another player outside the 3 metre zone.</p> <p>c) If a player falls on the ground, they cannot play the ball until they regain their feet.</p> <p>d) Players cannot jump into, hold, or obstruct other players, or push them into the wall.</p> <p>e) No slide tackles.</p> <p>f) Any foul by a defender in the Keeper's circle will result in a penalty.</p> <p>g) Deliberate fouls in the attacking half can also result in a penalty.</p>
SFaS.3.	All free kicks are indirect. Players must wait for the whistle to restart the game.
SFaS.4.	Free kicks must be taken within 5 seconds of the whistle or the free is reversed.
SFaS.5.	If the Keeper steps outside his area, a free kick is awarded at the edge where the offence occurred.
SFaS.6.	Hands cannot be placed on the side rails whilst playing the ball, otherwise a freekick is awarded.
SFaS.7.	Deliberate time wasting in the corner is a free kick to the opposition.
SFaS.8.	The Keeper has 5 seconds from controlling the ball to release it.
SFaS.9.	The Keeper may not throw or kick the ball over the ½ way line.
SFaS.10.	It is a card offence if the Keeper deliberately leaves his area. If the ball is outside his area, he may retrieve it with hands or feet so long as neither touches the ground outside his area.
SFaS.11.	If the Keeper catches the ball, it must be released by hand only.
SFaS.12.	Inform the referee and ensure the player has left the playing area prior to interchanging.
SFaS.13.	If ball lands behind goals, it is goalkeepers' possession.

EISM MATCH REGULATIONS - BADMINTON

TECHNICAL REQUIREMENTS

Team Size	On Court	Minimum - Minimum number must be met to constitute a scored match		
	8 players	<p>Schools unable to field 8 players shall forfeit those sets that are not played. 2 games and 30 points (singles) or 2 games and 42 points (doubles) to be awarded to the opposition for each match not played.</p> <p>If 50% or more of the matches are forfeited, the entire fixture will be considered a forfeit.</p>		
Equipment	The shuttlecock is to be nylon, red-banded, with either white or yellow nylon feathers. (The yellow Carlton T800 are a good example).			
Courts	Minimum 3 courts, ideally 4 courts should be used on rotation.			
Match Officials	Self-Umpired; Players to assist with umpiring and scoring other matches			
Uniform Requirements	All Players	Compulsory School Issued Uniform:		
		<ul style="list-style-type: none"> - Short or Long-Sleeved Playing Top or Polo - Shorts or Pants 		
Expected Match Duration	Singles	Best of 3 games up to 15	Doubles	Best of 3 games up to 21
Minimum Match Duration	Singles	Best of 3 games up to 11	Doubles	Best of 3 games up to 15
	Minimum 50 minutes of match play			
Mercy Rule	There is no specific mercy rule for this sport. If you are winning comfortably, encourage students to keep rallies going and not hit big winners.			
Incomplete Matches (emergencies & adverse weather)	For a winner to be awarded, 50% of the match must be completed before a result can be given (e.g. 6 out of 12 sets). If 50% of the match has not been completed, it is a draw.			
Tied Grand Final	In the case of a Grand Final being tied in sets, games, and points, the premier will be the team that won the 'A & B' doubles match.			

MATCH RULES

Bm.1.	All games to be played in accordance with the current rules of the Badminton Victoria Inc. unless contra indicated below.
Bm.2.	Each team is to consist of 8 players, ranked according to ability. If you are a player short, then the 8 th ranking is the one to drop off first, then 7 th etc.
Bm.3.	<p>Singles are played as best of three games up to 15. Doubles are played as best of three games up to 21.</p> <p>In the event of a set not being completed, the winner is to be determined by games with a minimum point score of 11 for singles and 15 for doubles counting as a completed game.</p>
Bm.4.	Students should stay as the same ranked player in doubles and singles. If there is a substitution, then players playing their second match could be ranked higher to allow the new player to be ranked 8 th . Players are not to drop down the rankings for their second match.
Bm.5.	The home school has choice of end. The away school has first serve.
Bm.6.	Rally point is to be played. Every serve scores a point.
Bm.7.	When the server's score is even, you serve from the right side of the court. When the server's score is odd, you serve from the left side.
Bm.8.	If the receiving side wins the rally, the receiving side wins a point and the serve.
Bm.9.	In doubles, players do not change their respective service courts until they win a point when their team is serving.
Bm.10.	<p>The winner shall be the team who has won the most sets.</p> <p>If sets are drawn, the winner shall be the team who has won the most games.</p> <p>If games are drawn, the winner shall be the team who has won the most points.</p> <p>If points are tied, the match will be deemed a draw (except in Grand Finals *see Tied Grand Final).</p>

EISM MATCH REGULATIONS - BASKETBALL

TECHNICAL REQUIREMENTS

Team Size	On Court	Minimum - Minimum number must be met to constitute a scored match		
	5 players	4 players on court to commence a match 2 players on court to continue a match		
Equipment	All Girls & Year 7 Boys	Size 6 Basketball	Year 8-12 Boys	Size 7 Basketball
Match Officials	Year 7 & 8	Minimum 1 Referee	Year (8)9 & Senior	2 Referees
Uniform Requirements	All Players	Compulsory School Issued Uniform: – Numbered Playing Singlet – Shorts		
Expected Match Duration	2 x 20-minute halves	2-minute half time *can be longer if time permits		
Minimum Match Duration	2 x 15-minute halves	2-minute half time		
Mercy Rule	When the score difference reaches 20 points, the leading team is to defend from the half court. If the score extends to 50 points, then the leading team is to defend from the 3-point arc. The defense may not extend past that point. The clock does not stop for any reason if the mercy rule is in effect.			
Incomplete Matches (emergencies & adverse weather)	If 75% or more of match time has been played, the winner shall be the team who is winning when time is stopped. If 75% of the match has not been played, it is a draw.			
Tied Grand Final	An extra 3 minutes is to be played. If still tied at the end of this time, an additional 3 minutes is to be played. 1 timeout per extra time is allowed. If still tied, a shared premiership is awarded.			

MATCH RULES

Bb.1.	All games to be played in accordance with the current rules of the FIBA unless contra indicated below.
Bb.2.	The clock will stop for: – All time outs (2 per team per half) – For all whistles in the last minute of the first half – For all whistles in the last 3 minutes of the second half
Bb.3.	Each school is to supply a scorer and timekeeper. Scoresheets are to reflect two halves.
Bb.4.	After the initial jump ball, the possession arrow is implemented. It is recommended that all schools provide some type of mechanism to dictate possession.
Bb.5.	Teams are allowed 8 seconds to move the ball across the half court line.
Bb.6.	After a technical or un-sportsman like foul, there is to be 2 shots and possession at half court.
Bb.7.	When a tech foul is awarded, the player will spend 5 minutes on the bench.

EISM MATCH REGULATIONS - FOOTBALL

TECHNICAL REQUIREMENTS

Team Size		On Field	Minimum - Minimum number must be met to constitute a scored match		
	12s	12 players	8 players		
	15s	15 players	9 players		
Equipment	All Girls & Year 7 & 8 Boys		Size 4 Football	Year (8)9-12 Boys	Size 5 Football
Match Officials	Year 7 & 8	1 Field Umpire		Year (8)9 & Senior	2 Field Umpires
	1 Goal Umpire per School (student or staff, preferably staff)				
Uniform Requirements	All Players	Compulsory School Issued Uniform: <ul style="list-style-type: none"> - Numbered Playing Top - Shorts or Football Shorts of a uniform colour - Long Socks Compulsory Protective Equipment <ul style="list-style-type: none"> - Mouth Guard Recommended Equipment <ul style="list-style-type: none"> - Football Boots 			
Expected Match Duration		4 x 12-minute quarters		3-minute breaks *can be longer if time permits	
Minimum Match Duration	4 x 10-minute quarters		3-minute breaks		
Mercy Rule	If a school is 60 points in front, each time the leading school kicks a score, the team that is losing has a free kick from the centre of the ground, for the remainder of the quarter. If the margin is less than 60 points at the start of the next quarter, the mercy rule is deactivated until the 60-point margin is reached again.				
Incomplete Matches (emergencies & adverse weather)	If 75% or more of match time has been played, the winner shall be the team who is winning when time is stopped. If 75% of the match has not been played, it is a draw.				
Tied Grand Final	Teams are to play an extra 5 minutes each way. If still tied, a shared premiership is awarded.				

MATCH RULES

Fb.1.	All games to be played in accordance with the current rules of the AFL unless contra indicated below.
Fb.2.	No 'time on' added except in exceptional cases, such as 'blood rule' or injury requiring a stretcher.
Fb.3.	The maximum number of players on the field can be increased or decreased if both coaches are in agreement. Where agreement cannot be reached, a team is entitled to play with the official number of players listed on the fixture/EISM Handbook, regardless of their opposition's team size.
Fb.4.	Each team must provide at least two staff, including a competent first aider.
Fb.5.	Each school must provide a 'goal umpire', with flags. No spectators are allowed behind the goals between the point posts. Goal umpires must check scores at the end of each quarter.
Fb.6.	The timekeeper should have a means, other than a whistle, to indicate the end of each quarter.
Fb.7.	Goal squares and boundary lines are to be clearly marked.
Fb.8.	A field umpire may send a player off if deemed appropriate.
Fb.9.	Runners shall be dressed appropriately and be identified to the central umpire.
Fb.10.	A field umpire may declare a goal umpire's decision incorrect and has the power to overrule it after consultation with the goal umpire. The field umpire's decision is final.
Fb.11.	The 5-5-5 system (Centre line: 3 onballers/2 wings) is in place for each centre bounce for the 15-A-Side format and the 4-4-4 system for 12-A-Side for each centre bounce.
Fb.12.	When the ball goes out of bounds a free kick is awarded against the player to last touch the ball. A disputed ball out of bounds shall be brought in 10m from the boundary line for a ball-up.
Fb.13.	Any penalties given by the umpire are to be 25m only. If the umpire deems a tackle to be dangerous (sling or driving tackle), a free kick and 25m penalty to be awarded. If the same player repeats this type of tackle, they can be sent off.
Fb.14.	Grounds should have a technical area that coaches and interchange need to stay within.

EISM MATCH REGULATIONS - HOCKEY

TECHNICAL REQUIREMENTS

Team Size	On Field 11 players	Minimum - Minimum number must be met to constitute a scored match 8 players		
Equipment	Regulation Hockey Match Ball			
Match Officials	Year 7	1 Umpire	Year 8, 9 & Senior	2 Umpires
Uniform Requirements	All Field Players	Compulsory School Issued Uniform: <ul style="list-style-type: none"> - Short-Sleeved Playing Top or Polo (numbered if possible) - Long Socks - Shorts Compulsory Protective Equipment <ul style="list-style-type: none"> - Mouth Guard - Shin Guards - Face Masks (for short corners only) 		
	Goalie Only	<ul style="list-style-type: none"> - Kickers - Gloves - Pads - Chest Guard and Box/Pelvic Protector - Helmet with Face and Throat Protector 		
Expected Match Duration	2 x 25-minute halves	2-minute half time *can be longer if time permits		
Minimum Match Duration	2 x 20-minute halves	2-minute half time		
Mercy Rule	There is no specific Mercy Rule in this sport. If you are winning comfortably, give fringe players a turn.			
Incomplete Matches (emergencies & adverse weather)	If 75% or more of match time has been played, the winner shall be the team who is winning when time is stopped. If 75% of the match has not been played, it is a draw.			
Tied Grand Final	Teams are to play 5 minutes each way, golden goal applies. If still tied, a shared premiership is awarded.			

MATCH RULES

Hc.1.	All games to be played in accordance with Hockey Victoria Junior rules unless contra indicated below.
Hc.2.	All matches are to be played on synthetic surfaces.
Hc.3.	Each team is permitted an unrestricted number of interchanges. Players must be exchanged at the halfway line – umpires are not required to be notified.
Hc.4.	For all free hits, defending players must be 5m from the ball when it is played. When taking a free hit inside the attacking 23m line, both teams need to be 5m from the ball.
Hc.5.	Penalty Corner: Only the Goalkeeper and 4 defenders wearing approved face masks may stand behind the goal line. All other players must stand beyond the halfway line until the corner is taken.
Hc.6.	The wearing of facemasks during general play is prohibited.
Hc.7.	If the first shot at goal from a penalty corner is a hit, it must pass the goal line at less than 460mm.
Hc.8.	A second shot at goal from a penalty corner that is raised will be a goal if it is deemed not dangerous by the umpire. i.e. one person vs goalkeeper or an open goal.
Hc.9.	In general field play, hits at goal that hit the backboard are allowed. Hits at goal that hit above the backboard, but are not dangerous according to the discretion of the umpire, will be allowed. Reverse stick hits/sweeps at goal along the ground are permitted.
Hc.10.	In general field play, a hit or flick at close range going above kneecap height is deemed dangerous. If a player needs to take evasive action, that is deemed dangerous as well.
Hc.11.	The use of a tomahawk to be used when hitting the ball, and kicking backs are not permitted.
Hc.12.	When a 'free hit' has been awarded a Self-Pass may be taken. If a Self-Pass has been taken before the defender is back 5m, the defender must not engage in the play until the ball has moved 5m away.
Hc.13.	Free Hits inside the 23m line cannot be hit directly into the D unless the ball has been dribbled/passed the required 5 metres before entering the D.
Hc.14.	There is no provision for own goals. An attacking player must hit the ball inside the D.
Hc.15.	When defending a corner, a defender who crosses the goal line before the push is made will need to go beyond the centre line and cannot be replaced. The penalty corner is taken again.

EISM MATCH REGULATIONS – HOCKEY MODIFIED

TECHNICAL REQUIREMENTS

Team Size	On Field	Minimum - Minimum number must be met to constitute a scored match
	7 players	5 players
Equipment	2 x Regulation Hockey Match Ball (Home team to provide) 4 x Same Coloured Cones & 2 x Place Markers (Both teams to provide)	
Match Officials	Year 7	1 Umpire
Uniform Requirements	All Players	Compulsory School Issued Uniform: <ul style="list-style-type: none"> - Short-Sleeved Playing Top or Polo (numbered if possible) - Long Socks - Shorts Compulsory Protective Equipment <ul style="list-style-type: none"> - Mouth Guard - Shin Guards
Expected Match Duration	2 x 20-minute halves	2-minute half time *can be longer if time permits
Minimum Match Duration	2 x 15-minute halves	2-minute half time
Mercy Rule	There is no specific Mercy Rule in this sport. If you are winning comfortably, give fringe players a turn.	
Incomplete Matches (emergencies & adverse weather)	If 75% or more of match time has been played, the winner shall be the team who is winning when time is stopped. If 75% of the match has not been played, it is a draw.	
Tied Grand Final	Teams are to play 5 minutes each way, golden goal applies. If still tied, a shared premiership is awarded.	

MATCH RULES

Hm.1.	Games to be played as play on to advantage per EISM Hockey Match Regulations unless otherwise stated.
Hm.2.	Modified Hockey is played on a half size Hockey field (coaches to remain on sidelines). Players should be aware of loose/out of bounds ball from adjoining game – roll ball off field.
Hm.3.	There is no goal keeper in Modified Hockey.
Hm.4.	The home team should set up four cones for goals, and two place markers for the 5m shooting zone. The shooting zone place marker to be placed 5m directly in front of the goal on the quarter line. Goal cones are to be 3m apart, equally distanced across the quarter line markings.
Hm.5.	In the event that a team starts with less than maximum team numbers (7), opposition teams with maximum team numbers are encouraged to equalise number of players, but are not required to.
Hm.6.	There are no short corners or penalty corners.
Hm.7.	For any breach by a defender (within the 5m shooting zone), the attacking free hit (push) is to be taken from the breaching point, in a straight line to the 5m attacking line. Both defending and attacking players must be at least 3m from the free hit location.
Hm.8.	For any breach by a defender in open play, the attacking team will be awarded a penalty at the point where the breach occurred. Defenders must be at least 3m from the point of breach.
Hm.9.	Free Hits from the 5m line must be dribbled at least 3m before attempting to score. Both Defenders and Attacking players must be at least 3m from where the Free Hit is taken.
Hm.10.	The 5m shooting zone becomes the shooting circle in the modified format.
Hm.11.	Pushes only are permitted. Players will not be permitted to: <ul style="list-style-type: none"> - Raise the stick above the waist height - Raise the ball above knee height (subject to umpire discretion) - Use rough or dangerous play - Use scoops, flicks and tomahawks
Hm.12.	If the ball crosses the backline and is touched by a defending player, a long corner is awarded. The free hit is immediately taken in a straight line from where the ball crossed the back line. Both defending and attacking players must be at least 3m from the free hit.

EISM MATCH REGULATIONS – INDOOR CRICKET

TECHNICAL REQUIREMENTS

Team Size	On Court	Minimum - Minimum number must be met to constitute a scored match
	8 players	6 players
Equipment	Equipment and scoresheets are provided by the venue	
Match Officials	Provided by the venue	
Uniform Requirements	All Players	Compulsory School Issued Uniform: – Short or Long-Sleeved Playing Top or Polo – Shorts or Pants
	Batters & Wicketkeeper	Compulsory Protective Equipment – Cotton Batting/Wicketkeeping Gloves Recommended Protective Equipment – Box/Pelvic Protector
Expected Match Duration	1 x 16 over innings per team	Immediate change of ends
Minimum Match Duration	1 x 8 over innings per team – 50 minutes	Immediate change of ends
Mercy Rule	There is no specific mercy rule for this sport. If you are winning comfortably, encourage students to keep rallies going and not hit big winners.	
Incomplete Matches (emergencies & adverse weather)	Any incomplete match is deemed a draw.	
Tied Grand Final	A 'Super Over' will be bowled by each team. If scores are still level after the 'Super Over', a shared premiership is awarded.	

MATCH RULES

InC.1.	All games to be played in accordance with the current rules of the ICC unless contra indicated below.
InC.2.	Each match consists of one innings per team. Each innings consists of 16 overs of 6 balls.
InC.3.	Each team consists of 4 batting pairs who bat for the duration of the 4 overs. Each member of the fielding team is to bowl 2 overs. Fielders may substitute.
InC.4.	If a team is a player short, the opposition coach nominates who bowls a second time in the last group of 4 overs. One or both (as needed) of the lowest scoring batting pair will bat again.
InC.5.	A maximum of 4 players can field in either half of the court, until the ball is released.
InC.6.	Only the wicketkeeper is allowed in the wicketkeeper's area before the ball is played at by the batsman, and is considered another fielder. They must take position with both feet inside the designated area.
InC.7.	The ball is 'live' once the umpire calls 'play'. The ball remains 'live' throughout the over until the umpire calls 'dead ball', 'over', 'time out' or a wicket falls.
InC.8.	Runs are scored by: – Running between the batting creases (for a net hit to count, batters must also complete a run). – Hitting the side net (1 run); Hitting the side net beyond the running crease (2 runs); Hitting the back net (4 runs); Hitting the back net on the full (6 runs).
InC.9.	Umpire calls of 'no ball', 'wide' or 'leg side' are worth 2 runs to the batting team.
InC.10.	Should the score remain unchanged after two deliveries of the one batting partnership, the umpire will call 'Third Ball', meaning the score must change next ball or the batter will be given out.
InC.11.	A no ball will be called if: An underarm bowl bounces twice, field restrictions are broken, the ball doesn't land on the pitch, the ball passes over the batters' shoulder when in a normal batting stance, or the bowler fails to inform the umpire they are bowling from a different side of the wicket.
InC.12.	A wide is when the ball passes on the offside, outside the intersection of the batting crease and the edge of the pitch. A legside wide is called when the ball passes outside the batting crease and the leg sideline. It is not a wide if it contacts the batter.
InC.13.	A batter is out and loses 5 runs if bowled, caught, stumped, LBW, hit wicket, 'Mankad' (after a warning) or runout, or if the umpire thinks a batter deliberately interferes with the ball while in play.
InC.14.	A catch may be taken off all boundary netting, except a direct hit on the full to the 6 net.
InC.15.	Bowlers can bowl a ball underarm if they have had 2 unsuccessful attempts to bowl overarm. The first bounce must land over the 2/3 line marked on the pitch and cannot bounce more than twice before reaching the batter, otherwise a no ball is called.

EISM MATCH REGULATIONS – INDOOR SOCCER

TECHNICAL REQUIREMENTS

Team Size	On Court	Minimum - Minimum number must be met to constitute a scored match
	5 players	3 players
Equipment	Size 4 Futsal Ball	
Match Officials	Provided by the venue	
Uniform Requirements	All Players	<p>Compulsory School Issued Uniform:</p> <ul style="list-style-type: none"> - Short or Long-Sleeved Playing Top or Polo (numbered if possible) - Long Socks - Shorts <p>Compulsory Protective Equipment</p> <ul style="list-style-type: none"> - Shin Guards <p>Recommended Protective Equipment</p> <ul style="list-style-type: none"> - Mouth Guard
	Goalie	<p>Goalie Compulsory Playing Equipment:</p> <ul style="list-style-type: none"> - Goalkeeping Gloves - Unique Coloured Playing Top or Bib/Vest
Expected Match Duration	2 x 20-minute halves	2-minute half time
Minimum Match Duration	2 x 15-minute halves	2-minute half time
Mercy Rule	Once a team is up by 8 goals remove one player. If you are winning comfortably, give fringe players a turn.	
Incomplete Matches (emergencies & adverse weather)	If 75% or more of match time has been played, the winner shall be the team who is winning when time is stopped. If 75% of the match has not been played, it is a draw.	
Tied Grand Final	Teams are to play 5 minutes each way, golden goal applies. If still tied, a shared premiership is awarded.	

MATCH REGULATIONS

InS.1.	Players are not permitted to wear any footwear that is not deemed to be a sports shoe.
InS.2.	The clock will not be stopped during a game, except in the event of a serious injury.
InS.3.	The half is deemed to be over as soon as the referee hears the buzzer.
InS.4.	<p>Matches are controlled by a referee who has full authority to enforce the rules of the game. This includes:</p> <ol style="list-style-type: none"> a) Ensuring that players' equipment and uniform conform to the rules. b) Acting as a timekeeper and keeping a record of the match c) Stopping, suspending or terminating the match at his discretion for breach of rules or injury. d) Taking disciplinary action against players guilty of cautionable and send off offences. The referee is not obliged to take action immediately, but must do so at the next stoppage in play. e) Referees to start the clock for the second half, regardless of whether teams are ready.
InS.5.	<p>To make a substitution, the following conditions must be observed, and the referee informed:</p> <ol style="list-style-type: none"> a) Your goalkeeper has possession of the ball. b) A player has a genuine injury. c) A goal is scored d) At any other time when play has been stopped by the referee. e) Substitutions will not be allowed in the last 3 mins of each half, unless a player is genuinely injured.
InS.6.	<p>Free Kicks/Penalties:</p> <ol style="list-style-type: none"> a) Once a keeper releases the ball outside the 'D', they can't regain possession directly back from the same player on his team. A free kick is awarded where the infringement occurred. b) A player may not deliberately hold the next, jump into the, or use them to 'pin' players. c) If a player is repeatedly found guilty of net abuse, a yellow card will be issued. d) Once a team has conceded 6 free kicks in a half, the team has the option of a direct shot on goal. No players, except the keeper, may stand between the ball and their goal until the ball is in play. e) Penalty given if the goalkeeper keeps possession of the ball for longer than five seconds

EISM MATCH REGULATIONS - NETBALL

TECHNICAL REQUIREMENTS

Team Size	On Court	Minimum - Minimum number must be met to constitute a scored match
	7 players	5 players
Equipment	Size 5 Netball	
Match Officials	2 Umpires	
Uniform Requirements	All Players	Compulsory School Issued Uniform: <ul style="list-style-type: none"> - Netball Dress or Short-Sleeved Playing Top or Polo with - Shorts or Skirts - Identical Positional Bibs
Expected Match Duration	4 x 12-minute quarters	2-minute breaks *can be longer if time permits
Minimum Match Duration	4 x 10-minute quarters	2-minute breaks
Mercy Rule	Once a team is 20 goals or more in front, the losing team is to take all centre passes until they get to within 20 goals.	
Incomplete Matches (emergencies & adverse weather)	If 75% or more of match time has been played, the winner shall be the team who is winning when time is stopped. If 75% of the match has not been played, it is a draw.	
Tied Grand Final	An extra 5 minutes is to be played. If still tied at the end of this time, an additional 5 minutes is to be played. If still tied, a shared premiership is awarded.	

MATCH RULES

Nb.1.	All games to be played in accordance with the current rules of Netball Australia unless contra indicated below.
Nb.2.	All players must wear identical bibs clearly showing their playing position
Nb.3.	At the beginning of the game all nails to be checked before players take the court.
Nb.4.	The match can be played inside or outside as determined by the host school.
Nb.5.	Unlimited substitutions may be made during a game. Substitutions must be made between a goal and centre pass, and umpires must be notified. The centre pass will wait until substitutions are made; however, if an umpire deems that a substitution is taking too long, a delaying play infringement will be awarded to the opposition. Substitutions cannot be made in the last two minutes of each quarter. Substitutions can involve an unlimited number of players.

EISM MATCH REGULATIONS – SOCCER

TECHNICAL REQUIREMENTS

Team Size	On Field	Minimum - Minimum number must be met to constitute a scored match		
	11 players	7 players		
Equipment	Year 7 Girls	Size 4 Soccer Ball	Year 8-12 Girls & All Boys	Size 5 Soccer Ball
Match Officials	1 Referee	Each school to provide a competent linesperson		
Uniform Requirements	All Players	Compulsory School Issued Uniform: <ul style="list-style-type: none"> - Short or Long-Sleeved Playing Top or Polo (numbered if possible) - Long Socks - Shorts 		
		Compulsory & Optional Protective Equipment <ul style="list-style-type: none"> - Mouth Guard (optional) - Shin Guards (compulsory) 		
	Goalie Only	Goalie Compulsory Playing Equipment: <ul style="list-style-type: none"> - Goalkeeping Gloves - Unique Coloured Playing Top 		
Expected Match Duration	2 x 20-minute halves	2-minute half time *can be longer if time permits		
Minimum Match Duration	2 x 15-minute halves	2-minute half time		
Mercy Rule	Once a school is 7 goals up, to score a goal you must either: <ul style="list-style-type: none"> - Kick the ball from outside the penalty area - Head the ball if you are inside the penalty area. 			
Incomplete Matches (emergencies & adverse weather)	If 75% or more of match time has been played, the winner shall be the team who is winning when time is stopped. If 75% of the match has not been played, it is a draw.			
Tied Grand Final	Teams are to play 5 minutes each way. If still tied, a shared premiership is awarded.			

MATCH RULES

So.1.	All games to be played in accordance with the current rules of FIFA unless contra indicated below.
So.2.	No 'time on' shall be played, but 'injury time' shall be added by the referee when necessary.
So.3.	Grounds must be marked clearly and accurately and should include corner flags and goal nets. The penalty area, goal area and centre circle should not be scaled down on smaller grounds. Goals must always be eight yards by eight feet (7m x 2.5m)
So.4.	Any player sent from the field by the referee with a red card cannot be replaced . Players who receive a red card will be eligible to play in the following match, unless the incident is such that it requires further investigation and discipline, to be initiated by Heads of Sport.
So.5.	Unlimited interchange is permitted. Before the interchange is made, the referee is to be notified and the change made in a break of play.
So.6.	Boys and Girls to play normal FIFA offside rule. Year 7 Girls to play no offside rule.
So.7.	Girls Soccer - common sense to apply in relation to handball. N.B. do not penalise the player if she protects her chest by using her arms.
So.8.	Anyone using moveable soccer goals in schools must be supervised when using the goals and not be permitted to hang or swing from them at any time.

EISM MATCH REGULATIONS – SOFTBALL

TECHNICAL REQUIREMENTS

Team Size	On Field	Minimum - Minimum number must be met to constitute a scored match		
	9 players	6 players		
Ball	Year 7 & 8/9	11" Soft Softball	Year 9 & Senior	12" Yellow Leather Softball
Match Officials	1 Umpire or Coach			
Uniform Requirements	All Players	Compulsory School Issued Uniform: <ul style="list-style-type: none"> - Short or Long-Sleeved Playing Top or Polo - Shorts or Pants 		
	Batters	Compulsory Protective Equipment <ul style="list-style-type: none"> - Batting Helmet with Ear Protection 		
	Catcher	Compulsory Protective Equipment <ul style="list-style-type: none"> - Chest Protector - Gloves & Leg Guards - Helmet with Full Face and Throat Protection 		
Expected Match Duration	Agreed upon arrival			
Minimum Match Duration	50 minutes			
Mercy Rule	Teams are required to change the pitcher once they are 15 runs in front.			
Incomplete Matches (emergencies & adverse weather)	Each school must complete two innings for a result to be achieved.			
Tied Grand Final	The game continues until a school wins. If a school has time constraints, these need to be conveyed to the umpire at the completion of normal time. If the scores are tied at the end of extra time, a shared premiership is awarded.			

MATCH RULES

Sb.1.	All games to be played in accordance with the current rules of the Softball Australia, unless contra indicated below.
Sb.2.	'Time' must be decided before the match starts, ensuring minimum match durations are met.
Sb.3.	The game will end at 'time' and scores taken back to even innings. In an incomplete innings, if the team batting second gets in front, the score stands.
Sb.4.	The batting team can score a maximum of 7 runs per inning after which it is side away.
Sb.5.	The batting team can declare its innings at any time.
Sb.6.	After batting, a catcher can come off the base to get their kit on. They can be replaced by any player not on base and not one of the next four batters.
Sb.7.	Players may substitute without limit except that they must always (UNLESS running for the replaced catcher) bat or run in the same position in the batting order.
Sb.8.	Positional changes on the field may be made at any time.
Sb.9.	The Designated Batter rule is not used in EISM matches.
Sb.10.	Infield fly rule is played in the boy's competition. No infield fly rule in girls' matches.
Sb.11.	A 'safety base' will be used at first base. The white part sits on the fair/foul line and inside the diamond, the coloured section sits in foul territory. The fielder is to only use the white base when the throw is coming from fair territory and the runners to use the coloured part to run through on a one base hit.
Sb.12.	The Pitching Distance in finals will be 40 feet (12.19m) for Year 8 boys, Seniors and Year 9 girls and 35 feet (10.67m) for Year 8 girls and Year 7. During weekly competition, distances for Years. 7, 8 and 9 can be negotiated by coaches and umpires.
Sb.13.	Pitching zone is between armpits and knees, over home plate when batter is in a natural batting stance.
Sb.14.	For all years and genders the base distance is 60 feet (18.29 metres).
Sb.15.	The pitch should be fully marked, including batter's box for both left and right handers. A dead ball line needs to be marked if you are not on an official diamond.
Sb.16.	Coaches are not to direct their pitchers to walk a batter to first base.
Sb.17.	The fielding team coach should remain behind the dead ball line. The batting team may have a coach in both coaches' boxes positioned in foul territory. Coaches under 18 must wear a helmet whilst in a coaching box.

EISM MATCH REGULATIONS – TABLE TENNIS

TECHNICAL REQUIREMENTS

Team Size	On Court	Minimum - Minimum number must be met to constitute a scored match		
	6 players	Schools unable to field all players shall forfeit those sets that are not played. If 50% or more of the matches are forfeited, the entire fixture will be considered a forfeit.		
Ball	White or orange in colour, preferably of competition standard by a reputable brand.			
Match Officials	Self-Umpired			
Uniform Requirements	All Players	Compulsory School Issued Uniform:		
		<ul style="list-style-type: none"> - Short or Long-Sleeved Playing Top or Polo - Shorts or Pants 		
Expected Match Duration	Singles	Best of 5 games up to 11	Doubles	Best of 5 games up to 11
Minimum Match Duration	Singles	Best of 3 games up to 11	Doubles	Best of 3 games up to 11
	Minimum 50 minutes of match play			
Mercy Rule	There is no specific Mercy Rule in this sport. If you are winning comfortably, encourage students to keep rallies going and not to hit big winners.			
Incomplete Matches (emergencies & adverse weather)	50% of the match must be completed before a result can be given.			
Tied Grand Final	In the case of a Grand Final being tied in sets, games, and points, the premier will be the team that won the '1 & 2' doubles match.			

MATCH RULES

Tt.1.	All games to be played in accordance with the current rules of the ITTF, unless contra indicated below.		
Tt.2.	Six matches of singles	Three matches of doubles (<i>six if time permits</i>)	
	1 v 1	1,2 v 1,2	
	2 v 2	3,4 v 3,4	
	3 v 3	5,6 v 5,6	
	4 v 4	1,4 v 1,4	
	5 v 5	2,5 v 2,5	
	6 v 6	3,6 v 3,6	
Tt.3.	Doubles matches in italics are optional, and can be played if time permits. In the event that time is called prior to all optional matches being completed, no optional matches are to count to the final score.		
Tt.4.	Players should be seeded according to ability with the best players playing as '1'.		
Tt.5.	Players can interchange between singles and doubles. Students playing their second match cannot play at a lower level than what they played in their first match.		
Tt.6.	Best of five games played to 11, with an advantage of two, e.g 13 - 11. If a team reaches 3 games to nil, the match is considered complete with the 3-0 score recorded.		
Tt.7.	After 2 serves, service is rotated.		
Tt.8.	Visiting team calls toss with winner choosing end or service.		
Tt.9.	When serving, the ball must be thrown upward from an open palm before making contact with the bat.		
Tt.10.	When serving, the ball must be hit at a point behind the table (not over the table).		
Tt.11.	Change ends with each game and mid-way through final match, i.e. first to 6.		
Tt.12.	The winner shall be the team who has won the most sets. If sets are drawn, the winner shall be the team who has won the most games. If games are drawn, the winner shall be the team who has won the most points.		

EISM MATCH REGULATIONS – TENNIS

TECHNICAL REQUIREMENTS

Team Size	On Court		Minimum - Minimum number must be met to constitute a scored match
	Central	4 players	Schools unable to field all players shall forfeit those sets that are not played. If 50% or more of the matches are forfeited, the entire fixture will be considered a forfeit.
	Eastern	6 players	
Ball	Tennis balls must be new and of competition standard, supplied by the home team		
Match Officials	Self-Umpired		
Uniform Requirements	All Players	Compulsory School Issued Uniform: <ul style="list-style-type: none"> - Short-Sleeved Playing Top or Polo - Shorts or Skirt 	
Expected Match Duration	5 game tie break sets		
Minimum Match Duration	4 game tie break sets		
	Minimum 50 minutes of match play		
Mercy Rule	There is no specific Mercy Rule in this sport. If you are winning comfortably, encourage students to keep rallies going and not to hit big winners.		
Incomplete Matches (emergencies & adverse weather)	50% of the match must be completed before a result can be given.		
Tied Grand Final	In the case of a Grand Final being tied in sets, games, and points, the premier will be the team that won the '1 & 2' doubles match.		

MATCH RULES

Te.1.	All games to be played in accordance with the current rules of the ITF, unless contra indicated below.			
Te.2.	CENTRAL		EASTERN	
	SINGLES 4 matches	DOUBLES 2 matches (<i>4 if time permits</i>)	SINGLES 6 matches	DOUBLES 3 matches (<i>6 if time permits</i>)
	1 v 1 2 v 2 3 v 3 4 v 4	1,2 v 1,2 3,4 v 3,4 <i>1,4 v 1,4</i> 2,3 v 2,3	1 v 1 2 v 2 3 v 3 4 v 4 5 v 5	1,2 v 1,2 3,4 v 3,4 5,6 v 5,6 <i>1,4 v 1,4</i> 2,5 v 2,5 3,6 v 3,6
Te.3.	Doubles matches in italics are optional, and can be played if time permits. In the event that time is called prior to all optional matches being completed, no optional matches are to count to the final score.			
Te.4.	Players should be seeded according to ability with the best players playing as '1'.			
Te.5.	Players can interchange between singles and doubles. Students playing their second match cannot play at a lower level than what they played in their first match.			
Te.6.	'Time' must be decided before the match starts, ensuring minimum match durations are met.			
Te.7.	In recording results please record sets won and games won. The total number of sets won will determine the results for each team at the end of 'time'. In the event of a tie on sets, the number of games won will determine the winning team.			
Te.8.	When 'time' is called, a set will be awarded if they are two games clear and at least five games have been played in the set. Games played in any unfinished sets count towards the final result.			
Te.9.	The winner is the team who has won the most sets. If sets are drawn, the winner is the team who has won the most games. If games are drawn, the winner is the team who has won the most points.			
Te.10.	Each match is of one 5 game tie-break set. If games reach 5 games all, a tie break to be played to determine the winner of the set.			
Te.11.	The tie-break is first to 7 points. If the score reaches 6 all, the game continues until there is a margin of two points. First service occurs from the right court. Thereafter, each player serves in rotation for two points, beginning from the left court. Change ends every 6 points.			
Te.12.	Sudden Death Deuce. Only one point is needed to win the game when deuce is reached. The receiver or receiving team choose the side that the server serves from.			

EISM MATCH REGULATIONS – TOUCH FOOTBALL

TECHNICAL REQUIREMENTS

Team Size	On Court	Minimum - Minimum number must be met to constitute a scored match	
	6 players	4 players	
Equipment	Classic Touch Senior Match Ball		
Match Officials	1 Referee		
Uniform Requirements	All Players	Compulsory School Issued Uniform: <ul style="list-style-type: none"> - Numbered Short-Sleeved Playing Top or Polo Top or Polo - Shorts 	
Expected Match Duration	2 x 20-minute halves	2-minute breaks *can be longer if time permits	
Minimum Match Duration	2 x 15-minute halves	2-minute breaks	
Mercy Rule	The 'drop off' rule is to apply when a team gets to 5 tries in front. When a team gets to 8 tries up, a second player is 'dropped off'. If the losing team were to score a try and get back within the 5 or 8 tries buffer, the player who had been 'dropped off' can return to the field of play.		
Incomplete Matches (emergencies & adverse weather)	If 75% or more of match time has been played, the winner shall be the team who is winning when time is stopped. If 75% of the match has not been played, it is a draw.		
Tied Grand Final	Extra time is played. The 'Drop-Off' rule is to apply, so every 2 minutes a player from both teams is taken from the field and not replaced until a 'golden-try' is scored. If after 8 minutes a try has not been scored, it will be deemed a shared premiership.		

MATCH RULES

To.1.	All games to be played in accordance with the current rules of Touch Football Australia unless contra indicated below.
To.2.	Interchange can occur at any time.
To.3.	The dimensions of the field are to be the same as a half size soccer pitch (approximately 70x50m) with appropriate Touch Football markings.
To.4.	If the dummy half scores or is caught with the ball, a turnover of possession occurs. Score does not count.
To.5.	The ball cannot touch the ground when in play. Turnover of possession occurs if the ball does make contact with the ground.
To.6.	The ball is not to be kicked during the game.
To.7.	At 'play the ball', the ball needs to be stationary between the legs without touching the foot.
To.8.	At 'play the ball', all the defensive team players must be 5 metres from the 'play the ball' (in a straight line).
To.9.	The ball must be passed in a backward direction.

EISM MATCH REGULATIONS – Twenty/20 Cricket

TECHNICAL REQUIREMENTS

Team Size	On Field	Minimum - Minimum number must be met to constitute a scored match
	11 players	7 players
Ball	Traditional 156g cricket ball (red, white or pink). One new ball per innings.	
Match Officials	1 Umpire or Coach per School	
Uniform Requirements	All Players	Compulsory School Issued Uniform: <ul style="list-style-type: none"> - Short or Long-Sleeved Playing Top or Polo - Jumper or pullover (optional) - Shorts or Pants - OR full whites (all players must be in identical colours)
	Batters	Compulsory Protective Equipment <ul style="list-style-type: none"> - Batting Helmet with Faceguard - Pads, Batting Gloves & Box
	Catcher	Compulsory Protective Equipment <ul style="list-style-type: none"> - Helmet with Faceguard (if standing up to stumps) - Pads, Keeping Gloves & Box
Expected Match Duration	20 overs per team	
Minimum Match Duration	5 overs per team – 50 minutes	
Mercy Rule	There is no specific Mercy Rule in this sport. If you are winning comfortably, give fringe players a turn.	
Incomplete Matches (emergencies & adverse weather)	Any incomplete match is deemed a draw. A minimum of 5 overs per side is required to constitute a match (agreed prior to match commencing).	
Tied Grand Final	A 'Super Over' will be bowled by each team. If scores are still level after the 'Super Over', a shared premiership is awarded.	

MATCH RULES

CrT.1.	All games to be played in accordance with the current rules of the ICC, unless contra indicated below.
CrT.2.	A match consists of one innings per side. Once the target score has been passed the game concludes.
CrT.3.	If the team batting first is dismissed in less than 20 overs, the team batting second shall be entitled to bat for 20 overs. Strict adherence to over rates must be observed.
CrT.4.	Intervals between innings shall be minimal. No drinks break during the innings.
CrT.5.	No fielders permitted within 10 metres of the batsmen in front of the batting crease.
CrT.6.	If a coach umpires, they can assist the captain with the team's organisation pre-game, and between wickets, otherwise team tactics and instructions are coordinated by the captain.
CrT.7.	All teams to have their own approved scorebook. In the event of schools being tied on points for a final, a net run rate from relevant games determined by runs divided by balls bowled will be used.
CrT.8.	A batsman is to retire at the end of the over when his score reaches 50.
CrT.9.	Retired batters can recommence their innings when all other batters are out, and less than 10 wickets have fallen. Compulsorily retired players do not resume their innings until all voluntarily retired players have completed their innings. Voluntary retirement can only occur at the end of an over.
CrT.10.	If a school chooses to retire a batsman before the compulsory retirement, all 13 players can bat. The fall of the 10 th wicket will always constitute the end of an innings.
CrT.11.	A maximum of 10 bowlers may bowl per innings. The maximum number of overs per bowler is 4.
CrT.12.	Each over will consist of a maximum of '8' balls, therefore a maximum of 2 extra balls. This is except for the final over which is to be 'bowled out'.
CrT.13.	Overs are to be bowled in 5-over blocks alternating between ends. At the end of each over, only the two batters change ends.
	For the first 5 overs of each innings, only two fielders are permitted to be outside the field restriction circle. For overs 6-10 – only 3 fielders are permitted outside the circle. For overs 11-15 – only 4 fielders. For overs 16-20 – only 5 fielders.
CrT.14.	The fielding restriction circle is recommended as 27.5m radius from the middle stump.
CrT.15.	The delivery following a no ball shall be a free hit for whichever batter is facing it.

EISM MATCH REGULATIONS – ULTIMATE FRISBEE

TECHNICAL REQUIREMENTS

Team Size	On Court	Minimum - Minimum number must be met to constitute a scored match
	7 players	5 players
Equipment	175g Disc	
Match Officials	Self-Umpired	
Uniform Requirements	All Players	Compulsory School Issued Uniform: – Short-Sleeved Playing Top or Polo – Shorts
Expected Match Duration	4 x 12-minute quarters	2-minute breaks *can be longer if time permits
Minimum Match Duration	4 x 10-minute quarters	2-minute breaks
Mercy Rule	The team who is behind in score takes possession after each goal from the halfway line when down by ten.	
Incomplete Matches (emergencies & adverse weather)	If 75% or more of match time has been played, the winner shall be the team who is winning when time is stopped. If 75% of the match has not been played, it is a draw.	
Tied Grand Final	An extra five minutes is played each way. If the score is still tied at the end of this time, a shared premiership is awarded.	

MATCH RULES

Uf.1.	All games to be played in accordance with the current rules of The Ultimate Players Association unless contra indicated below.
Uf.2.	The Field is 110m long (consisting of two 23m End Zones and a 64m Playing Field) and 37m wide. The games can be played on modified size pitches with the range of dimensions to be between: Length: 100 – 110m & Width: 35 – 40m
Uf.3.	There is no provision for a Team Time-Out. Injury Time-Outs and Technical Time-Outs can be called.
Uf.4.	Substitutions can occur at any time so long as the player coming off has left the field of play before the other player enters the field of play.
Uf.5.	Each point begins with the team to defend throwing from their end zone (pull) to the other team. The receiving team can start from between their end zone to the halfway line. Both teams are to signal they are ready for the throw. If the receiving team touches the pull and it hits the ground, it is considered a dropped disc and results in a turnover.
Uf.6.	Play commences from where the Frisbee hits the ground rather than where it rolls to.
Uf.7.	To score a point, a player must catch a legal pass in the defense's end zone.
Uf.8.	A "Callaghan Goal" (own goal) is not permitted. Only attacking players can score.
Uf.9.	After a goal, the team that was defending takes 'the walk' back to the halfway line.
Uf.10.	The disc can be thrown in any direction. Players receiving a pass need to stop as quickly as possible and then establish a pivot foot. Players are allowed to regain their feet if they fall over in the act of catching the disc and then establish a pivot foot.
Uf.11.	The person with the disc has 5 seconds to throw it. The defender guarding the thrower initiates a stall count by saying 'stalling'. Calls such as 'one Mississippi' are encouraged to avoid a 'fast count'.
Uf.12.	Only one player is allowed to defend the Thrower at any one time no closer than 1m.
Uf.13.	When a pass is not completed (i.e. out of bounds, drop, block or interception), the defence immediately take possession of the disc and becomes the offence. A defender deflecting the disc does not impact upon the changeover of possession if the pass is not completed.
Uf.14.	The disc must be in the thrower's hand before possession is gained by another teammate.
Uf.15.	No physical contact is allowed between players, unless it is accidental while both players are vying for the disc. Screens are not permitted. A foul occurs when deliberate contact or screening occurs.
Uf.16.	When a foul disrupts possession, play resumes as if the possession was retained.
Uf.17.	If any error by the defensive team occurs within their own goal area, then the offensive team must take the free pass from outside the scoring zone.
Uf.18.	The match is to be self-officiated by the students however, the home team is to supply a match supervisor who shall make a ruling over any disputed calls.
Uf.19.	If the teams cannot determine who is at fault in a foul or rule infraction, the disc goes back to the previous thrower to start play again.

EISM MATCH REGULATIONS – VOLLEYBALL

TECHNICAL REQUIREMENTS

Team Size	On Court	Minimum - Minimum number must be met to constitute a scored match
	6 players	4 players
Equipment	Mikasa MVA 200 (V200W) or MVA 300 (V300W)	
Match Officials	1 Referee or Coach	
Net Heights	Year 7 Girls – 2.05m Year 8 & 9 Girls – 2.10m Year 7 Boys & Year 10-12 Girls – 2.15m Year 8 & 9 Boys – 2.24m Year 10-12 Boys – 2.35m	
Uniform Requirements	All Players	Compulsory School Issued Uniform: – Short or Long-Sleeved Playing Top or Polo – Shorts
Expected Match Duration	Best of 5 sets	2-minute change of ends
Minimum Match Duration	Best of 3 sets – 50 minutes	2-minute change of ends
Mercy Rule	There is no specific Mercy Rule in this sport. If you are winning comfortably, encourage students to keep rallies going and not to hit big winners.	
Incomplete Matches (emergencies & adverse weather)	For a winner to be awarded, 50% of the match must be completed before a result can be given (e.g. 3 out of 5 sets or 2 out of 3 sets)	
Tied Grand Final	Where possible, a deciding set should be played to determine the winner. Where there are time constraints and sets are equal, points will determine the winner.	

MATCH RULES

Vb.1.	All games to be played in accordance with the current rules of Volleyball Australia unless contra indicated below.
Vb.2.	Schools must agree on 'time' prior to the match commencing.
Vb.3.	Sets are first to 18 points. Teams do not need to be 2 points clear to win a set.
Vb.4.	The 5 th set is to be to 18 points, however, can be reduced prior to the 5 th set starting, by agreement.
Vb.5.	If sets are tied at the end of 'time', points are used to determine the winner. Points from unfinished sets are included in the final points.
Vb.6.	A 30 second (non-injury) timeout is permitted during each set, from each team.
Vb.7.	Coaches need to confer prior to the game to establish the method of rotation. This method is not to be changed during the game, but can be different for each school. The default rotation method is to have a player entering as server, and rotating through each position. If a school wishes to use substitutions, they must wear playing numbers and nominate substitutions in advance.
Vb.8.	The server must be behind the end line. They may freely move or jump as long as they do not touch the end line at the moment they hit the ball. Once they have hit the ball, the server may land within the court or the free zone.
Vb.9.	The server must hit the ball within 5 secs after the first referee whistles for service.
Vb.10.	Services made before the referee's whistle, are cancelled and must be repeated.
Vb.11.	When serving, the ball shall be clearly hit with one hand or with any part of the arm after being thrown or released and before it touches the playing surface.
Vb.12.	The ball may be contacted with any part of the body.
Vb.13.	The ball may contact various parts of the body provided the contacts are done simultaneously, the hit is correct and the bounce is clear.
Vb.14.	The ball must be clearly hit and not come to rest (lifted, pushed, carried or thrown).
Vb.15.	When judging contact with the ball, don't take into consideration the movements of the players either prior or subsequent to the contact, nor the sound produced by the contact.
Vb.16.	Before the game the six players will line up on their respective base lines until called on the court by the referee. At the end of each game the team retires to the base line and then moves in a clockwise direction around the court to again line up on the base line of the opposite court.
Vb.17.	The use of libero is permitted at all year levels.

CONDUCT OF EVENTS

THE EXECUTIVE OFFICER

The duties of the Executive Officer include:

1. Overseeing the whole program
2. Define key areas of accountability and responsibility
3. Paying officials, first aid, security and charges levied by venue controllers.
4. Engaging officials who are competent and who will be in attendance for the entire duration of the event(s) to run specific components of that event. The officials to be engaged and paid, if from outside the association.
5. Inviting Principals, whose attendance is anticipated by the Association, to all events
6. Keeping copies of the procedures involved in organising each of the Events. The organising schools may obtain copies of these from the Executive Officer.

PRINCIPALS

1. Will authorise release of enough staff to control events and to supervise their teams as defined in Victorian Education Department Policies.
2. Will ensure that athletes are correctly attired in the official sports uniform of their school

HEADS OF SPORT

1. Details of the rules will be forwarded to schools by the Executive Officer prior to the event.
2. A sub-committee of Sports Teachers will be responsible for assisting with the running of specific components of the events.
3. Students and staff of schools are required to remain at the Swimming, Athletics and Cross Country Events until the conclusion of the Presentation Ceremony.
4. A promotion/relegation system is in effect. Top school replaces bottom school
5. Entries for the EISM Swimming and Athletics will only be accepted via Hytek Team Manager 'entries' file. Entries for the EISM Cross Country are via a proforma Microsoft Excel Spread sheet.
6. Event Entry Form to accompany Entries advising the EISM Office of Staff acting as Officials and attending Photographers.
7. There must be no coaching inside the competitions area during events (includes pool deck, athletics track). In cross country there is to be no 'pacing' of competitors during the race.
8. The Division in which each EISM Member School will be competing in for relevant event is in Appendix VII.
9. Refer to the Handbook, *EISM Program-General Information-Disputes, Protests & Appeals* for correct procedure to lodge protests.

COMPETITORS

1. Competitors are restricted to one age group, unless there is no provision for a specific event within that age group. In that case a competitor may enter the next older age group.
2. A student may choose to compete in an older age group. If they do, the student must compete in this older age group for the duration of the event.
3. All students competing in EISM carnivals MUST be secondary students.
4. Age groups to be determined by age as of midnight 31st December 2025. If 12 on 1st January 2026, then that student competes as an under 13.

For the calendar Year **2026** if you are born in the following years, you compete in:

2007-2009	Open
2010	Under 16
2011	Under 15
2012	Under 14
2014-2013	Under 13

EVENT REGULATIONS - ATHLETICS

GENERAL

The rules of the competition will be as directed by Athletics Victoria unless contra indicated below. Any infringement of the rules may result in the disqualification of the competitor.

Member School Staffing Requirements:

- Divisional: Three staff to be provided to assist EISM (two smallest schools in Division 2 and 3 to provide two staff).
- Student Assistants to be supplied as required (approx. three per school).

MARSHALLING

Track Events:

- In track events, marshalling occurs up to 10mins before the event. Track events are marshalled near the start line of each event. There is no central marshalling for relays, competitors are to go directly to their change-over point.
- When competing in both Track and Field Events, marshal at both events, in person or by proxy, and complete as much of the Field event as possible before returning to the Track. Inform the Field Event official that you have a clash of events.

Field Events:

- Competitors can marshal (in person or by proxy) any time before the event commences.
- Where a competitor fails to marshal prior to the commencement of any field event, they will not be disqualified from that event, but will forfeit any jumps or throws missed and will not be permitted to have any practice throws or jumps.
- When a competitor has marshalled prior to an event but is unable to be at the commencement of the event because of a clash, they will be permitted to have one practice throw/jump and then have a full quota of jumps/throws. These throws/jumps must commence prior to the start of the next field event.
- If a competitor has a clash of field and track events, they will be permitted to take their three attempts before departing to the track event.
- In the High Jump, if the athlete is not present when called to jump, they will be considered to have 'passed' at that height. The bar is never to be made lower during an event.

MISCELLANEOUS

- All competitors required to wear the 'School approved' Athletics Uniform or be disqualified.
- The Shot Put, Discus and Warm Up Track is supervised by security from 9.00am-2.00pm only. Students using the Shot Put, Discus and Warm Up Track are expected to be supervised by a staff member from their school. Security are in place to prevent external intruders, not to manage student behaviour.
- Head of Sport from each school to assist with relay changeover.
- Competitors may compete in a maximum of five events plus one relay.
- The cooperation of coaches/managers is required at the athletics venue to ensure that the program runs smoothly by:
 - providing student assistance to move hurdles between events (athletics)
 - directing students (especially Year 7) to events as required
 - not using the track for relay warm-up when other track events are in progress
 - keeping students in school areas whenever possible
 - checking students' uniform prior to events
 - treating minor injuries in school areas
 - ensuring no footballs or other sporting equipment is brought to the venue

EVENT REGULATIONS - ATHLETICS cont'd

ATHLETICS PROGRAM

Following is a list of events offered to Girls and Boys in the Athletics program for the various divisions:

High Jump	U13 to Open	Div 1, 2 & 3
Long Jump	U13 to Open	Div 1, 2 & 3
Triple Jump	U13 to Open	Div 1, 2 & 3
Shot Put	U13 to Open	Div 1, 2 & 3
Discus	U13 to Open	Div 1, 2 & 3
100m A, B C	U13 to Open	Div 1, 2 & 3
200m A & B	U13 to Open	Div 1, 2 & 3
400m	U13 to Open	Div 1, 2 & 3
800m (2 runners)	U13 to Open	Div 1, 2 & 3
1500m (2 runners)	U13, U15 & Open	Div 1, 2 & 3
Relay	U13 to Open	Div 1, 2 & 3
Hurdles	U15 & Open	Div 1 & 2
Multi-Class 100m	As required	Schools to request Entry Form

Points

Division 'A'	30, 27, 25, 24, 23, 22, 21, 20, 19, 18, 17, 16, 15, 14.
Division 'B'	20, 18, 16, 15, 14, 13, 12.
Division 'C'	10, 8, 7, 6, 5, 4, 3.
Relays:	45, 41, 38, 36, 34, 32, 30.

FIELD EVENTS

In the event of a tied event determined by distance – Shot Put, Discus, Long Jump & Triple Jump, the second best performance of the competitors tying shall decide the tie. If a tie remains, the third best distance and so on.

In High Jump, the competitor with the lowest number of jumps at which the tie occurs shall be awarded the higher place. If the tie remains, the competitor with the lowest number of failures shall be awarded the place.

Long Jump

1. If a competitor touches the ground beyond the take-off board whether running up without jumping or in the act of jumping, it shall be a NO JUMP.
2. All jumps shall be measured from the nearest break in the landing area made by any part of the body to the take-off line, and at right angles to such line. Sand should be raked evenly between the jumps.
3. No part of trailing leg of jumper strikes the ground before entry into pit (no jump).

Triple Jump

1. In Triple Jump trailing leg CAN hit the ground provided it gives no assistance.

High Jump

1. Competitor must take off from one foot. Knocking the bar off the supports or touching the ground behind the uprights before taking off shall count as a NO JUMP.
2. The commencement height and the different heights by which the bar will be raised shall be announced before starting (initially 5cm later, 3cm, 2 cm and finally 1 cm).
3. A competitor may start jumping at any height above the minimum height. Three consecutive failures at a given height disqualify the competitor.

Starting Heights:	Age	Girls	Boys
	U13	1.05m	1.10m
	U14	1.10m	1.15m
	U15	1.15m	1.20m
	U16	1.20m	1.30m
	Open	1.20m	1.35m

EVENT REGULATIONS - ATHLETICS cont'd

Shot Put

1. The order of competitors is as per the program. Three attempts are allowed for each competitor.
2. The competitor must commence the throw from a stationary position.
3. The competitor is allowed to touch the inside of the iron band or stop board. It shall be a foul throw if, after commencing the throw, they touch the top of the stop board or circle or ground outside the circle or improperly releases the shot in making the attempt. A competitor may stop 'mid throw', lay the implement down and return to a stationary position, provided they only restart once during each trial.
4. A competitor may not leave the circle until the implement has touched the ground and then must leave by the rear half of the circle.
5. All throws must land within the inner edges of the lines marking the throwing sectors.
6. The measurement of each throw shall be made from the nearest mark made by the fall of the Shot to the inside of the circumference of the circle, along a line from the mark made by the implement to the centre of the circle or the centre of the radius of the arc.
7. The Shot must be carried back to the starting line or circle.
8. The Shot shall be put from the shoulder with one hand only. The Shot should be close to the chin and the hand must not be dropped from this position during the action of putting. The Shot must not be brought behind the line of the shoulder.
9. Shot Put competitors need to move directly from the Stadium to their event which is being conducted outside of the main event area behind the back stands. Spectators who wish to watch can do so only from the designated viewing area.

Shot Put Weights for EISM:

Age	Girls	Boys
U/13	3 kg	3 kg
U/14	3 kg	3 kg
U/15	3 kg	4 kg
U/16	3 kg	4 kg
OPEN	3 kg	5 kg

Discus

1. The order of competitors is as per the program. Three attempts are allowed for each competitor.
2. The competitor must commence the throw from a stationary position.
3. The competitor is allowed to touch the inside of the iron band or stop board. It shall be a foul throw if, after commencing the throw, they touch the top of the stop board or circle or ground outside the circle.
4. A competitor may not leave the circle until the discus has landed and then must leave by the rear half of the circle.
5. All throws must land within the inner edges of the lines marking the throwing sectors.
6. The measurement of each throw shall be made from the nearest mark made by the fall of the Discus to the inside of the circumference of the circle, along a line from the mark made by the implement to the centre of the circle or the centre of the radius of the arc.
7. The Discus must be carried back to the starting line or circle.
8. Discus competitors need to move directly from the Stadium to their event which is being conducted outside of the main event area behind the back stands. Spectators who wish to watch can do so only from the designated viewing area.

Discus Weights for EISM:

Age	Girls	Boys
U/13	750g	750g
U/14	1 kg	1 kg
U/15	1 kg	1 kg
U/16	1 kg	1 kg
OPEN	1 kg	1.5 kg

EVENT REGULATIONS - ATHLETICS cont'd

TRACK EVENTS

Start

"On your marks", "Set" - gun. If a competitor leaves the "Set" position before the gun, it is a false start. The competitor making the false start must be warned. If they are responsible for two (2) false starts they will be disqualified. Crouch starts are compulsory for sprint starts (ie. 100m – 400m). The use of starting blocks is optional.

Finish

The competitors shall be placed in the order in which any part of their "torso" (not head, arms, legs, hands or feet) reach the nearer edge of the finish line. Any competitor leaving their lane and cutting across another competitor shall be disqualified. This does not apply to the 800 and 1500 metres where lanes are not designated.

Number of Entrants for each Event

There is one student to represent each school for all events except the 800m and 1500m. Two students to compete in each of these events.

Relays

1. Members of the team other than the first runner may commence running not more than 10m outside the takeover zone. In all relays, the baton must be passed within the takeover zone.
2. If the baton is dropped, it must be recovered by the athlete who dropped it.
3. Competitors after handing the baton over, remain in their lane, until the course is clear.
4. The final runner only of the first three placegetters will collect ribbons for their teams.
5. If a runner throws a baton at the conclusion of the event, the offender risks disqualification.

Hurdles

If the track is rain affected, competitors are required to wear spikes.

Girls' EISM Hurdle Specifications

Age	Race Distance	No. of Hurdles	Hurdle Height	Distance To First	Distance Between	Distance To Finish
U/15	90m	9	76cm	13m	8m	13m
OPEN	100m	10	76cm	13m	8.5m	10.5m

Boys' EISM Hurdle Specifications

Age	Race Distance	No. of Hurdles	Hurdle Height	Distance To First	Distance Between	Distance To Finish
U/15	100m	10	84cm	13m	8.5m	10.5m
OPEN	110m	10	91.5cm	13.72m	9.14m	14.02m

EVENT REGULATIONS – CROSS COUNTRY

Member School Staffing Requirements:

- Carnival Committee Schools to supply three Staff, all other Schools to supply one Staff.

Starting Procedure:

- All competitors must marshal 5-10 minutes before the scheduled event start. If a competitor marshals late they are to start from the 2nd start line. Staff are allowed in the marshalling area to talk with students.
- Failure to marshal will lead to disqualification
- Competitors without an official bib will not be allowed to compete.
- The starter will call the competitors forward with the call 'On your marks!' The race will then be started on the sound of a starting pistol.

Finish & Scoring Procedure:

- Schools can field up to ten competitors per event.
- Bibs must be assigned a name prior to the race to be counted.
- Team Managers are responsible for the pickup and distribution of bibs.
- All age groups and genders are to run 3000 metres.
- Points awarded:
 - 1st competitor to finish gains 1 point
 - 15th competitor to finish gains 15 points
 - 63rd competitor to finish gains 63 points
 - The default score of 100 points per person will apply to schools that don't have sufficient runners completing the course.
- At the conclusion of the Event, in each Division the school with the lowest total points over all age divisions is the Champion Cross Country School.
- The first three placegetters in each event to receive medallions.
- **Division 1:** The first five competitors from each school in each event will constitute their scoring team.
- **Division 2:** The first four competitors from each school in each event will constitute their scoring team.
- **Division 3:** The first three competitors from each school in each event will constitute their scoring team.

Miscellaneous

- If required, students should take their EpiPen with them when they run the course. Schools have the option of trailing the last runner in the event on a bike with the appropriate EpiPen for their student.
- There are 21 marshals around the course. Schools are requested to have a generic EpiPen with each marshal. Instruct students to seek assistance from a marshals if they are in difficulty
- Each competitor must be dressed in full school colours and wear an official Competitors Bib
- Each competitor must adhere strictly to the course as stated and displayed
- No-one, not involved in the race, can run with or physically support a runner during an event
- No competitor may run with any music devices or sporting equipment
- Schools are to advise the EISM Office in writing if a competitor is out of their age group
- A Pennant to be awarded to the lowest combined score of boys and girls for each age group
- It is the responsibility of each school to ensure that their own competitors know the course
- The set course is not to be used for warm-ups, all warm-ups need to be conducted off-course
- Students are not to play ball games in the immediate vicinity of the course or tents
- Students are not to play on the pre-school play equipment located at the venue

EVENT REGULATIONS – SWIMMING

GENERAL

The rules of the competition will be as directed by the Swimming Victoria Inc. unless contra indicated below. Any infringement of the rules may result in the disqualification of the swimmer concerned.

Member School Staffing Requirements:

- Division 1 Schools to supply two/three staff, Division 2 & 3 Schools to supply one/two staff.
- Student Assistants to be supplied as required.
- All Schools to supply Timekeepers. This role may be undertaken by staff or students.

Disqualifications:

- *Starts:*
 - Diving in before the starter's signal (or equivalent for Backstroke)
 - In Breaststroke, taking more than 1 ½ strokes whilst under water
 - In all strokes, travelling more than 15m underwater
- *During events:*
 - Incorrect stroking, which goes beyond reasonable tolerance as described in the Events Section
 - Incorrect changeovers in Relays
 - Walking on the floor of the pool
 - In Breaststroke, using a flutter or butterfly kick. The legs *should* mirror the same pattern (no uneven kick)
 - In Butterfly, using the flutter or breaststroke kick. Butterfly arms *should* be brought forward over the surface of the water *near* simultaneously
 - In Butterfly and Breaststroke, performing a stroke that does not approximate the intended stroke
- *Finish:*
 - In Breaststroke and Butterfly, touching with one hand
 - In Backstroke, the swimmer must touch the wall while on the back. The swimmer must not be totally submerged
- *Swimwear Infractions;*
 - Swimmers must wear 'School approved' swimwear (no bikinis, football shorts or board shorts allowed). All swimmers must wear a school swim cap. Competitors must abide by Swimming Victoria Regulations of one garment only.

Marshalling:

- Schools have been supplied with a map of the venue and it is vital that all competitors report to the marshalling area promptly once their event has been called. Competitors will exit this room and go directly to the pool deck and therefore must have everything they require at this stage. Upon entering the pool deck all competitors must keep well back from the pool edge until requested to take their blocks.
- Competitors who do not marshal will not be credited points for the event. They will be deemed to have not swum.
- Swimmers may also check in for all of their events the first time they marshal.

EVENT REGULATIONS - SWIMMING cont'd

Warm Ups:

- Competitors will only be permitted to use the 50m Competition Pool for swimming warm ups during the allocated times. Lane allocations will be noted in the Program.
- Feet first entry only into the water for warmups. This is a safety issue, due to the number of swimmers in the pool at one time. Swimmers to swim in a clockwise direction in their lane and there is to be no stopping at the end of the lane.
- Diving is only to occur during the specified time, in the specified lanes.
- Swimmers are NOT to sit on the lane ropes. Swimmers must NOT exit the pool by climbing over the timing pads.
- At the completion of the 15 min warm-up period, all swimmers are to return to the stands or go directly to the marshalling room.
- Each school must supply sufficient adults to supervise the warmup and ensure that all swimmers are following the above rules.

Miscellaneous:

- Swimmers and spectators are requested to keep silent at the commencement of each race. i.e. from the Referees first long whistle until after the starting signal.
- It is the swimmer's responsibility to report punctually for their event.
- Competitors are allowed to compete in a maximum of 4 individual events and 3 relays.
- Competitor names are required by the EISM office one to two weeks before the event is held, as directed.

Start:

The start in Freestyle, Breaststroke, and Butterfly will normally be a dive. In certain circumstances, with permission from the Referee in Charge, a swimmer may start in the water and must touch the wall until the starting signal. The start for Backstroke is always in the water. Once swimmers are in the water, there will be a second long whistle to call swimmers to the starting position.

Swimmers are called to their blocks for the race by a long whistle. When the starter gives the command "Take your marks" swimmers will move to the front of the blocks and remain still until the starting signal. If a swimmer breaks before the Starters beep, the race will continue, and the breaking swimmer will be disqualified. If the Official Starter has made an error, a second start beep will be heard, and all Swimmers are then to return for a new start.

Swimming Program

Following is a list of events offered to both boys and girls in the Swimming program:

100m Freestyle	U15	Div 1
100m Freestyle	Open	Div 1, 2 & 3
50m Freestyle A	U13 to Open	Div 1, 2 & 3
50m Freestyle B	U13 to Open	Div 1
4x50m Medley Relays	U13 to Open	Div 1, 2 & 3
50m Breaststroke	U13 to Open	Div 1, 2 & 3
50m Butterfly	U14, U16 & Open	Div 1, 2 & 3
50m Backstroke	U13 to Open	Div 1, 2 & 3
4x50m Freestyle Relays	U13 to Open	Div 1, 2 & 3
5x50m Freestyle Relays	Open	Div 1, 2 & 3
Multi-Class 50m	As required	Schools to request Entry Form

Points

Individual A:	30, 27, 25, 24, 23, 22, 21, 20, 19, 18.
Individual B:	20, 18, 16, 15, 14, 13, 12, 11, 10, 9.
Relays:	45, 41, 38, 36, 34, 32, 30, 28, 26, 24.

EVENTS

Freestyle

If you stand up and walk on the bottom, fail to touch at the turn or finish, swim in another lane or interfere with another swimmer in any way you will be disqualified. A freestyle touch or finish may be with any part of the body.

Backstroke

Swimmers need to stay on their back until the head, arm or hand touch/hits the end. Don't stand up at the turns but push off the end and always be on your back. It is permissible for a swimmer to be completely submerged at the start or turn for not more than 15 metres.

Breaststroke

Keep your body on the breast with shoulders in line with the water level and make sure all leg and arm movements are synchronised and in the same horizontal plane. Feet must be turned outward in the backward movement of the legs. The head is permitted to be under the water but must break the surface at each stroke. At each turn and at the finish of the race the touch shall be made with both hands simultaneously at, above or below water level.

Butterfly

The body should be kept on the breast with the shoulders in line with the surface of the water. Both arms must be brought forward together over the water and brought backward simultaneously. All movements of the feet must be executed in a simultaneous manner. The legs and feet need not be at the same level, but no alternating movements are permitted. Failure to comply with these rules will result in disqualification.

Relays

In Relay events the feet of the outgoing swimmer must be touching the starting blocks, when the incoming swimmer touches the wall. Failure to comply with this constitutes a break for which the whole team will be disqualified.

In Medley Relay, the order of strokes is Backstroke, Breaststroke, Butterfly and Freestyle. If a swimmer does the 'wrong' stroke in any 'leg' the team will be disqualified. None of the three form strokes may be repeated in the Freestyle leg.

In the 5 x 50m Relay, each swimmer must be from a different age group. Schools may decide which order to swim their competitors.

GALA DAYS – CHESS

This is an Association one-day competition for all year levels run by 'Kids Unlimited'. It is an excellent opportunity for students to have another avenue to improve problem solving, concentration, memory, creativity and exercise for both sides of the brain; all in a safe and supportive environment.

The competition is available to all year levels, with school teams comprising of both girls and boys. The number of students who can attend is unlimited. They will compete in either the Junior or Senior section.

The top four student scores from your school will be counted towards your school's final score.

A staff member must accompany teams on the day of the competition.

Tournament Information Format

The tournament will be run according to the Swiss format to ensure that all students play against players of a similar standard; we expect both beginners and experts to enjoy a fun, learning and social experience.

1. All players play all games, regardless if they win or lose.
 - If a player wins a game, they score 1.0 point. In the subsequent game they play against a harder opponent.
 - If a player draws a game, they score 0.5 points. In the subsequent game they play against a similar level opponent.
 - If a player loses a game, they score 0.0 points. In the subsequent game they play against an easier opponent.
2. Computer pairing software Tornado.com will be used to match players. Where possible, the computer algorithm ensures students from the same team will not compete against each other.
3. The minimum team size for this competition is 4 players and maximum 14 players.
4. All players play 7 games of 12 min + 3 sec per player, regardless if they win or lose.

Rules

1. Once a game is complete and the board reset, the WINNER is responsible for reporting his / her score. If the game is a DRAW, then BOTH players must report their scores. A player losing a game is not required to report.
2. Results are scored as follows; 1 point for a win, ½ for a draw, and 0 for a loss.
3. After each round, players will be re-ranked and matched according to the number of games they have won. (e.g. a player with 3 wins will play someone else with 3 wins).
4. Players from the same team will not play against one another (an exception can be made at the arbiter's discretion for two players who have not yet scored a win).
5. Normal rules of chess apply.
6. Fair Play rules apply. Players may not receive any assistance during their games. This includes spectators, friends, family, books and computer engines. All games will undergo a Fair Play analysis and games which match too closely to computer engines will be forfeit.
7. If there is a dispute it is the responsibility of the player to notify the arbiter at the time of the dispute, NOT AFTER THE GAME.
8. The duration of each game is 12 minutes, plus 3 seconds per move, per player.
9. At the end of 7 rounds, final team placings will be determined by the SUM of the TOP 4 scores for each team.
10. The tournament will be run by Kids Unlimited and an arbiter will be provided.
11. For the complete Chess Tournament rules, please visit: <https://www.interschool.com.au/rules.html>

Member Schools will be invoiced per student after the competition.

GALA DAYS – GOLF

1. EISM Golf Gala Day Overview

This event is held in conjunction with EISM's Annual Tennis Open event, and is run at Glen Waverley Sports Hub. It includes the following competition categories for both male and female participants:

- **EISM Golf Individual Champion (Male & Female):** Awarded to both the male and female players with the lowest gross scores of the day.
- **EISM Golf Champion School (Open & Female):** Recognising the premier golf school in the association, determined by the lowest aggregate gross score from a team of three players.

2. Eligibility and Entries

Each school may enter the following:

- A team of the school's best three male golfers (can include female golfers for those schools that don't enter a female team)
- A team of the school's best three female golfers
- Any additional individual golfers entering the individual event only

Note: All golfers, whether entering individually or as part of a school team, will be eligible to win the EISM Golf Gala Day individual event.

3. EISM Golf Competition Information

.1 Competition Rules: The EISM Golf Gala will be conducted in accordance with *The Rules of Golf* as prescribed by the Royal and Ancient Golf Club of St. Andrews.

.2 Eligibility: Students entering this event must be bonafide students of the school of which they are representing. The event is an 'Open' event, meaning that students from Year 7 to 12 are eligible to enter.

.3 Event Officials: The event will be managed by the Golf Professional at Glen Waverley Sports Hub. They will be supported by appointed Tournament Referees.

.4 School Support: Competing students must be under the supervision of school staff for the duration of this event.

.5 Cost of Event: \$65 per player. This amount will be invoiced to the school on entry.

.6 Dress Code:

- Golfers are expected to adhere to a neat, casual dress code, including collared shirt/polo, tailored trousers, skirts, or shorts.
- Soft-spike golf shoes or flat-soled runners must be worn.
- Golfers must wear their school polo shirt and cap.

.7 Equipment Requirements: Players must supply their own well-maintained golf clubs, balls, tees, and ball markers. There will be limited pull buggies available on the day, at no additional charge.

.8 Spectator Guidelines: Parents/supporters/team members must remain at least 30 metres from players during competition play. In the first instance a warning will be given by the referee, and any subsequent breaches may result in disqualification.

.9 Trophies and Awards:

The following trophies will be awarded at the completion of play;

- EISM Individual Golf Champion - Male
- EISM Individual Golf Champion - Female
- EISM Golf Champion School - Open
- EISM Golf Champion School - Female

4. Overall Championship Rules and Guidelines

.1 General Regulations:

All matches will be played in accordance with the *Rules of Golf* established by the Royal and Ancient Golf Club of St. Andrews, supplemented by the following conditions of play.

.2 Handicap and Caddies:

- Players must have an official Australian handicap and a Golf Link number (or be in the process of obtaining one). It is recommended that handicaps of competing players are no higher than 20, to allow for a suitable speed of play across the duration of the event.
- Caddies/coaching are not permitted. The penalty for violation is disqualification.

.3 Scoring:

- The Tournament Manager will provide scorecards for golfers to manually fill out, and then swap with their playing partners.
- Following completion of the round, completed scorecards will be handed into the 'Results Desk' in the Pro Shop, where scoring will be completed.

.4 Adverse Playing Conditions:

The competition will proceed in all weather conditions except in the following cases:

- The host course declares the course unplayable.
- A suspension of play is declared by the appointed referee at Glen Waverley Sports Hub.

In such instances, EISM and the Tournament Manager will consider whether the conditions could become playable, and if not, will determine the most appropriate outcome for the event depending on various factors, including how many holes have been played etc.

5. COMPETITION REGULATIONS; Individual Event - 18-Hole Gross

.1 Format:

- Separate competitions will be conducted for Males and Females using gross scores.
- A seeded draw based on player handicaps will be prepared by Glen Waverley Sports Hub.

.2 Determining Winners:

- The winners will be the competitors with the lowest aggregate gross scores over 18 holes.
- In the event of a tie in either the Male or Female individual 18-hole stroke event, a sudden-death playoff will determine the winner.
- If a tie remains for minor placings, a countback will be used.

6. COMPETITION REGULATIONS; Teams Event – Stroke Play

.1 Format:

- Teams consist of three players.
- Separate competitions will be conducted for Open (mixed teams permitted) and Female categories using gross scores from the 18-hole stroke event.

.2 Determining Winners:

- The team with the lowest aggregate gross score over 18 holes will be declared the winner.
- In the case of a tie, results will be determined by:
 1. Aggregate stroke scores over the final 9 holes.
 2. If still tied, aggregate scores over the final 6 holes.
 3. If still tied, aggregate scores over the last 3 holes.
 4. If necessary, aggregate scores on the final hole.

GALA DAYS – TENNIS OPEN

This is an Association one-day Open Competition for the highest ranked players within a School, whether they be Senior or Junior. The event is held at Glen Waverley Sports Hub in Term 1.

Entries:

1. Each Main Draw for the Boys and Girls competitions will feature up to 20 players.
2. Schools are guaranteed a position for one boy and one girl.
3. The remaining places will be offered to schools' second preference competitors, in order of highest Universal Tennis Rating (UTR).
4. Third and fourth places will be offered to schools in order of UTR, if spaces remain.

General:

1. All players to have a responsible adult in attendance (eg. Parent/staff) who is willing to score.
2. Round Robin format – all players to play a minimum of 3 matches in the play-offs, with Finalists to play additional matches.
3. 6 game sets; 5 all tie breaks; sudden death deuce.
4. Finals will be a knock-out format.
5. Tournament Planner software to be used by the Tournament Director.
6. Fixtures and Game time will be determined when the players involved is confirmed.
7. All matches will count towards competitors' UTRs.

Member Schools will be invoiced per student after the competition.

GALA DAYS – 5 A SIDE SOCCER

This is an Association one-day Competition for Seniors and Juniors held at Knox Regional Football Centre in Term 3. Schools may enter both a Boys Team and a Girls Team in each division. Additional teams will be accepted if the fixture permits. Fixtures and game time will be determined when the number of schools involved is confirmed.

General:

1. Schools to bring Size 5 match balls.
2. All Team Members to have matching, individual numbered playing tops. No exchanging tops once the Team Nomination Form has been submitted.
3. Goal Keepers to have a different coloured top
4. Shin Guards are compulsory.
5. No jewellery is to be worn.
6. Matches start on time, even if teams are not ready.
7. Four points to be allocated for a win and two for a draw.
8. Boys and Girls each have two Semi-Finals and one Grand-Final. If the scores are level at the end of the Semi-Final or Grand Final, an extra 3 minutes each way to be played with the 'golden goal' rule applying. If still tied, five penalties will be taken using a different player for each kick. The procedure will be repeated until a result is obtained.
9. All players must follow the referee's instructions and decisions throughout the game.
10. Abusive language/behavior to the referee or any player will not be tolerated, play will be stopped by the referee.

Results:

- All teams will be given scoresheets when they submit their Team Nomination Form.
- Scoresheets to be completed, counter-signed by opposition coach and submitted to the Results Desk as soon as possible after each match.

Member Schools will be invoiced per team fee upon receipt of the entry form.

APPENDIX I – HALL OF FAME

Schools are invited to inform the EISM Office of current or past students for inclusion in the EISM Hall of Fame.

There are four criteria that will be considered for inclusion in to the EISM Hall of Fame:

1. The sport needs to be currently being played at EISM level. Hall of Fame inductees in sports that are no longer offered at EISM level will remain in the Hall of Fame, but no new inductees will be accepted whilst the sport is not an EISM sport.
2. National Representation as a Competitor (Senior or Junior level). The inductee must have competed for a country, against another country, in international play, ie camps etc will not qualify for nomination.
3. A Premiership player at the peak level. The 'peak level' is defined as a National League level competition in that sport. Where a sport does not have a peak level of competition, the overriding criteria as above are the only criteria used to consider Hall of Fame inductions for that sport
4. Sport specific criteria apply to some sports, and are the selected events/qualifications as noted per Sport through this document.

PLEASE NOTE:

- Where there are no sport specific criteria listed under a sport, that sport is covered in the overriding criteria at the beginning of this document
- The following sports are also currently played at EISM level;
 - Indoor Soccer/5-A-Side Soccer
 - Badminton
 - Indoor Cricket
 - Swimming
- Students participating in these sports are eligible for nomination for the EISM Hall of Fame under the overriding criteria listed at the top of the page
- Multi-class athletes will be considered for nomination under the criteria listed for their relevant sport
- At the beginning of Term 4, the EISM office will contact member schools to call for nominations for new inductees in to the EISM Hall of Fame. Nominations can also be made throughout the year via the Head of Sport Portal on the EISM Website. Nominations will be assessed against the criteria listed above, and new inductees announced at the End of Year Heads of Sport Function.

APPENDIX I – HALL OF FAME cont'd

ATHLETICS & CROSS COUNTRY

Winner of Stawell Gift or Zatopek 10,000.

(Note: Any event that is featured at an Athletics Competition at an international event is to be included, even if not run at an EISM Carnival e.g. Pole Vault)

NAME	ACHIEVEMENT	YEAR	SCHOOL
Damian Cook	Aust & Vic Rep. Marathon	1971	Whitefriars
Jan Meres	State Athletics Rep 100m, 200m, 4x100m	1983-86,88-89	Huntingtower
James McEniry	Vic Rep. 800m	1989	Mazenod
Evelyn Bucher	National Under Age Triple Jump Champ	1990-92	Plenty Valley
Paul Patrick	1 st Zatopek 10,000m Commonwealth Games 10,000m	1993 1994	Aquinas
Paul Cleary	Olympic Games 1500m	1996	Aquinas
Daniel Nash	Aust Rep. High Jump	1997	Plenty Valley
Dominic McGrath	Commonwealth Games 50km walk	1998	Salesian
Kane Wille	Australian Athletics Representative,	2008-09	St Joseph's
Kyle Swan	IAAF World Youth Championships 10,000m	2015	Knox
Gary Haasbroek	U18-U20 Aust & Vic Champion, Aust Rep. Decathlon	2016-18	Tintern
Paul Haasbroek	U15-U20 Aust & Vic Champion, Decathlon	2017-20	Tintern/Aquinas
Shannon Fraser	U18 Oceania Games 2 nd Heptathlon	2019	Aquinas
Zac Nunis	U18 Vic Rep. Long Jump, Triple Jump	2020	Aquinas
Kyle Nicolussi	U18 Vic Rep. 100m, 4 x 100m Relay	2020	Aquinas
Shannon Fraser	U18 Aust & Vic Rep. Heptathlon	2020	Aquinas
Anthony Jordan	Commonwealth Games T47 100m	2022	Aquinas
Harrison Kerr	Stawell Gift Winner	2022	Aquinas
Anthony Jordan	Commonwealth Games, 100m T47	2022	Aquinas
Tom Coghlan	Gold Medal Oceania Athletics Championships,	2022	Luther
Felix Hattwich	Gold Medal Oceania Athletics Championships,	2024	Luther
Sophie Stokes	Stawell Gift 800m winner & Stawell Gift 400m winner	2021, 2025	Aquinas

BASKETBALL

Played 50 games in NBL or 30 games in WNBL.

David Stiff	Hobart Devils, Adelaide 36ers, Melb Tigers, Sydney Kings, North Melb Giants, 6 NBL Championships	1992-08	St. Joseph's
Damien Keogh	Aust Rep 207 games – Olympics, 400+ NBL games - Sydney Kings	1980-94, 1984,88,92	Whitefriars
Simon Dwight	Cannons/Razorbacks – 314 games	1992-05	Mazenod
Gerard Leonard	NBL Premiership player, Melb.Tigers	2005-06	St Josephs
Marko Nikolic	Vic Rep (Vic Metro) U/18, U20	2001-03	OGOC
Shanea Greaves	WNBL – Melbourne Boomers, Sydney Flames	2014-	Knox
Daniel Kickert	Melb United, Brisbane Bullets, Sydney Kings, Aust Rep	2014-19	Aquinas
Kiera Rowe	WNBL – Sydney Flames, Rep Aus U17 and U19, FIBA World Champs	2018-24	Luther
Owen Foxwell	NBL - South East Melbourne Phoenix	2021-	Aquinas

APPENDIX I – HALL OF FAME cont'd

CRICKET			
30 Sheffield Shield, Big Bash or One Day games (combined) for a state			
NAME	ACHIEVEMENT	YEAR	SCHOOL
John Leehane	Richmond, 111 District games, District premiers 1976/77. 11 1 st class games	1972-82	Salesian
Brendan Ricci	Ringwood/University. 250 District games 4 1 st class games	1982-99	Whitefriars
Michael Klinger	Captain of Australia U19's Victoria, Sth Aust, WA, Gloucestershire 175 1 st class games, 166 District games	1998-19	Mt Scopus
Darren Dempsey	Ringwood/Nth Melb/Dandenong, 266 games 3 1 st class games for Sth Aust	1994-13	Aquinas
David King	U19 ICC World Cup in Malaysia	2006	Mt Lilydale
Sean Flynn	Premiership Captain–Ringwood, 244 games	1989-09	Aquinas
Jackson Waters	Victorian U19 Cricket Team	2015	Knox
Scott Edwards	Netherlands ODI & T20 teams	2017	Emmaus
Tess Flintoff	Melbourne Stars, Vic Captain U15 & U18	2017-19	Emmaus
Samara Dulvin	Aus Rep Under 19 Women's team in Tri Series Competition	2024	Emmuas
FOOTBALL			
50 AFL/VFL games as Player or Umpire. 20 AFLW games. AFL/VFL Club Best and Fairest. Brownlow Medallist.			
NAME	ACHIEVEMENT	YEAR	SCHOOL
John Murphy	Fitzroy/Sth Melb/Nth Melb, 246 games Club B&F 5 times (Fitz), Vic Rep 9 times	1967-80	Whitefriars
Paul Van der Haar	Essendon, 201 games 278 goals, Vic Representative.	1977-90	Whitefriars
Silvio Foschini	Sth Melb/St Kilda, 107 games 166 goals	1981-88	Mazenod
Bradley Gotch	Fitzroy/St Kilda, 96 games 122 goals	1982-90	Whitefriars
Peter Banfield	Essendon/Brisbane, 56 games 19 goals	1984-89	Aquinas
John Blakey	Fitzroy/Nth Melb, 359 games, Vic Rep	1985-02	Whitefriars
Mark Bunn	Fitzroy/Hawthorn, 53 games	1990-95	Whitefriars
Kristian Bardsley	St.Kilda & Nth. Melb, 58 games	1992-98	St .Joseph's
Kris Barlow	Hawthorn, 102 games	1999-04	St. Joseph's
Darren Crocker	Nth.Melb, 165 games, Premiership Player	1985-98	St. Joseph's
Damian Hardwick	Essendon & Pt.Adelaide, 207 games Dual Premiership player	1994-04	St. Joseph's
John Holt	Nth.Melb, 71 games	1981-88	St. Joseph's
Matthew Larkin	Nth.Melb, 172 games, Captain, State Rep. Best & Fairest 3 times ,Premiership player	1984-93	St. Joseph's
Stephen Patterson	Collingwood, 96 games	1995-00	Huntingtower
Sam Mitchell	Hawthorn/WCE, 307 games, 5 times B&F, Premiership Captain, 4 time premiership player, 2012 Brownlow medal, 3 time All Australian	2002-17	Lilydale Adventist
Nick Malceski	Sydney/Gold Coast, 210 games, Premiership player	2005-16	Aquinas
Damian Cupido	Brisbane/Essendon 53 games	2000-05	Aquinas
Matthew Lobbe	Port Adelaide, 92 games	2010-16	St Josephs

APPENDIX I – HALL OF FAME cont'd

FOOTBALL cont'd

50 AFL/VFL games as Player or Umpire. 20 AFLW games. AFL/VFL Club Best and Fairest. Brownlow Medallist.

NAME	ACHIEVEMENT	YEAR	SCHOOL
Liam Shiels	Hawthorn 255 games, 3 Premierships North Melbourne 33 games	2009-2024	Aquinas
Cameron O'Shea	Port Adelaide, 81 games	2011-16	St Josephs
Katherine Smith	Melbourne/GWS	2017-	Kingswood
Jasmine Grierson	Melbourne/North Melb	2017-	Aquinas
Harry Sheezel	North Melbourne	2023-	Mount Scopus
Tom Boyd	Western Bulldogs/GWS, 61 games, Premiership Player	2014-19	Luther
Dan McStay	Brisbane/Collingwood	2014-	Luther
Tara Bohanna	Gold Coast, 41 games, appointed captain 2022	2022-	Emmaus
Meghan McDonald	Geelong Best and Fairest Winner, Current player	2017-	Tintern
Sam Switkowski	Fremantle, 105 games	2018-	Eltham

GOLF

Winning a tournament on the PGA or LPGA Tour

NAME	ACHIEVEMENT	YEAR	SCHOOL
David Graham	20 wins on PGA Tour, 2 times Major winner	1962-04	Kingswood
John Beveridge	Vic Amateur team	1990-2, 99	Salesian
Aaron Baddeley	8 wins on PGA Tour, (Twice Aust Open)	2001-	Luther
Luke Bleumink	Victorian Colts Squad	2010	Oxley

HOCKEY

50 Australian Hockey League games

NAME	ACHIEVEMENT	YEAR	SCHOOL
Emily Paton	Victorian U18-U21 Hockey Team Victorian Vipers State Hockey Team	2005-07 2010-12	Huntingtower
Hayley Padgett	Victorian U18-U21 Hockey Team Victorian Seniors (Vipers) Hockey Team Australian U21 (Jillaroos) Hockey Team Australian Hockeyroos	2008-12 2011-19 2010-13 2018-19	Plenty Valley

INDOOR CRICKET

NAME	ACHIEVEMENT	YEAR	SCHOOL
Madeleine Wright	2022 World Cup Team and Australian U22 Team	2022	Tintern

NETBALL

NAME	ACHIEVEMENT	YEAR	SCHOOL
Mary Livesey	Aust Rep U17's	2008	Aquinas
Micaela Wilson	Vic Rep U17's	2008	Emmaus
Ben Bingley	Aus Rep Men's Netball		Luther
Hannah Mundy	Melbourne Vixens	2021-	Kingswood

SOFTBALL

NAME	ACHIEVEMENT	YEAR	SCHOOL
Elyssa Wright	Victorian U19 Softball Team	2009	Huntingtower
Milli Mercuri	Victorian U19 Softball Team	2017	Kilvington
Hannah Bahn	Victorian U19 Softball Team	2017	Kilvington

APPENDIX I – HALL OF FAME cont'd

SOCCER			
50 A-League (or equivalent) men's or women's games as a Player.			
NAME	ACHIEVEMENT	YEAR	SCHOOL
Michael McLellan	Aust Youth team	1985-87	Salesian
Damian Mori	596 NSL games, 5 time Premiership player. 45 games for Australia & 13 games for U23	1989-11	St Leos
Steve Panopoulos	Heidelberg/Sth Melbourne, 243 games	1993-03	Salesian
Di Iorio	Aust Youth team	1997	Mazenod
Apostolos Giannou	Australian Joeys U/17, 8 games, Greece U19-21 20 games, Greece 1 game Australian Soccerroos, 5 games,	2006 2008-15 2016-	OGOC
Jackson Irvine	Scotland U19, 3 games Australian U20/23, 20 games Australian Soccerroos, 7 games	2011-12 2012-15 2013-	Knox
Alexandra Natoli	Australian U13 girls. AFC Championships, Vietnam 2011, Australian U16/17 AFC Championships. Adelaide United 10 games 2012-13 season, Melbourne Victory 29 games 2013-17.	2011-17	Aquinas
Jonty Benfield	Australia U17 National Team	2024	Tintern
TABLE TENNIS			
NAME	ACHIEVEMENT	YEAR	SCHOOL
Michael Belot	Vic Rep.	1997	Whitefriars
Stephen Knapp	Vic Rep. Aust Rep.	1979	Whitefriars
Rebecca Julian	Beijing Paralympic Games, ITTF World Championships	2008	Oxley
David Powell	Olympics, Comm Games	2016, 2018	Aquinas
TENNIS			
Attaining ATP Ranking of 200 or better in Singles or Doubles.			
NAME	ACHIEVEMENT	YEAR	SCHOOL
Pat Cash	Davis Cup Rep, Wimbledon Champ Highest ranking – 4	1983-90, 1987	Whitefriars
Andrew Florent	Highest ATP ranking –13 (doubles)	1996	Mazenod
TOUCH FOOTBALL			
NAME	ACHIEVEMENT	YEAR	SCHOOL
Jai Malchiorre	Vic Rep.	2020	Aquinas
ULTIMATE FRISBEE			
NAME	ACHIEVEMENT	YEAR	SCHOOL
Wesley Allen	National Rep World Junior Ultimate Championships	2024	Donvale
Alice McCormick	National Rep World Junior Ultimate Championships	2024	Mount Lilydale
Louisa Inglese	National Rep World Junior Ultimate Championships	2024	Mount Lilydale
Olivia Gardeniers	National Rep World Junior Ultimate Championships	2024	Mount Lilydale
VOLLEYBALL			
John Miller	Vic Rep		Mazenod
Merikia Brown	Vic U19 Volleyball Team	1994	Huntingtower
Paul Sanderson	Australian Mens Team Volleyroos	2014	Billanook

APPENDIX II – SCORESHEETS

Scoresheets must be completed by the home and away team.

In the case of score disputes, only signed scoresheets will be taken into consideration.

Scoresheets must be made available to EISM upon request.

Scoresheets can be photocopied from the Handbook, downloaded from the EISM website, or a PDF copy can be made available to Heads of Sport upon request.

EISM Badminton - Scoresheet



Stream:	1	2	Grade:	A	B	Yr:	Gender:	Boys	Girls	Date:	Home:	Away:
---------	---	---	--------	---	---	-----	---------	------	-------	-------	-------	-------

Singles: Best of 3 games up to 15 – Rally Point

	Player Name	Game 1		Game 2		Game 3		Game Score	
		SETS	GAMES	SETS	GAMES	SETS	GAMES	SETS	GAMES
1		-		-		-		-	
2		-		-		-		-	
3		-		-		-		-	
4		-		-		-		-	
5		-		-		-		-	
6		-		-		-		-	
7		-		-		-		-	
8		-		-		-		-	
Doubles (1 & 2)		-		-		-		-	
Doubles (3 & 4)		-		-		-		-	
Doubles (5 & 6)		-		-		-		-	
Doubles (7 & 8)		-		-		-		-	

Doubles: Best of 3 games up to 21 – Rally Point

If sets and games are tied, use points to determine winner

Home Team:	SETS	GAMES	POINTS	Away Team:	SETS	GAMES	POINTS

Signed Home:	Signed Away:
---------------------	---------------------

EISM Softball - Scoresheet



Stream:	1	2	Grade:	A	B	Yr:		Gender:	Boys	Girls	Date:	
Home Team:						Away Team:						

Pos	Name		1	2	3	4	5	6	7	8	9
		1	○	○	○	○	○	○	○	○	○
		2	○	○	○	○	○	○	○	○	○
		3	○	○	○	○	○	○	○	○	○
		4	○	○	○	○	○	○	○	○	○
		5	○	○	○	○	○	○	○	○	○
		6	○	○	○	○	○	○	○	○	○
		7	○	○	○	○	○	○	○	○	○
		8	○	○	○	○	○	○	○	○	○
		9	○	○	○	○	○	○	○	○	○
			/	/	/	/	/	/	/	/	/

Progressive Scoring	1 st	2 nd	3 rd	4 th	5 th	Total
1 st Team Batting						
2 nd Team Batting						

Agreed Finish Time:	
----------------------------	--

Home Team:		Away Team:	
Signed Home:		Signed Away:	

EISM Table Tennis - Scoresheet



Stream:	1	2	Grade:	A	B	Yr:	Gender:	Boys	Girls	Date:	Home:	Away:
---------	---	---	--------	---	---	-----	---------	------	-------	-------	-------	-------

Player Name	Game 1		Game 2		Game 3		Game 4		Game 5		Games		Sets	
	H	A	H	A	H	A	H	A	H	A	H	A	H	A
1	-	-	-	-	-	-	-	-	-	-	-	-	-	-
2	-	-	-	-	-	-	-	-	-	-	-	-	-	-
3	-	-	-	-	-	-	-	-	-	-	-	-	-	-
4	-	-	-	-	-	-	-	-	-	-	-	-	-	-
5	-	-	-	-	-	-	-	-	-	-	-	-	-	-
6	-	-	-	-	-	-	-	-	-	-	-	-	-	-
Doubles (1 & 2)	-	-	-	-	-	-	-	-	-	-	-	-	-	-
Doubles (3 & 4)	-	-	-	-	-	-	-	-	-	-	-	-	-	-
Doubles (5 & 6)	-	-	-	-	-	-	-	-	-	-	-	-	-	-
Doubles (1 & 4) (opt.)	-	-	-	-	-	-	-	-	-	-	-	-	-	-
Doubles (2 & 5) (opt.)	-	-	-	-	-	-	-	-	-	-	-	-	-	-
Doubles (3 & 6) (opt.)	-	-	-	-	-	-	-	-	-	-	-	-	-	-

If sets and games are tied, use points to determine winner (write points in place of games)

Home Team:	GAMES	SETS	Away Team:	GAMES	SETS
Signed Home:			Signed Away:		

EISM Tennis (Central) - Scoresheet



Stream:	1	2	Grade:	A	B	Yr:		Gender:	Boys	Girls	Date:	
Home Team:						Away Team:						

	Player Name	Score	
1			-
2			-
3			-
4			-
Doubles (1 & 2)			-
Doubles (3 & 4)			-
Doubles.(7. TM .0).(opt;j)			-
Doubles.(8. TM .9).(opt;j)			-

Agreed Finish Time:	
----------------------------	--

	GAMES	SETS		GAMES	SETS
Home Team:			Away Team:		
Signed Home:			Signed Away:		

EISM Tennis (Eastern) - Scoresheet



Stream:	1	2	Grade:	A	B	Yr:		Gender:	Boys	Girls	Date:	
Home Team:						Away Team:						

	Player Name	Score	
1		-	
2		-	
3		-	
4		-	
5		-	
6		-	
Doubles (1 & 2)		-	
Doubles (3 & 4)		-	
Doubles (5 & 6)		-	
Doubles.(7. [™] .0).(optj)		-	
Doubles.(8. [™] .1).(optj)		-	
Doubles.(9. [™] .2).(optj)		-	

Agreed Finish Time:	
----------------------------	--

Home Team:	GAMES	SETS	Away Team:	GAMES	SETS
Signed Home:			Signed Away:		

EISM Touch Football - Scoresheet



Stream:	1	2	Grade:	A	B	Yr:		Gender:	Boys	Girls	Date:	
----------------	---	---	---------------	---	---	------------	--	----------------	------	-------	--------------	--

TEAMS	FIRST HALF (TALLY)	SECOND HALF (TALLY)	TOTAL SCORE
Home Team			
Away Team			

TEAM LIST (optional)					
HOME TEAM			AWAY TEAM		
No.	Player Name	Try Scored	No.	Player Name	Try Scored
		1			1
		2			2
		3			3
		4			4
		5			5
		6			6
		7			7
		8			8
		9			9
		10			10
		11			11
		12			12
		13			13
		14			14
		15			15
		16			16
		17			17
		18			18

Home Team:		Away Team:	
Signed Home:		Signed Away:	

EISM Ultimate Frisbee - Scoresheet



Stream:	1	2	Grade:	A	B	Yr:		Gender:	Boys	Girls	Date:	
----------------	---	---	---------------	---	---	------------	--	----------------	------	-------	--------------	--

TEAMS	FIRST HALF (TALLY)	SECOND HALF (TALLY)	TOTAL SCORE
Home Team			
Away Team			

TEAM LIST (optional)					
HOME TEAM			AWAY TEAM		
No.	Player Name	Goal Scored	No.	Player Name	Goal Scored
		1			1
		2			2
		3			3
		4			4
		5			5
		6			6
		7			7
		8			8
		9			9
		10			10
		11			11
		12			12
		13			13
		14			14
		15			15
		16			16
		17			17
		18			18

Home Team:		Away Team:	
Signed Home:		Signed Away:	

EISM Volleyball - Scoresheet



Stream:	1	2	Grade:	A	B	Yr:	Gender:	Boys	Girls	Date:	Home:	Away:
---------	---	---	--------	---	---	-----	---------	------	-------	-------	-------	-------

Set 1													Result						
Home:	1	2	3	4	5	6	7	8	9	10	11	12	13	14	15	16	17	18	
Away:	1	2	3	4	5	6	7	8	9	10	11	12	13	14	15	16	17	18	

Set 2													Result						
Home:	1	2	3	4	5	6	7	8	9	10	11	12	13	14	15	16	17	18	
Away:	1	2	3	4	5	6	7	8	9	10	11	12	13	14	15	16	17	18	

Set 3													Result						
Home:	1	2	3	4	5	6	7	8	9	10	11	12	13	14	15	16	17	18	
Away:	1	2	3	4	5	6	7	8	9	10	11	12	13	14	15	16	17	18	

Set 4													Result						
Home:	1	2	3	4	5	6	7	8	9	10	11	12	13	14	15	16	17	18	
Away:	1	2	3	4	5	6	7	8	9	10	11	12	13	14	15	16	17	18	

Set 5													Result						
Home:	1	2	3	4	5	6	7	8	9	10	11	12	13	14	15	16	17	18	
Away:	1	2	3	4	5	6	7	8	9	10	11	12	13	14	15	16	17	18	

Home Team:	SETS	POINTS	Away Team:	SETS	POINTS
Signed Home:			Signed Away:		

APPENDIX III – EISM HOME TEAM MATCH DAY CHECKLIST

The checklist below covers all aspects of student safety and minimum venue requirements for EISM sporting fixtures. It is the responsibility of the HOME team to ensure that these minimum standards are met for each EISM match. Please sign after completing checklist and ensure the opposing team also reviews the checklist and signs. Thank-you.

HOME SCHOOL: _____ OPPOSING SCHOOL: _____
NAME: _____ NAME: _____
SIGNED: _____ SIGNED: _____
DATE: ___ / ___ / ___ SPORT: _____ YEAR LVL: _____

VENUE: _____

Category A Requirements (These need to be in place before a match is permitted to start)

Category B Requirements (These need to be addressed during the course of play)

EISM Executive Officer to be advised of any issue resulting in no match being played

AMMENITIES

- | | |
|---|--|
| <input type="checkbox"/> (A) Evacuation points accessible | <input type="checkbox"/> (B) Running water available |
| <input type="checkbox"/> (B) Toilets open | |

FIELD OF PLAY

- | | |
|--|--|
| <input type="checkbox"/> (A) Marked correctly | <input type="checkbox"/> (A) Free of debris, rubbish & obstacles |
| <input type="checkbox"/> (A) No surface hazards (sprinkler heads, etc) | <input type="checkbox"/> (A) Perimeter fencing safe – signage, etc |
| <input type="checkbox"/> (A) Weather conditions safe for play | <input type="checkbox"/> (A) Goal post padding in place |

SAFETY EQUIPMENT

- | | |
|---|--|
| <input type="checkbox"/> (A) First aid kit (* see content list) | <input type="checkbox"/> (A) Ice / heat pack |
|---|--|

SUPERVISION

- | | |
|--|--|
| <input type="checkbox"/> (A) Mobile phone | <input type="checkbox"/> (A) Staffing levels adequate for activity |
| <input type="checkbox"/> (A) Medical & contact information | <input type="checkbox"/> (B) Adequate supervision of spectators |

DETAILS OF ANY ISSUE NOTED (include actions to rectify)

A first aid kit needs to include:

- | | | |
|---|--|---|
| <ul style="list-style-type: none">• basic first aid notes• disposable gloves• resuscitation mask• individually wrapped sterile adhesive dressings• sterile eye pads (packet)• sterile coverings for serious wounds | <ul style="list-style-type: none">• triangular bandages• safety pins• small sterile unmedicated wound dressings• medium sterile unmedicated wound dressings• large sterile unmedicated wound dressings | <ul style="list-style-type: none">• non-allergenic tape• rubber thread or crepe bandage• scissors• tweezers• suitable book for recording details of first aid provided• sterile saline solution• plastic bags for disposal. |
|---|--|---|
-

APPENDIX V – MEMBER SCHOOLS

ALPHINGTON GRAMMAR SCHOOL

18 Old Heidelberg Road
Alphington 3078
Phone: 9497 4777

PRINCIPAL: Dr Vivianne Nikou
School Colours:
Black, Royal Blue & White

AQUINAS COLLEGE

46 Great Ryrie Street
Ringwood 3134
Phone: 9259 3000

PRINCIPAL: Mr David Broadbent
School Colours:
Black, Green, Red

BIALIK COLLEGE

429 Auburn Road
Hawthorn 3122
Phone: 9822 7981

PRINCIPAL: Mr Jeremy Stowe-Lindner
School Colours:
Navy Blue & Yellow

BILLANOOK COLLEGE

197 Cardigan Road
Mooroolbark 3138
Phone: 9725 5388

PRINCIPAL: Mr Roger Oates
School Colours:
Navy, Red & White

DONVALE CHRISTIAN COLLEGE

155 Tindals Road
Donvale, 3111
Phone: 9844 2471

PRINCIPAL: Mrs Rebecca Hall
School Colours:
Blue, White & Green

ELTHAM COLLEGE

1660 Main Road
Research 3095
Phone: 9437 1421

PRINCIPAL: Mr Richard Lisle
School Colours:
White, Red & Charcoal

EMMAUS COLLEGE

503 Springvale Road
Vermont South 3133
Phone: 9845 3211

PRINCIPAL: Ms Karen Jebb
School Colours:
Royal Blue & Yellow

HUNTINGTOWER SCHOOL

77 Waimarie Drive
Mt. Waverley 3149
Phone: 9807 8888

PRINCIPAL: Ms Shan Christensen
School Colours:
Light Blue & Navy

KILVINGTON GRAMMAR SCHOOL

2 Leila Road
Ormond 3204
Phone: 9578 6231

PRINCIPAL: Mr Rob French
School Colours:
Blue, Gold & Magenta

THE KING DAVID SCHOOL

517 Orrong Road
Armadale 3143
Phone: 9291 7949

PRINCIPAL: Mr Marc Light
School Colours:
Navy, Gold & White

KINGSWOOD COLLEGE

355 Station Street
Box Hill 3128
Phone: 9896 1700

PRINCIPAL: Ms Chrissy Gamble
School Colours:
Light Blue, Dark Blue, Yellow

APPENDIX V – MEMBER SCHOOLS cont'd

THE KNOX SCHOOL

220 Burwood Highway
Wantirna South 3152
Phone: 8805 3800

PRINCIPAL: Ms Nikki Kirkup
School Colours:
Navy Blue, Gold & Maroon

LUTHER COLLEGE

1-39 Plymouth Road
Croydon Hills 3136
Phone: 9724 2000

PRINCIPAL: Ms Jacqui Layfield
School Colours:
Royal Blue, Red and White

MOUNT LILYDALE MERCY COLLEGE

120 Anderson Street
Lilydale 3140
Phone: 9735 4022

PRINCIPAL: Mr Philip Morison
School Colours:
Royal Blue, White & Gold

MOUNT SCOPUS MEMORIAL COLLEGE

245 Burwood Highway
Burwood 3125
(Access via 87-89 Station Street)
Phone: 9834 0000

PRINCIPAL: Mr Dan Sztrajt
School Colours:
Navy Blue, Light Blue & Gold

NUNAWADING CHRISTIAN COLLEGE

161 Central Road
Nunawading 3131
Phone: 9877 3555

PRINCIPAL: Ms Meggan James
School Colours:
Blue, Maroon & Yellow

OAKLEIGH GRAMMAR

77 – 81 Willesden Road
Oakleigh 3166
Phone: 9569 6128

PRINCIPAL: Mr Mark Robertson
School Colours:
Grey, Maroon and Gold

OXLEY CHRISTIAN COLLEGE

15-49 Old Melbourne Road
Chirnside Park 3116
Phone: 9727 9900

PRINCIPAL: Mr Michael Bond
School Colours:
Red & Blue

PLENTY VALLEY CHRISTIAN COLLEGE

840 Yan Yean Road
Doreen 3754
Phone: 9717 7400

PRINCIPAL: Ms Natasha Mackinnon
School Colours:
Navy & Green

MELBOURNE RUDOLF STEINER SCHOOL

213 Wonga Road
Warranwood 3134
Phone: 9876 2633

School Colours:
Royal Blue & White

TINTERN GRAMMAR

90 Alexandra Rd
Ringwood East 3135
Phone: 9845 7777

PRINCIPAL: Mr Bradley Fry
School Colours:
Navy & White

APPENDIX VI – HEADS OF SPORT

SCHOOL	PHONE	MOBILE	FIRST AID
ALPHINGTON GRAMMAR SCHOOL Olivia Rahme or@ags.vic.edu.au Lara Del Conte lde@ags.vic.edu.au			
AQUINAS COLLEGE Renee Johns (Year 7 & Senior Sport) Erin Richards (Year 8 & Year 9 Sport) sport@aquinas.vic.edu.au			
BIALIK COLLEGE Mick Wheeler wheelm@bialik.vic.edu.au			
BILLANOOK COLLEGE Morgan Gardiner sport@billanook.vic.edu.au			
DONVALE CHRISTIAN COLLEGE Chris Turner christopher.turner@donvale.vic.edu.au Emily Townend emily.townend@donvale.vic.edu.au			
ELTHAM COLLEGE Brent Wallace bwallace@elthamcollege.vic.edu.au			
EMMAUS COLLEGE Eugene Pring eugene.pring@emmaus.vic.edu.au			
HUNTINGTOWER SCHOOL Belinda Baynham bbaynham@huntingtower.vic.edu.au Ben Hardcastle bhardcastle@huntingtower.vic.edu.au			
KILVINGTON GRAMMAR SCHOOL Luke Bahramis bahramisl@kilvington.vic.edu.au			

<p>THE KING DAVID SCHOOL Drew Solewicz drew.solewicz@kds.vic.edu.au Chelsea Dabner chelsea.dabner@kds.vic.edu.au</p>			
<p>KINGSWOOD COLLEGE Ryan Berg berg.r@kingswoodcollege.vic.edu.au Connor Mara mara.c2@kingswoodcollege.vic.edu.au</p>			
<p>THE KNOX SCHOOL Nathan Bower nathan.bower@knox.vic.edu.au Emily Roche emily.roche@knox.vic.edu.au</p>			
<p>LUTHER COLLEGE Doug Willcock dwi@luther.vic.edu.au</p>			
<p>MOUNT LILYDALE MERCY COLLEGE Danni Webb dwebb@mlmc.vic.edu.au</p>			
<p>MOUNT SCOPUS MEMORIAL COLLEGE Rob Scholz (Year 9 & Senior, Carnivals) rscholz@scopus.vic.edu.au Stuart McKenzie (Year 7 & 8) smckenzie@scopus.vic.edu.au Daniel Sherr dsherr@scopus.vic.edu.au</p>			
<p>NUNAWADING CHRISTIAN COLLEGE Daniel Selent daniel.selent@nunawading.vic.edu.au</p>			
<p>OAKLEIGH GRAMMAR Peter Schuwalow pschuwalow@oakleighgrammar.vic.edu.au</p>			
<p>OXLEY CHRISTIAN COLLEGE Frederik Kotze fkotze@oxley.vic.edu.au</p>			

<p>PLENTY VALLEY CHRISTIAN COLLEGE Luke Sexton luke.sexton@pvcc.vic.edu.au</p>			
<p>MELBOURNE RUDOLF STEINER SCHOOL Matt Ogilvie matt.ogilvie@mrss.vic.edu.au</p>			
<p>TINTERN GRAMMAR Ash Viney aviney@tintern.vic.edu.au</p>			

APPENDIX VII – 2026 SCHOOL DIVISIONS

EISM Member School		Weekly Sport	Athletics	Cross Country	Swimming
AGS	Alphington Grammar School	Eastern – North	Division 2	Division 3	Division 3
AQU	Aquinas College	Central	Division 1	Division 1	Division 2
BIA	Bialik College	Eastern - South	Division 3	Division 2	Division 1
BIL	Billanook College	Central	Division 2	Division 3	Division 3
DCC	Donvale Christian College	Central	Division 1	Division 1	Division 1
ELT	Eltham College	Eastern – North	Division 2	Division 2	Division 2
EMM	Emmaus College	Central	Division 1	Division 1	Division 2
HNT	Huntingtower School	Eastern - South	Division 1	Division 1	Division 1
KLV	Kilvington Grammar School	Eastern - South	Division 1	Division 2	Division 1
KDS	The King David School	Eastern - South	Division 3	Division 3	Division 3
KWD	Kingswood College	Eastern - South	Division 2	Division 3	Division 1
KNX	The Knox School	Eastern - South	Division 2	Division 2	Division 3
LUT	Luther College	Central	Division 1	Division 1	Division 1
MTL	Mount Lilydale Mercy College	Central	Division 1	Division 1	Division 2
MTS	Mount Scopus Memorial College	Central	Division 2	Division 2	Division 2
NCC	Nunawading Christian College	Eastern – North	Division 3	Division 3	Division 3
OAK	Oakleigh Grammar	Eastern - South	Division 3	Division 3	Division 3
OXL	Oxley Christian College	Eastern – North	Division 3	Division 2	Division 2
PVC	Plenty Valley Christian College	Eastern – North	Division 3	Division 3	Division 2
RSS	Melbourne Rudolf Steiner School	Eastern – North	Division 3	Division 2	Division 3
TIN	Tintern Grammar	Eastern – North	Division 2	Division 1	Division 1

APPENDIX VIII - CALENDAR 2026

Term 1 2026					
Wk	Monday	Tuesday	Wednesday	Thursday	Friday
	Eastern Yr 7	Central Yr 8	Senior	Year (8)/9	
	26th Jan	27th Jan	28th Jan	29th Jan	30th Jan
1	Australia Day		Pre Season	Pre Season	
	2nd Feb	3rd Feb	4th Feb	5th Feb	6th Feb
2	C HOS @ MTL	Pre Season	Pre Season	Pre Season	E HOS @ KNX
	9th Feb	10th Feb	11th Feb	12th Feb	13th Feb
3		Pre Season	Round 1	Round 1	
	16th Feb	17th Feb	18th Feb	19th Feb	20th Feb
4		Round 1	Round 2	Round 2	
	23rd Feb	24th Feb	25th Feb	26th Feb	27th Feb
5	Pre Season	Round 2	Round 3	Round 3	
	2nd Mar	3rd Mar	4th Mar	5th Mar	6th Mar
6	Pre Season	Round 3	Round 4	Round 4	
	9th Mar	10th Mar	11th Mar	12th Mar	13th Mar
7	Labour Day	Round 4	Round 5	Round 5	Tennis Open Golf Gala Day
	16th Mar	17th Mar	18th Mar	19th Mar	20th Mar
8	Round 1	Round 5	Round 6	Round 6	
	23rd Mar	24th Mar	25th Mar	26th Mar	27th Mar
9	Round 2	Round 6	Round 7	Round 7	
	30th Mar	31st Mar	1st Apr	2nd Apr	3rd Apr
10	Round 3	Round 7	Representative Play Off Round	Catch Up Round	Good Friday
Term 2 2026					
Wk	Monday	Tuesday	Wednesday	Thursday	Friday
	Eastern Yr 7	Central Yr 8	Senior	Year (8)/9	
	20th Apr	21st Apr	22nd Apr	23rd Apr	24th Apr
1	Catch Up Round	Pre Season	Catch Up Round	Catch Up Round	
	27th Apr	28th Apr	29th Apr	30th Apr	1st May
2	Round 4	Pre Season	Semi Finals	Semi Finals	
	4th May	5th May	6th May	7th May	8th May
3	Round 5	Round 1	Grand Finals	Grand Finals	
	11th May	12th May	13th May	14th May	15th May
4	Round 6	Round 2	Pre Season	Pre Season	Div 3 Athletics
	18th May	19th May	20th May	21st May	22nd May
5	Round 7	Round 3	Pre Season	Pre Season	
	25th May	26th May	27th May	28th May	29th May
6	Grand Finals	Round 4	Round 1	Round 1	
	1st June	2nd June	3rd June	4th June	5th June
7	Pre Season	Round 5	Round 2	Round 2	
	8th June	9th June	10th June	11th June	12th June
8	King's Birthday	Round 6	Round 3	Round 3	
	15th June	16th June	17th June	18th June	19th June
9	Pre Season	Round 7	Round 4	Round 4	
	22nd June	23rd June	24th June	25th June	26th June
10	Round 1 (Split)	Pre Season (Split)	Catch Up Round	Catch Up Round	

APPENDIX VIII - CALENDAR 2026 cont'd

Term 3 2026					
Wk	Monday	Tuesday	Wednesday	Thursday	Friday
	Eastern Yr 7	Central Yr 7	Senior	Year (8)/9	
1	13th July	14th July	15th July	16th July	17th July
	Round 1 (Split)	Pre Season (Split)	Catch Up Round	Catch Up Round	
2	20th July	21st July	22nd July	23rd July	24th July
	Round 2	Pre Season	Round 5	Round 5	C - HOS @ EMM
3	27th July	28th July	29th July	30th July	31st July
	Round 3	Round 1	Round 6	Round 6	E - HOS @ OAK
4	3rd Aug	4th Aug	5th Aug	6th Aug	7th Aug
	Round 4	Round 2	Round 7	Round 7	
5	10th Aug	11th Aug	12th Aug	13th Aug	14th Aug
	Round 5	Round 3	Semi Finals	Semi Finals BOARD @ KLV	
6	17th Aug	18th Aug	19th Aug	20th Aug	21st Aug
	Round 6	Round 4	Grand Finals	Grand Finals	
7	24th Aug	25th Aug	26th Aug	27th Aug	28th Aug
	Round 7	Round 5	5-A-Side Gala Day	Pre Season	Chess Gala Day
8	31st Aug	1st Sept	2nd Sept	3rd Sept	4th Sept
	Grand Finals	Round 6		Pre Season BOARD @ ONLINE	
9	7th Sept	8th Sept	9th Sept	10th Sept	11th Sept
	Pre Season	Round 7	Cross Country	Round 1	
10	14th Sept	15th Sept	16th Sept	17th Sept	18th Sept
	Pre Season	Pre Season		Round 2	

Term 4 2026					
Wk	Monday	Tuesday	Wednesday	Thursday	Friday
	Eastern Yr 7	Central Yr 7	Senior	Year (8)/9	
1	5th Oct	6th Oct	7th Oct	8th Oct	9th Oct
	Round 1	Pre Season		Round 3	
2	12th Oct	13th Oct	14th Oct	15th Oct	16th Oct
	Round 2	Round 1		Round 4 SSAV Athletics EXEC @ ONLINE	
3	19th Oct	20th Oct	21st Oct	22nd Oct	23rd Oct
	Round 3	Round 2		Round 5	C - HOS @ BIL
4	26th Oct	27th Oct	28th Oct	29th Oct	30th Oct
	Round 4	Round 3		Round 6	E - HOS @ BIA
5	2nd Nov	3rd Nov	4th Nov	5th Nov	6th Nov
	Catch Up Round	Cup Day		Round 7	
6	9th Nov	10th Nov	11th Nov	12th Nov	13th Nov
	Round 5	Round 4		Semi Finals BOARD @ KWD	
7	16th Nov	17th Nov	18th Nov	19th Nov	20th Nov
	Round 6	Round 5		Grand Finals	
8	23rd Nov	24th Nov	25th Nov	26th Nov	27th Nov
	Round 7	Round 6			
9	30th Nov	1st Dec	2nd Dec	3rd Dec	4th Dec
	Grand Finals	Round 7		END OF YEAR HOS LUNCH	

APPENDIX IX – MAP OF MEMBER SCHOOLS

